

# Developing Governance Our People

.....

Version 7  
September 2021

**nes** | NORFOLK  
EDUCATIONAL  
SERVICES

 CITY  
COLLEGE  
NORWICH



# Developing Governance The People

## Contents

|                              |   |
|------------------------------|---|
| Norfolk Educational Services | 4 |
| City College Norwich         | 8 |

# Norfolk Educational Services Board



**Glen Webster**  
**Chairman**

**Area Business  
Manager  
Barclays**

Glen is currently the Area Business Manager for Barclays in Norfolk and has over 25 years' experience working in a wide range of roles in financial services, including retail, financial planning and residential, as well as commercial lending.

*"I am proud to be part of an organisation intent on raising educational standards across Norfolk and I am passionate about using my experience and expertise to ensure local SMEs (Small and Medium Enterprises) and educational establishments form ever closer bonds for the benefit of our local communities".*



**Martin Colbourne**  
**Managing Director**

Martin became Managing Director of Norfolk Educational Services Ltd (NES) in May 2016 following two years as Finance Director within the TEN Group. Martin has a background in commercial finance, audit and consultancy across both the public and private sector and he is a qualified chartered accountant by profession. Previous employers are PricewaterhouseCoopers and May Gurney PLC.

NES employs over 250 staff providing vital support service provision for finance, HR, IT, estates, legal, marketing, admissions and exams.



**Ann Donkin**  
**Director**

**Healthcare  
Professional**

Ann has worked in both the private and public health and care sectors for over 30 years, at the Department of Health, regional and local level. This includes working in health and care organisations in Norfolk on three occasions during her career.

*"I have an Executive MBA with Distinction and I am a member through Distinction of the Faculty of Public Health. I live in South Norfolk and am an accredited volunteer for Nelson's Journey, the Charity dedicated to supporting bereaved children and young people throughout Norfolk. I am also a Board Trustee for Norfolk Healthwatch".*



**Patrick Colby**  
**Director**

**Pre-construction  
Manager,  
Morgan Sindall  
Construction &  
Infrastructure**

Patrick Colby is the pre-construction Manager for the Eastern Counties division of Morgan Sindall Construction and Infrastructure. He has twenty years' experience within the construction industry through working at two of the UK's largest contractors on landmark projects across the UK.

*"I was attracted to joining the NES Board because of its approach to challenging the status quo within the education sector and I am keen to contribute to their success, by offering my knowledge and expertise from the construction sector. Being Norfolk born and bred and a former attendee of City College Norwich, I feel very proud in taking my place within this great team".*



**Chris Maw**  
**Director**

**Chartered  
Accountant**

Chris is a Chartered Accountant and was, until 31 December 2019, a senior partner with Pricewaterhouse Coopers.

Chris has an active involvement in the Norfolk business and wider community including being a Trustee of the Forum Trust. He was, for several years, a Governor for City College Norwich.



**Marty Norman**  
**Staff Director**

**Deputy Director  
of Estates &  
Facilities  
NES**

*"I am the Deputy Director of Estates for NES as well as a Trustee for the Inclusive Schools Trust, a multi-academy trust of six primary schools, sitting on the Finance, Audit and Risk Committee. I am a strong leader, people manager and project manager and a member of the Institute of Workplace and Facilities Management. I hold Level 4, Prince2 Practitioner, IOSH and NEBOSH, IEMA Foundation Environment Management qualifications and have a wealth of experience in strategic operational building management and strategic FM, health and safety, risk and budget management. I am also passionate about education and the environment".*





# City College Norwich Corporation Board



**Andrew Barnes**  
**Chair**

**Master**  
**The Great Hospital**

Andrew was a solicitor and the senior partner of Howes Percival, a regional law firm. He was a specialist in litigation cases and dispute resolution and an accredited mediator. In 2017, Andrew was appointed as Master and Chief Executive of The Great Hospital in Norwich.

*"I am passionate about the fundamental role education has in underpinning people's lives and I wanted to see how I might be able to help. My particular aim is to do all I can to make sure that City College Norwich's students develop the skills and have the support they need to enable them to find jobs in their chosen careers, or to start and sustain their own businesses."*





**Corrienne Peasgood**  
**Principal**

Corrienne Peasgood has been Principal of City College Norwich since September 2012. Under her leadership the college has improved its Ofsted rating to 'Good' and there has been a substantial investment in new buildings and facilities, transforming the main campus for its 10,000+ full and part-time students.

Corrienne has further developed the college's focus on embedding entrepreneurial learning throughout the curriculum, supported by extensive links with employers and unique work experience opportunities that prepare its students for the world of work.



**Jill Lanning**  
Vice Chair

*"I have recently retired to Norwich after spending most of my working life in Further Education. This included over a decade working in a college and many years involved in the world of vocational qualifications at a national level. I hope that my experience in vocational education will be useful for the college in the coming years and support its valuable work in Norwich and beyond".*



**Dr Andrea Blanchflower**  
UEA Appointee

**Director Learning & Teaching Service UEA**

Andrea Blanchflower is the Director of the Learning and Teaching Service at the University of East Anglia. Andrea was educated at the University of Nottingham (BSc Agricultural Sciences) and the University of Birmingham, (PhD Biochemistry). She worked for the Science and Engineering Research Council, Swindon, and Oxfordshire County Council before moving to Norwich and UEA in 1991.

*"I volunteered to be a Governor at City College as I have spent most of my career working in the Higher Education sector and believe in the transformational nature of a good education. In joining the College's Corporation Board I would hope to contribute my knowledge and skills to the Board and, in gaining a deeper understanding of the full range of City College's activities, strengthen the relationship between the University and the College".*



**Noel Bartram**  
Governor

*"I am an experienced businessman with a background in finance. I act as a non-executive Director or Chairman in a variety of different businesses. I have been a Governor in a preparatory school in the private sector and more recently a Governor at Paston Sixth Form College in North Walsham, now part of City College Norwich. My particular areas of interest are strategy, governance and risk management".*



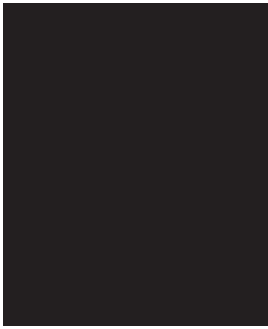
**Bree Sherwood**  
Governor

**Senior Manager Pricewaterhouse Coopers LLP**

Bree is a senior manager at PricewaterhouseCoopers LLP in Norwich, working with a broad range of clients from start up to fully listed businesses, providing audit and advisory services. She is also leads the recruitment of students and experienced professionals into the Norwich office. Bree joined the board in October 2012. She has practical experience of working with a number of audit committees and is the Chairperson of the CCN Audit committee, where she will be able to share her experience of auditing and corporate governance to the benefit of the corporation.

Bree believes passionately in the importance of education in helping young people achieve their full potential and wants to use her skills and experiences to support the college in ensuring that students have all the skills and support they need as they begin their careers.





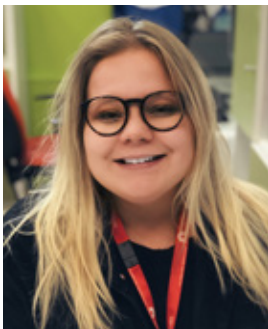
**Staff Governor**



**Nikki Gray**  
**Governor**

Since qualifying as a Chartered Accountant with Ernst & Young, Nikki has held a variety of senior roles across the energy and insurance sectors, not just in Finance but across many business disciplines.

Nikki is passionate about helping others grow and develop and, having now lived in Norwich for 15 years, is also passionate about Norfolk! As a mum of two boys, she has become increasingly interested in understanding how education works in the county and how to bring her broad business experiences to bear. Nikki is also Trustee Treasurer of the Norwich Puppet Theatre.



**Emily Staley**  
**Student Governor**

**Student Union President, CCN**

*"I have been Women's Officer through 2017-18 and have been re-elected for 2018-19. I feel this will help my role as Governor because I know a lot about City College and its background".*



**Jonathan Barnard**  
**Governor**

**Development Director**  
**Anglia Innovation Partnership LLP**

*"I am a Development Director at Norwich Research Park working for Anglia Innovation Partnership LLP, and my role is to bring the parks vision to life. As a Chartered Surveyor I have wide ranging experience of property management and developing with Norwich and in previous roles across the UK. I hope to bring my experience to the benefit of the College and its students".*









For more information  
visit **[www.ccn.ac.uk](http://www.ccn.ac.uk)**

**City College Norwich**  
**Ipswich Road**  
**Norwich NR2 2LJ**

**t: 01603 773 311**

**e: [information@ccn.ac.uk](mailto:information@ccn.ac.uk)**

---

# **Developing Governance**

## **The People**