



# Start your journey

2024/25

City College Norwich Prospectus



# Get the latest on our courses

You will find dates and details for all  
our events on our website.

Visit: [ccn.ac.uk/events](https://ccn.ac.uk/events)

## Open days

We hold open days each term when you can come along to our campus and see our fantastic facilities, meet our expert teaching staff and get answers to all of your questions.

## Live Chat

Ask anything you like about studying at City College Norwich. Live chat is available via our website and we have course advisers available for you.

## Course information evenings

Another chance to get a one-to-one conversation with our teachers and advisers so that you find out more about our courses, get some detailed careers advice and much more.

## Website

Our website has lots of information from detailed course content to financial help. All your practical questions – from travelling to College to where you can eat on campus – are answered too. A virtual tour of the campus is available to give you a sense of City College Norwich life.

Follow us on social media to keep up-to-date with what our current students are doing and what's happening around campus.



@norwichcollege



@citycollegenorwich



citycollegenorwich





# Contents

## Our College

Three Colleges	6
About us	8
Welcome	10
Your student life	12
Ways of Working	14
Study options	16
Maths & English skills	18

## Support, Advice & Careers

Travelling to College	100
Progression & careers after College	102
Preparing for your future career	104
Supporting your studies	106
Industry & work placements	108
Solid support whatever your needs	110
Campus map	112

## What's Next?

Apprenticeships	92
Degrees & Higher Education	96
Art Foundation & Pre-Degrees	98

## More Choice

Easton College courses	114
Paston College courses	116
Leisure Learning	118
Professional Development	119
How to apply	122

## Courses

A Levels	22	Game Design, Game Development, Digital Art & Animation	52
Aspire Academic Progression	24	Hairdressing, Barbering, Beauty Therapy & Make Up Artistry	56
Art, Design, Photography & Fashion	26	Health & Social Care	60
Business, Management & Administration	30	Hospitality & Catering	64
Childcare & Early Years	34	Information Technology & Digital	68
Construction & Building Services	38	Motor Vehicle	72
Creative Media	42	Performing & Production Arts	76
Engineering	46	Science	80
ESOL (English for Speakers of Other Languages for 16-19)	50	Sport & Uniformed Public Services	84
		Travel & Tourism	86
		Inclusive Learning	90

All information is correct at the time of print (August 2023). Visit [ccn.ac.uk](https://ccn.ac.uk) or [easton.ac.uk](https://easton.ac.uk) for the most up to date information.

# Three Colleges

**Our colleges offer the widest range of courses in Norfolk...**



A Levels  
Art, Design & Fashion  
Business, Administration & Customer Service  
Childcare & Early Years  
Construction & Building Services  
Engineering & Motor Vehicle  
English & Humanities  
ESOL  
Hairdressing & Beauty Therapy  
Health & Social Care  
Hospitality & Catering  
Information Technology & Computing  
Media & Games Design  
Performing Arts  
Science & Maths  
Travel & Tourism  
Inclusive Learning

[www.ccn.ac.uk](http://www.ccn.ac.uk)



Agricultural Engineering  
Agriculture  
Animal Studies  
Arboriculture:  
Forestry & Tree Care  
Construction & Building Services  
Environmental Conservation & Countryside Management  
Equine Studies  
Floristry  
Horticulture: Gardening & Landscape Design  
Outdoor Leadership  
Sport  
Uniformed Services  
Inclusive Learning

[www.easton.ac.uk](http://www.easton.ac.uk)



A Levels  
Art & Fashion  
Art History  
Biology  
Business  
Chemistry  
Childcare & Early Years  
English & Humanities  
Environmental Science  
Health & Social Care  
Information Technology & Computing  
Languages  
Law  
Maths  
Media  
Medical Science  
Performing Arts & Production Arts  
Physics  
Sport & Physical Education  
Inclusive Learning

[www.paston.ac.uk](http://www.paston.ac.uk)

**See the course directory at the back of this prospectus for a listing of all courses offered across our three college campuses.**

## ...and superb facilities



### Advanced Construction & Engineering Centre (Norwich)

Fully equipped for teaching the skills needed for a low carbon future, the ACE Centre includes a sustainable transport workshop with electric vehicles and the latest diagnostic equipment, including Haas precision engineering machines, and a construction lab.



### Animal Management Centre (Easton)

Designed to reflect the latest animal management facilities and practices in zoos and aquariums. Students have opportunities to work with endangered aquatic species thanks to our links with Zoological Society London.



### Centre for Excellence in Sport (Easton)

From our tennis centre that is used to host professional tournaments, to the latest equipment for testing elite level performance, our Centre for Excellence is set up to give students a head-start in the sports and leisure industry.



### Digi-Tech Factory (Norwich)

A unique facility that is purpose-built for teaching the latest digital skills, from coding and hardware to advanced manufacturing, animation and games design, media production, construction and engineering design.



### Griffon Theatre (Paston)

Home to our performing arts and drama courses and The Paston Far East Theatre Company, the Griffon Theatre boasts the latest digital sound, lighting and production technology, a cyclorama and movable seating to enable 'in the round' style theatre.



### Health Wing (Norwich)

Key features of a modern hospital ward, lifelike simulators provide healthcare students with opportunities to develop their skills in patient care. The Health Wing also has a 3D anatomy visualisation and virtual dissection table, which is one of very few in the country.

### International Aviation Academy Norwich

A world class training centre located next to Norwich Airport that is designed to train the next generation of aviation professionals. Its Aviation Emulation Zone® includes a Boeing 737 aircraft for students to practise all aspects of aircraft maintenance.



# About us...



**Around 1600**

the number of employers that we work with for work experience



**Over £19m**

invested in student facilities  
(Digi-Tech Building, ACE Centre & our new Construction centre)



**Over 250**

courses to choose from  
- the widest range in Norfolk!



**Students**

Progressing to University and Higher/Degree Apprenticeships every year



**Highest rates**

of achievement for Diplomas of any FE college in Norfolk or Suffolk.



**223**

Norfolk Scholars, for high achievement at Level 3



**Over 1 in 3**

Norfolk students aged 16-18 study across City College Norwich, Paston College & Easton College each year.



**800 +**

employers work with City College Norwich



**130 years**

of educational excellence. City College Norwich was opened in 1891!



Rated  
**'Good'**  
by Ofsted 2021



**Over 90**

Different nationalities among students



**Apprenticeships**

**Largest provider**

of Apprenticeships in Norfolk and Suffolk - over 1,500 in 2018/19





# Welcome

**We're here to work with you as you move towards your chosen future. Together, we'll help you achieve your ambitions, and that journey starts here.**

**We're here to work with you as you move towards your chosen future. Together, we'll help you achieve your ambitions, and that journey starts here.**

This could be going on to study for a degree, getting a job and starting out in your chosen career, securing an Apprenticeship place, or simply growing in confidence and independence.

## Get set for success

Whatever your aims and aspirations, we are here for you! Everything at our College is set up to help you reach your desired destination. We have expert staff who are not only committed teachers but who bring a wealth of industry knowledge into our technical and vocational subject areas.

Your learning will take place in superb professional standard facilities, and our strong links with hundreds of local and national employers ensures outstanding preparation for the world of work – and invaluable opportunities for high quality work experience along the way.

## Gain much more than a qualification

We also understand that you want to enjoy your time at college. Coming to our College is very different to being at school, because

you are treated as an adult and given real independence and responsibility for your learning.

With an active Students' Union, on-site cafés to socialise in, and a range of sporting and other extra-curricular activities on offer, there's lots of opportunities to make new friends and develop your independence.

Whether you want to follow an academic pathway or take one of our technical and vocational courses, including our wide range of T Levels, you will find a course here to suit you. If you are unsure about what course is right for you, come and talk to us. Our experienced and friendly course advisers are here to help.

We hope that you join us and we look forward to seeing you at one of our open events.

**Jerry White**  
Principal



# Your Student Life



@norwichcollege



@citycollegenorwich



citycollegenorwich



**At our College you will find everything you need to have a brilliant student experience as you progress in your learning and career goals.**

**Our Ipswich Road campus has all you need to achieve in your chosen course, unique learning opportunities, extra-curricular activities, and social spaces in which to relax and make new friends.**

## A brilliant student experience

City College Norwich provides an environment in which you will be treated like an adult and you will be given lots of opportunities to grow and develop your skills outside of your studies. Whether you want to be get more deeply involved in the college community through our Students' Union, challenge yourself through regional and national skills competitions, or develop new interests through our clubs and societies you'll be free to follow your passion and express yourself.

experience with the college, by joining our College Crew and helping out at college events such as Open Days.

## A diverse student community

With one in three young people in Norfolk choosing to study with us, we have an incredibly diverse student body. At our college you will meet and study alongside other students with a wide range of interests and from many different backgrounds. We value the diversity of our student body and the inclusive and welcoming ethos we have.

## Opportunities to make your CV stand out

Our courses give you the best possible preparation for your future career by providing you with real experiences of work and regular opportunities to meet and learn from employers. From work placements to employer talks, careers fairs, and visits to workplaces, you will be given lots of opportunities to connect with employers in the sectors you are interested in. We'll even tell you all you need to know about going self-employed. There are also opportunities to gain paid work

## All you need on campus

Our campus is home to some of the best facilities in the region. Our modern, specialist learning facilities, include the impressive Digi-Tech Factory, our Health Wing, Construction Skills Centre, and Advanced Construction and Engineering Centre. You also have access to well-equipped study spaces, student support and advice services (including our Wellbeing Zone), and cafés and outdoor social spaces in which to relax with friends between classes.



@norwichcollege



@citycollegenorwich



citycollegenorwich



# Your Student Life

## Ways of Working

We have high expectations and you will be challenged, but at the same time, you'll be provided with all the support you need to help you succeed.

You will be expected to make a commitment to study in line with our Ways of Working, which students and staff strive to put into practice each day. Our Ways of Working play an important part in making our College a place that is welcoming, open and successful, providing a positive experience for all students and staff.

### We are...



Open &  
Informative



Respectful  
& Fair



Creative  
& Positive



Collaborative  
& Inclusive



Consistent  
& Responsible



Exemplary  
& Tenacious



Aspirational &  
Entrepreneurial



Visit: [easton.ac.uk/students-union](http://easton.ac.uk/students-union)

### Students' Union (SU)

Our NUS-affiliated Students' Union plays a key role in the life of the college. Not only does the SU help to represent the voice and interests of students, it also creates additional opportunities for you to get the most out of your time at college.

Every student at our college automatically gets the benefits of being a member of the SU and the National Union of Students once you have enrolled on your course. Throughout your time at College, the SU is here to make sure that you enjoy your time with us and that your voice is represented.

students  
**union**

Led by students, the SU advocates for students and provides day-to-day support, advice and signposting to sources of help. The SU also provides opportunities for you to represent your peers as a member of the Executive team and at Student Parliament, and it also supports students to create their own clubs and societies.

The SU organises a regular programme of events for students, including Freshers' Fair, activities for awareness weeks, and charity fundraising challenges.



# Study options

No matter what grades you may have when you leave school, we will have the right course to help you get the career you want.

We have lots of study options that will help you progress to where you want to be.

Take a look at our options and find the best route for you.

## Academic Route

Perfect if you're looking for an academic study option that allows you to study a variety of different subjects.

A Level



GCSEs



Pre GCSEs

## Vocational and Technical Route

Hands-on courses that allow you to focus on one subject to develop the practical skills you need for your future career.

Level 3



Level 2



Level 1

Please note that some courses may require additional subjects or evidence of experience.

## Did you know?

Many of our Level 3 vocational technical programmes are valued the same as A Levels by most universities\* and employers

the  
**advice**  
shop

Need help deciding what to apply for?

Our Advice Shop team can help you find the best route for you!  
You can contact them on **01603 773 773** or **information@ccn.ac.uk**

## T Level Route

Two year Level 3 technical programmes that combine classroom study with on-the-job training as part of a substantial industry placement that will last at least 315 hours with an employer.

An excellent alternative to A Levels and Apprenticeships and ideal for those looking to start a career in engineering, construction, digital, business, education & childcare, health or science.

## Apprenticeship Route

Ideal if you want to work while you study to gain the skills, knowledge and experience you need to get in to your chosen career.

Degree  
Apprenticeship  
Level 6



Intermediate  
Apprenticeship  
Level 2

\* If you have a specific course or university in mind, please check their specific entry requirements as this is not the case for some universities and/or subjects.



# Maths & English skills

Maths and English are the most fundamental skills a young person can have not just for work, but for life. In order to help you achieve success now, and in the future, we will ensure you continue to make progress with these skills throughout your programme of study.

Whatever grades you achieved in your GCSEs, your programme of study at City College Norwich will include opportunities for you to develop and enhance your English and Maths skills.

You will be supported to reach your full potential in classes that build on your prior attainment.

Find out how English and Maths will be built in to your studies at City College Norwich.

4

**I've achieved grade 4 and above in GCSE English Language and/or Maths**

You will continue to develop your skills as part of your chosen course(s)

1-3

**I've achieved grade 1-3 in CSE English Language and/or Maths**

You will take GCSE English Language and/or Maths alongside your course(s).

0

**I don't have CSE English Language and/or Maths**

You'll be enrolled on to a GCSE or Functional Skills programme at an appropriate level.

## GCSE English Language

English Language is essential for your current and future plans; both in vocational and academic areas, as well as universities and employment. Being able to communicate effectively and have a confident command of both spoken and written English are highly valued skills in both education and employment.



## GCSE Maths

Maths and numeracy skills are a central part of your programme of study and progression into further education or employment. It isn't just about knowing how to carry out certain calculations, it is about the skills in recognising problems, finding solutions and communicating the explanations.



## Functional Skills English & Functional Skills Maths

English and Maths are essential qualifications that give you a range of skills for life. If you have gaps in your subject knowledge that need further development before progressing to GCSEs, then Functional Skills is a great starting point.

Functional Skills qualifications are available at a range of different levels to support your development and are recognised by colleges and employers, and some universities accept Functional Skills instead of GCSEs.

"I found English at school very challenging, dull and I dreaded every lesson. Thanks to my tutor and her teaching techniques - which must have been honed over years - I now have a real passion for the subject and a far greater respect for writers and the many 'tricks' they employ."



# Courses

.....

## A Levels

Aspire Academic Progression

Art, Design, Photography & Fashion

Business, Management & Administration

Childcare & Early Years

Construction & Building Services

Creative Media

Engineering

English for Speakers of Other Languages

Game Design, Game Development, Digital Art & Animation

Hairdressing, Barbering, Beauty Therapy & Make Up Artistry

Health & Social Care

Hospitality & Catering

Information Technology & Digital

Motor Vehicle

Performing & Production Arts

Science

Sport & Uniformed Public Services

Travel and Tourism

Inclusive Learning

Apprenticeships

Degrees & Higher Education

Art Foundation & Pre-Degrees



**22**  
courses  
on offer

Our Sixth Form  
has close  
affiliations  
with UEA, NUA  
and NEACO

**30**  
courses  
on offer



CITY  
COLLEGE  
NORWICH

# A Levels

## at City College Norwich

**A Level students benefit from specialist careers advice and guidance.**

For more information on the A Level courses available at City College Norwich pick up a copy of our prospectus or visit: [www.ccn.ac.uk/a-levels](http://www.ccn.ac.uk/a-levels)



PASTON  
COLLEGE

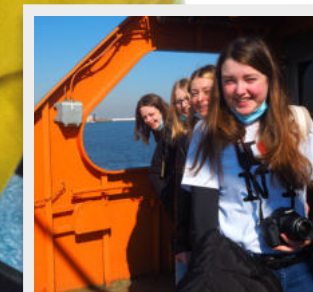
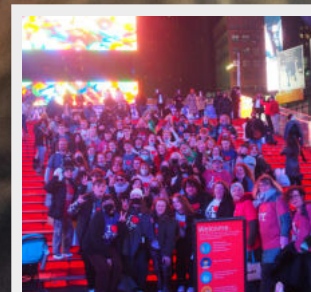
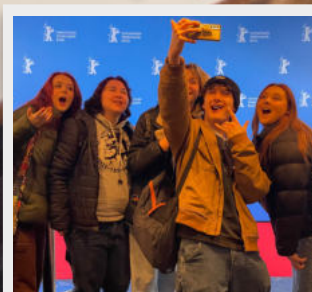
# A Levels

## at Paston College

**Our teachers are A Level specialists in their subjects, fully qualified and very experienced.**

For more information on the A Level courses available at City College Norwich pick up a copy of our prospectus or visit: [www.paston.ac.uk/a-levels](http://www.paston.ac.uk/a-levels)

Joint trips  
abroad to  
New York  
& Berlin





# Aspire Academic Progression

**Academic Progression GCSEs is a full-time programme of study designed for 16-18 year olds who have either finished year 11 without the GCSE results they hoped for, have not taken GCSEs before, or who need additional GCSEs to progress on to the next level of study.**

Insight is the element of Academic Progression which is aimed at students who have specific health needs / barriers to learning, which may have affected attendance and achievement at school. In addition to your main (2 x GCSE) qualifications, there will be a focus on wellbeing support, alongside Enrichment which will enable you to develop some of the skills necessary to become a more efficient and effective student.

## What is it about?

The Academic Progression GCSE programme is specifically designed to support you if you have been home schooled or if your educational journey has been disrupted, leading to lower GCSE results than you have the potential to achieve. Each course will allow you to study GCSEs, develop personal skills and prepare you for your next steps in progression to A Level or Vocational areas.

## What will I do?

These courses have a variety of study options that have been designed to help you progress to your next step.

Students can study a selection of GCSEs, including sciences, mathematics, English or humanities subjects.

You will also take part in a variety of learning activities which will help you develop skills to become a more independent and effective academic student. These activities include trips and visits, and the opportunity to explore your options to choose the next step that's right for you.

## Is it suitable for me?

If you enjoy academic classroom-based learning, intensive study and want to develop academic skills, these courses could be for you.

For most students, getting lower GCSE results than planned does not prevent you from progressing onto a wider variety of vocational and technical courses. However, if there is a specific reason why your GCSE results were not what you had anticipated and you need to gain additional GCSEs to get to the destination of your choice, Academic Progression courses could be right for you.

Our experienced and skilled staff will help you decide the best Academic Progression course options for you during your interview.

## Progression

There are several different progression opportunities for students studying GCSEs. Many students progress to study A Levels, vocational areas, Access to Higher Education courses, apprenticeships, or employment in a variety of different areas.

## Courses

**Academic Progression Full time GCSEs**

**Academic Progression Insight**

## Nadia

Studied:  
**GCSEs**

What next:  
**Studying a Pharmacy Masters Degree at Newcastle University**

"City College Norwich has a very friendly environment which helped me gain my lost confidence. I made friends with amazing people and had all the support I needed which I'm so grateful for."





# Art, Design, Photography & Fashion

Art, Design, Photography and Fashion courses are designed to help you develop your creativity and prepare you for university-level courses, art school or career opportunities in the creative and cultural sector.

Just as practicing creative artists do, our students work collaboratively to develop the multi-disciplinary approach needed for higher levels study and careers in the creative industries. There are multiple opportunities to network with industry professionals to get an insight into the sector and develop your skills as a practitioner.

All courses are accredited by University Arts London and are taught in our £5.7m Creative Arts Building which contains state-of-the-art workshops and studios.

## What will I do?

You will be supported to develop your skills in your chosen specialism by teaching staff who are practicing artists with a wealth of experience and contacts to help you launch your career in the creative industries.

Throughout your course you will adopt a multi-disciplinary and collaborative approach and will be challenged to take risks in order to develop outstanding work.

You will also work on 'live' projects with local and national employers that give you exceptional experience of real work.

## Progression

Our students progress onto some of the most competitive university level creative arts courses in the country at art schools including Central Saint Martins, The Glasgow School of Art, London College of Fashion and Norwich University of the Arts.

The experience of working on 'live' projects with employers, making industry contacts, and development of a professional approach to your practice, means that you will also be extremely well placed for employment, self-employment and Apprenticeship opportunities.

Achieving Distinction on our UAL Level 3 Art & Design Applied General; Extended Diploma courses is worth 168 UCAS points, equivalent to 3 full A Levels at grade A.

## Is it suitable for me?

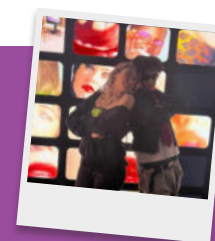
If you like to problem solve, to be challenged and enjoy working collaboratively whilst taking full responsibility for your creative journey, then you could be very well suited to working in the creative arts.

## Exclusive facilities

Students have access to exclusive facilities in our state-of-the-art Creative Arts Building. This includes large collaborative studio spaces with access to materials and resources to allow you to adopt a broad, expansive and experimental approach. Students have full access to our Print/Dye room for mono-printing, silk, disperse dyes, reverse and regular applique, knitting, hand and machine sewing. They also have access to our 3D Workshop for ceramics, 3D modelling and sculpture. We also have a photographic studio and dark room and a professional TV Studio. Students also have access to the full Adobe Suite to support their digital skills development.

## Enrichment opportunities

We offer exciting trips for our students such as our annual Fashion and Photography trip to Florence, and our Art & Design trip to Berlin. Students visit shows locally and nationally to ensure they engage with a diverse range of artists and their work. Students exhibit their work throughout Norwich and Norfolk as well as having work accepted for national exhibitions such as Beyond the Frame (NUA) and Origins Creatives (UAL).



## Alisha

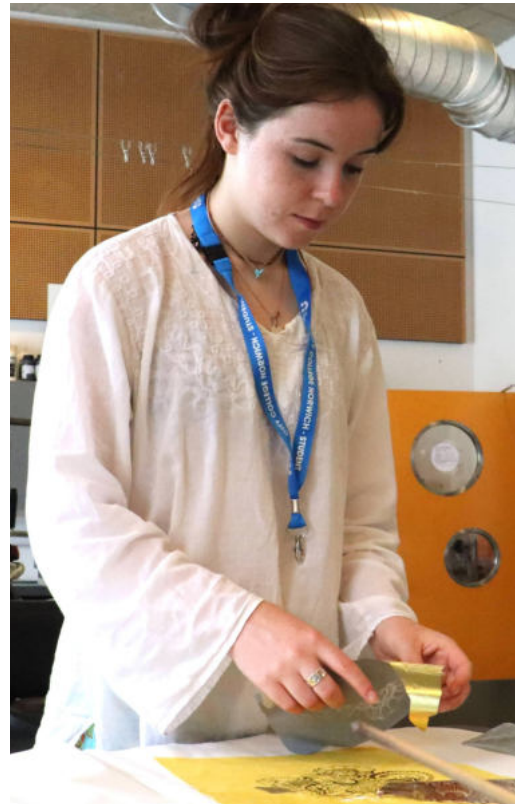
Studied: **Fashion Communications**

What next: **Communication & Styling at De Montfort University**

"My CCN journey was unforgettable. The trips away with the fashion group stand out for me. All of them were amazing, especially Italy! I gained a whole load of confidence, and I can easily say I wouldn't be the person I am now if it wasn't for City College Norwich."







## Employer links

Our students engage with employers and experience life as a freelancer. The course engages with local, national and international artists to ensure that students receive a broad, expansive and diverse course. Students have sessions on creating a professional social media presence, costing, quoting and invoicing; tax and applying for arts funding. Students exhibit and sell their work throughout the year at a range of venues in and around Norwich.

## Real artists

Our Art, Design, Photography and Fashion courses are run by practising artists who are embedded within the Norwich and Norfolk art scene. They are curriculum experts who can design courses that inspire and engage students. They are also practising artists who can provide guidance and mentorship, so students know how to quote for work, creating an engaging social media presence, invoicing and tax.

## Courses we offer

Level	Course	Campus
Level 1	Art & Design	City College Norwich
Level 3	Architecture & 3D Design	City College Norwich
Level 3	Art & Design	City College Norwich
Level 3	Art & Design	Paston College
Level 3	Fashion & Textiles	City College Norwich
Level 3	Fashion Communication	City College Norwich
Level 3	Fine Art	City College Norwich
Level 3	Graphic Design & Illustration	City College Norwich
Level 3	Photography	City College Norwich
Level 4	Foundation Art & Design	City College Norwich
Level 4	Media Learning Company	City College Norwich

## What can I do next?

- Level 1**
  - Art & Design
- Level 2**
  - Art & Design
- Level 3**
  - Architecture & 3D Design
  - Art & Design
  - Fashion & Textiles
  - Fashion Communication
  - Fine Art
  - Graphic Design & Illustration
  - Photography
- Level 3/4**
  - Foundation Art & Design
  - Media Learning Company



## Careers

**Artist**  
Variable

**Art Editor**  
£18-40k per year

**Fashion Designer**  
£20w-80k per year

**Retail Buyer**  
£18-70k per year

**Graphic Designer**  
£20-40k per year

**ual:** university of the arts london

All of our creative arts courses are awarded by University of the Arts London



# Business, Management & Administration

The Business curriculum provides learners with an insight into what a Business is and how they operate. We offer a range of courses to develop business skills including brand new T Level courses which give you the knowledge needed to understand the wide range of business, management and administration activities that shape our daily lives.

Through relevant employment experiences, and the opportunity to specialise in business, administration or management, you can gain a deeper insight into these areas to prepare you for work, an Apprenticeship or university level study.

## What will I do?

All of our business, administration and management courses have been developed with the involvement of local and national employers. This ensures that you not only get a solid grasp of the foundations of business, but you also get a better understanding of how business works in the real world.

You will learn practical employability skills and behaviours that are invaluable in any job or profession whilst also deepening your knowledge in your chosen area of specialism.

Our courses will support you with real work experiences, networking opportunities and aim to develop the behaviours and experiences you will need to succeed and achieve at work or during university level study.

## Progression

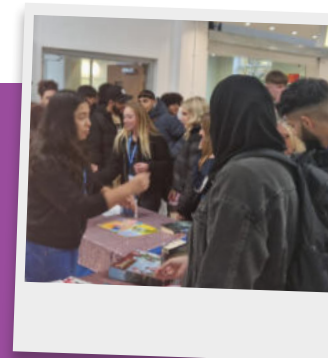
Business and management skills are transferable to almost any sector, making it one of the most flexible career options open to you. Our T Level Transitions programme allows you to progress onto one of our T Level Pathways.

The majority of students who complete the T Level will progress on to university whilst other students go on to a wide range of employment and apprenticeships opportunities.

## Is it suitable for me?

If you want to understand more about how the business world works, enjoy putting what you have learned into practice or want to pursue a career in business, management or the administration sector, then one of our business, management and administration courses could be right for you.

## Enrichment opportunities



### Events and Trips

You will get the opportunity to participate in trips which will link to subjects you will be learning and help gain more knowledge and understanding of the business world. These will boost your confidence help and build a great team.

Level 1 Business students create an event and raise money for a chosen Charity which has become one of our highly successful activities at City College Norwich. T Level Transition students will also take part in creating an event as part of their qualification.

## Jenna

Studied: **Sales & Marketing**

What next:

**Full time work as an Estate Agent**

"Throughout the two-year course, I received so much support from my teachers, which made me more confident in my work. I never wanted to go to university, however after the first year of my course I started to consider doing this in the future because I enjoy business so much. My course has also opened a lot of opportunities for me and so I feel like I have a lot of options after college."



## Experience work & networking

You will acquire a genuine experience of work and networking opportunities with local businesses during your course. Part of the T Level course is to undertake an extended Industry Placement, but both the Level 1 and T Level transitions students will also get a taster of a work placement or work experience within the course.

Guest speakers from local businesses and companies attend college to deliver talks and workshops about real life situations of working in business in areas like management, HR, marketing and finance. They also provide opportunities for students in terms of future career guidance, for example, the Prince's Trust give advice that can help students for the future if they want to run their own businesses.



## Learn with the latest equipment & software

The Business department will be using the latest computer software and will feel like a genuine business board room with new latest equipment, for example touch screen interactive boards and new PCs installed in September 2023.

You will get to learn how to use Microsoft applications to their full potential such as designing professional Power Points for their presentations, creating Excel spreadsheets using project management tools, and MS Project within the transition program and T Level course.

## Courses we offer

Level	Course	Campus
Level 1	Business	City College Norwich
Level 2	T Level Transition Business	City College Norwich
Level 2	T Level Transition Business	Paston College
Level 3 - T Level	T Level: Management & Administration: Team Leadership & Management	City College Norwich
Level 3 - T Level	T Level: Management & Administration: Business Support	City College Norwich
Level 3 - T Level	Management and Administration: Team Leadership and Management	Paston College

## What can I do next?

### Level 1

Business

### Level 2

T Level Transition Business

### T Level

T Level: Management & Administration: Team Leadership & Management

T Level: Management & Administration: Business Support

### Apprenticeship

Customer Service Practitioner Level 2

Business Administrator Level 3

Accounts & Finance Assistant Level 2

Assistant Accountant Level 3

Digital Marketer Level 3

Insurance Practitioner Level 3

Team Leader & Supervisor Level 3

### Degrees

BA (Hons) Leadership & Management

### Higher courses

Chartered Manager Degree Apprenticeship

CM Level 5 Operations/ Departmental Manager Higher Apprenticeship

CM Level 5 Operations/ Departmental Manager

CIPD Associate Diploma in People Management Level 5

Professional Accounting / Taxation Technician Apprenticeship Level 4



## Careers

### Chief executive (CEO)

£55k-£150k per year

### Estate Agent

£15k-£40k per year

### Management Accountant

£25k-£100k per year

### Retail Sales Assistants

£13k-£26k per year



# Childcare & Early Years

If you're looking to start a career in an exciting and rewarding profession that allows you to make a real difference to children in your care, these courses could be for you. Start your journey towards a direct pathway into a career within the industry, such as an Early Years' Educator or a Teaching Assistant or alternatively, onto apprenticeships and university.

Whether you want to work in a children's centre, nursery school, in a primary or secondary school or as registered childminder, our courses are designed to give you the knowledge and practical skills required to pursue a career in one of these invaluable vocations.

## What will I do?

Throughout the course you will have opportunities to work in a childcare, primary, secondary or early years setting in order to enhance your practical skills by putting into practice the knowledge you've gained in the classroom.

You will be taught in a unique learning environment by highly skilled staff who are experts in childcare and early years education.

Alongside this, you will also participate in promotional campaigns and charity events to raise awareness for the industry and have opportunities to attend subject specific trips and visits including the London Museum of Childhood and the Nurse World exhibition.

## Progression

Our courses will provide you with core knowledge and practical skills that will allow you to progress on to a variety of exciting destinations after completing your qualification.

These could include the next level of college based study, university level study, an Apprenticeship or employment. Job opportunities can be found in pre-schools, day nurseries, primary and secondary schools or specialist areas such as play therapy.

## Is it suitable for me?

These courses are suitable for you if you are practical, creative, flexible, compassionate, resilient, adaptive and enjoy working with children and young people.



## Enrichment opportunities

### Experience the working world

Through the college's links to the profession, all childcare and early years students will complete relevant industry work placements two days per week.

## Facilities

Modern classrooms and interactive resources to support the learning of early years education.

## Sophie

Studied:  
Early Years Education  
& Childcare Level 3

What next:  
Early Years Practitioner in a reception class or nursery.

"I chose to do this course to help me reach my goal of a Level 3 qualification in Early Years so I can become an Early Years Practitioner. I've really enjoyed getting first hand experience through the placements I've been in as part of the course. Getting involved in an early years setting weekly has given me realistic experiences and it's helped deepen my knowledge and skills practically as well as prepare me for what a job in early years actually entails. The teaching is adapted to our unique learning styles so we learn in ways that benefit us most. We learn practical tasks such as how to complete support plans and risk assessments."

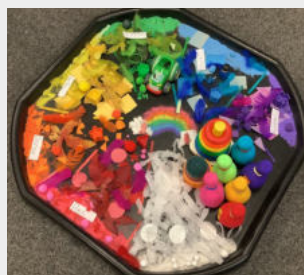
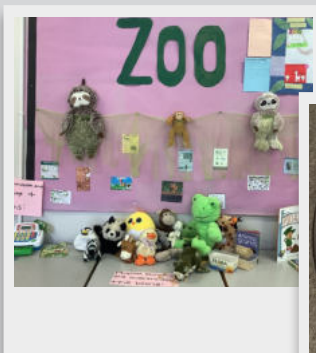


## Megan

Studied:  
T Level Childcare & Education

"The thing I have learned the most is placement as this allowed me to put my learning into practice and also allowed me the hands on experience to test if this was the right career for me and it allowed me to grow as a professional and given me the confidence and knowledge for my future as a teacher of SEND. My course tutor has supported me throughout the course and pushed me to achieve my best. She's always there if you are struggling and will do her best to support you. The SPLD team has helped as they gave me resources and also given me support with my exams, extra time and rest breaks."

## Examples of student work



We work with over 200 local employers in the Childcare & Early Years and Health & Social Care setting.

## Courses we offer

Level	Course	Campus
Level 1	Caring for Children	City College Norwich
Level 2	Childcare & Education	City College Norwich
T Level Transitions	Early Years & Education	City College Norwich
Level 3 - T Level	Early Years Educator	City College Norwich
Level 3 - T Level	Assisting Teaching	City College Norwich
Level 3 - T Level	Education & Early Years	Paston College

## What can I do next?

### Level 1

Caring for Children

### Level 2

Childcare & Education

### T Level

T Level Transition  
Early Years & Education  
Early Years Educator  
Assisting Teaching  
Education & Early Years

### Apprenticeship

Early Years Educator Level 3  
Teaching Assistant Level 3

### Degrees

FdA Early Childhood Studies  
(with Early Years Educator Status)  
BA (Hons) Childhood & Youth Studies  
BA (Honors) Additional Needs and Disabilities

## Experience the working world

Through the college's links to the profession, all childcare and early years students will complete relevant industry work placements two days per week



## Careers

**Teaching Assistant**  
£12k-£23k per year

**Nursery Worker**  
£14k-£24k per year

**Primary School Teacher**  
£23k-£67k per year



# Construction & Building Services

The Construction industry is a large proportion of our economy with a vast range of career opportunities in both trade and professional roles.

We offer study programmes in a range of subject areas, these courses give you the underpinning knowledge and practical skills to progress onto another course, an apprenticeship or higher education. As part of your course we will help you to develop your employability skills as well as explore career opportunities in your chosen field. A wide range of courses are available within this diverse sector offering varied job opportunities in trade areas, technical and professional roles.

## What is it about?

A wide range of courses are available within this diverse sector offering varied job opportunities in trade areas and technical and professional roles.

## What will I do?

Depending on your chosen course you will develop practical skills in a workshop and develop technical knowledge in a classroom environment. You will learn the core skills for your specialism from industry trained and highly experienced staff. Courses are available from Entry Level through to Level 3.

We work closely with local employers to ensure our courses are meeting industry standards and needs and where possible we will plan site trips and support you to secure work experience to further develop your skills.

## Progression

Whatever your starting point we have options available for you, you can progress onto higher level courses, do an Apprenticeship or go into employment once you have achieved the required skills and qualifications.

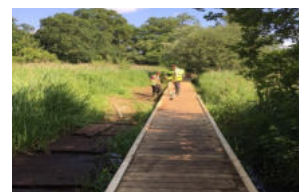
We also offer a range of Higher Education courses including HTQ's in areas such as Construction management.

## Is it suitable for me?

If you are practical, creative, like finding solutions to problems, want to help people and improve the world around us then this could be the industry for you.

## Employer links

Employers we currently work with to secure industry placements and enrichment opportunities are Morgan Sindall, LSI Architects, MJS Projects, Pentaco Construction, Kier, Norfolk County Council and Canham Consulting.



## Enrichment opportunities

You have the opportunity to participate in guest speaker sessions, site trips, and project work.





Photo credit: LSI Architects

## Courses we offer

Level	Course	Campus
Level 1	Bricklaying	City College Norwich
Level 1	Carpentry	City College Norwich
Level 1	Building Services – Electrical	City College Norwich
Level 1	Building Services – Plumbing	City College Norwich
Level 1	Painting & Decorating	Easton College
Level 2	Bricklaying	City College Norwich
Level 2	Carpentry	City College Norwich
Level 2	Electrical Installations	City College Norwich
Level 2	Painting & Decorating	Easton College
T Level Transition	Electrical	City College Norwich
T Level Transition	Plumbing	City College Norwich
Level 3 - T Level	Construction Design Surveying & Planning	City College Norwich
Level 3 - T Level	Building Services Engineering – Electrotechnical Engineering	City College Norwich
Level 3 - T Level	Building Services Engineering – Plumbing & Heating	City College Norwich
Level 3 - T Level	On-Site Construction – Carpentry, Bricklaying & Painting and Decorating	City College Norwich

## What can I do next?

### Level 1

- Bricklaying
- Carpentry
- Building Services - Electrical
- Building Services - Plumbing
- Painting & Decorating

### Level 2

- Bricklaying
- Carpentry
- Electrical Installations

### T Level

- T Level Transition Electrical
- T Level Transition Plumbing
- Construction Design Surveying & Planning
- Building Services Engineering – Electrotechnical Engineering
- Building Services Engineering – Plumbing & Heating
- On-Site Construction – Carpentry, Bricklaying and Painting & Decorating

### Apprenticeship

We offer a range of Apprenticeships, please see page 92 for more information

### Higher courses

We offer HNC and HND courses in Construction Management. Please see page 96 for more information.



## Careers

**Electrician**  
£18k-£42k per year

**Site Carpenter**  
£17-£38k per year

**Bricklayer**  
£17-£40k per year

**Painter & Decorator**  
£17-£32k per year

**Construction Manager**  
£27-£65k per year

**Plumber**  
£15-£40k per year



# Creative Media

**These courses are designed to enable you to develop and explore your creativity and to prepare you for university level courses or to enter the creative media sector at entry level. Develop your professional skills with The Media Learning Company, a student led production company in which students work with real clients and deadlines, whilst mentored by industry professionals.**

The creative media courses are designed to give you all-round media knowledge through theory, research, development, and technical craft skills. This knowledge and experience will aid you to progress with a skill level enabling you to work within the highly collaborative and creative media sector.

## What will I do?

Our experienced lecturers provide hands on learning with briefs that reflect current working practice. These projects utilise industry standard software and equipment.

Projects range from music video production, TV studio production, documentary filmmaking, audio production and advert production to working with real clients, actors and performers.

The courses have renowned links with industry and students will collaborate regularly to gain up to date understanding of professional practice.

Media Learning Company students will research, pitch, budget, script, design and film live projects which will be edited and distributed. The end product will

be created for real clients to real deadlines. This mimics industry structure prepares the students for working in this sector.

Across the courses students have the opportunity to attend some excellent enrichment activities and trips from London to New York and Berlin. And locally they are introduced to guest speakers from within the creative media sector.

## Progression

Our courses are designed to ensure that you are ready to launch your career in the creative industries. Progression on to university level study and employment in the industry is one of our key strengths. Our students go on to some of the most competitive university

level courses in the country at universities such as University of West England, Leeds Arts, Salford University, Norwich University of the Arts, Lincoln, Ravensbourne and Manchester Met. Many of our students are also successful in gaining internships with Disney, BBC, British Film Institute and ITV.

## Is it suitable for me?

If you love being creative and have a passion for moving image, story telling or production then you could be very well suited to working in the creative arts.

Find out more about Pre-Degree Foundation Diploma on page 98.

## Digby

Studied:

**Level 2 Creative Media Production & Technology**

What next:

**Level 3 Creative Media**

" I chose Creative Media because I've always loved storytelling and learning about how to effectively tell relevant and compelling stories. Getting to meet both industry professionals and creative people in the local area has been amazing and has presented me with amazing opportunities such as my final major project where I'm doing a documentary for Young Norfolk Arts Foundation, who I first heard about when they came to talk to us in class. I felt supported by my lecturers and I have always felt comfortable asking any questions. Their passion and enthusiasm for teaching media has continued to encourage and inspire me. This course has taught me a lot about the media industry in general but has shown me most of all how much I love film and creating films, which is what I hope to study in the future at university."

## Student achievement

Students on Level 2 Creative Media have had great success in competitions – earlier this year one of our students won a film mash-up with the East Anglian Film Archive – the prize was £250 and seeing their film on the big screen as part of the Norwich Film Festival. We also won a trip to London to visit Snapchat's HQ and create new lenses and won £700 of equipment for our course.



## Exclusive facilities

All of our Creative Arts students have access to exclusive facilities in our state of the art Creative Arts Building where you will have access to our 3D workshop, textiles workshop, art rooms flooded with natural light, and a TV and photography studio.



## Enrichment opportunities

### For Level 3 Creative Media

Students have the opportunity to go on trips to London, Paris and New York as well as produce content to be broadcast on Radio Norfolk and Suffolk and films that are screened at Cinema City. Past students and industry specialists regularly visit the classroom to speak to our students about their experiences. We also have strong links with the British Film Institute.

## Enrichment opportunities

### For Level 2 Creative Media

Students take a trip behind-the-scenes at Sky TV Studios to create a news report in their TV studios, a tour of the Warner Bros Studio for a lesson in film-making and see sets and props used in the Harry Potter film franchise. There are free cinema trips courtesy of IntoFilm, the chance to hear from Oscar-winning producers, directors and writers via the Norwich Film Festival, talks from local media employers and industry professionals including BBC Radio Norfolk, Eastern Daily Press etc.

## Courses we offer

Level	Course	Campus
Level 1	Creative Media Production	City College Norwich
Level 2	Creative Media Production & Technology	City College Norwich
Level 2	Creative Media	Paston College
Level 3	Creative Media Production & Technology	City College Norwich
Level 3	Creative Media	Paston College
Level 3/4	Pre-Degree Foundation Diploma: Media Learning Company	City College Norwich

## What can I do next?

- Level 1**
  - Creative Media Production
- Level 2**
  - Creative Media Production & Technology
  - Creative Media
- Level 3**
  - Creative Media Production & Technology
  - Creative Media
- Level 3/4**
  - Pre-Degree Foundation Diploma: Media Learning Company
- Apprenticeship**
  - Junior Content Producer Level 3

**ual:** university of the arts london

All of our creative arts courses are awarded by University of the Arts London



## Careers

**Editor**  
£27k-45k per year

**Producer**  
Variable

**Director**  
Variable

**Sound Operator**  
£26k-47k per year

**Lighting Technician**  
£19k-32k per year

**Camera Operator**  
£30k-32k per year

**Animator**  
£14k-36k per year



# Engineering

**Engineers are at the heart of the design, manufacture and maintenance of the technology which we all depend on. This covers everything from electronic devices, to vehicles, planes, submarines, buildings and bridges, defence systems, power plants, and many more.**

Our courses will give you a broad base of engineering skills and an understanding of the engineering industry, while enabling you to develop more in-depth knowledge and practical experience in your chosen specialism.

All our engineering courses have been designed with engineering employers to make sure you gain the knowledge, skills and behaviours needed to become a successful engineer.

The wide range of local and international engineering companies we work with include KLM UK Engineering, Lotus, Haas Automation, Thurne Middleby, TML Precision Engineering, and North Norfolk Railway.

## What will I do?

Your learning will cover all aspects of engineering theory and practical skills. You will be fully prepared to work in an engineering environment, gaining a detailed practical understanding of health and safety legislation, safe and effective use of tools and materials, hand skills, engineering mathematics and physics, working with others, interpretation and use of engineering data, digital skills, simple and complex technical systems, as well as developing yourself and your engineering career.

Our T Level courses will give you a thorough grounding in Engineering Fundamentals with the opportunity to specialise in the following fields:

- Mechanical
- Mechatronic
- Light and Electric Vehicle.

The core year covers Engineering Mathematics, Electrical and Electronic Systems, Applied Physics, Thermodynamics, Fluid Dynamics, Control System, Health and Safety, Project Management, Engineering Business, and more. The Occupational Specialism year will see you spend a minimum of 315 hours on an industry placement with an engineering employer.

## Progression

Our courses will help you develop the knowledge, skills and behaviours you need to be successful and progress through our course levels, on to Apprenticeships or Higher Education and into the industry in your chosen field.

Our students go on to a wide variety of roles with leading employers, including as

mechanical engineers, aviation mechanics/engineers, engineers within the Armed Forces, project managers, and many more.

## Is it suitable for me?

If you enjoy problem solving, learning how things work, fixing things and coming up with ideas for improvements, then you could be well suited to a career in engineering.



## Enrichment opportunities

### Engineering students visit Classic Team Lotus

Among the many exciting enrichment opportunities we offer, Level 3 Engineering students visited Norfolk's world-renowned classic motorsport business Classic Team Lotus. During the visit to Lotus's original Hethel workshops, students had the chance to see elements of their learning in action and talk to specialists in the field about careers in motorsport.



## Hollie

Studied:  
**Aviation Engineering**

What next:  
**Completing an Apprenticeship with KLM UK Engineering**

"Attending City College Norwich allowed me to get lots of hands on experience with metalwork, which I really enjoyed. I gained a lot of confidence being at College and it definitely made me realise what I want to do."







## Learn in the new Advanced Construction and Engineering Centre

You will experience in-depth learning on state-of-the-art technology. Benefit from the specialist knowledge and skills of our highly experienced staff, who all have a background in the industries you are learning about.

Opened in 2023, our new Advanced Construction and Engineering (ACE) Centre features the latest machinery and tools to train students in the advanced technical skills needed as part of the move to sustainable, low-carbon technologies. Within the ACE Centre we have a Sustainable Transport Workshop, where motor vehicle students work on electric and hybrid vehicles, Computer Aided Design suites, and the latest 5-axis CNC lathes and milling machines that are used at the highest levels of industry.

Our mechanical engineering facilities include the machining, diagnostic and testing equipment and tools you will find used in industry. We also have hand fitting workshops to teach the fundamentals of quality component production by hand.

## Courses we offer

Level	Course	Campus
Level 1	Engineering	City College Norwich
Level 2	Engineering	City College Norwich
T Level	Transition Engineering	City College Norwich
T Level	Transition Land Based Technology	Easton College
T Level	Mechanical Engineering	City College Norwich
T Level	Mechatronic	City College Norwich
T Level	Fitting & Assembly	City College Norwich
T Level	Light & Electric Vehicle	City College Norwich
T Level	Land Based Engineering	Easton College

## What can I do next?

### Level 1

Engineering

### Level 2

Engineering

T Level Transition  
Engineering & Motor Vehicle

### T Level

T Level Maintenance  
Engineering Technologies:  
Mechanical

T Level Maintenance  
Engineering Technologies:  
Mechatronic

### Apprenticeship

Engineering Technician  
- Machinist Level 3

Land Based Service  
Engineering Technician  
Apprenticeship Level 3

Engineering Technician  
- Mechatronic  
Maintenance Level 3

Engineering Technician  
- Product Design &  
Development Level 3

Engineering Technician  
- Technical Support Level 3

### Higher courses

HNC Engineering  
(Mechanical Engineering)

HND Mechanical  
Engineering (Top Up)

HNC Engineering  
(Electrical, Electronic  
Engineering)

HND Embedded Electronic  
Systems (Top Up)

Level 5 Professional  
Aviation Engineering  
Practice\*

\*Subject to revalidation



## Careers

### CNC Machinist

£36k per year

### Maintenance Technician

£31k per year

### Mechanical Engineer

£36.5k per year

### Robotics Engineer

£43.5k per year

### Automotive Mechanic

£31.5k per year

### Aerospace Engineer

£37.5k per year

### Chemical Engineer

£37.5k per year



# ESOL

English for Speakers of Other Languages 16-19

**We offer English for Speakers of Other Languages to help students with living in the UK which will help them to progress onto other college courses.**

## What will I do?

You will study speaking and listening, reading and writing plus maths, Citizenship, Employability, IT skills, vocabulary and grammar. You may also do vocational tasters where appropriate.

## Progression

The course is designed to help students complete Entry levels to be ready for Level 1 and level 2 courses at college and elsewhere.

## Course levels

Course levels range from pre-entry, through to Entry Levels 1, 2 and 3 to Level 1 and 2. Students who learn fast will have the opportunity to complete more than one level within the year.

## Is it suitable for me?

Suitable for young people who do not speak English as a first language and are not yet ready for college courses at Levels 1, 2 and 3.

## Diversity & culture

ESOL aims to not only teach English but also to develop cultural awareness, respect and study skills. The students and teachers come from diverse backgrounds; there are presently 27 nationalities and over 18 languages.

## Courses

**Entry Level 1**  
ESOL plus Maths

**Entry Level 2**  
ESOL plus Maths

**Entry Level 3**  
ESOL plus Maths

**Level 1**  
ESOL plus Maths



## Enrichment opportunities

Students participate in trips to get to know the local area, including museums, The National Centre for Writing & a local farmstead. They also have the option of various vocational activities at college. This year, two groups had a regular cookery lesson, and several groups did a painting & decorating project where they gained an Entry Level 3 qualification.

## Veronique

Studied: **English for Speakers of Other Languages (ESOL)**

What next: **Masters Degree in International Hotel & Tourism Management at Oxford Brookes University**

*"When I arrived at City College Norwich, I couldn't even spell my name in English. By the end of my first year I felt welcomed in the community and able to express my own views and thoughts."*





# Game Design, Game Development, Digital Art & Animation

These courses are designed to enable you to develop and explore your creativity and to prepare you for university level courses or to enter the creative industries at entry level.

For those who have an interest in video games, digital art and animation to explore, develop and test their creativity, get an insight into the various roles within this creative sector, and develop the skills, knowledge and understanding necessary to progress to degree level study or into employment.

## What will I do?

Our experienced lecturers provide learning through a series of workshops and project briefs that reflect contemporary industry ideas and practices. You will develop your critical and creative skills and gain a broad introduction into the exciting and rapidly developing world of games design, digital/concept art and animation.

In addition to creative and technical skills you will learn to initiate and manage projects, communicate effectively with others, and work independently and in teams.

## Progression

Our courses are designed to ensure that you are ready to launch your career in the creative industries. Progression on to university level study and employment in the industry is one of our key strengths. Our students progress to some of the most competitive university level courses in the country at universities and art schools such as Falmouth,

Arts University Bournemouth, Ravensbourne, UAL, Westminster, Sheffield Hallam, Bath Spa, UWE and NUA.

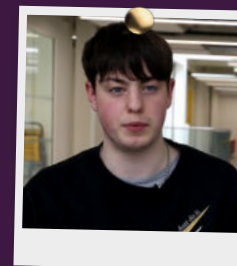
## Is it suitable for me?

If you like to problem solve, experiment, be challenged and enjoy working collaboratively whilst taking full responsibility for your personal creative journey, then you could be very well suited to working in the games industry.

## Cameron

Studied:  
**Level 2 Games Design**

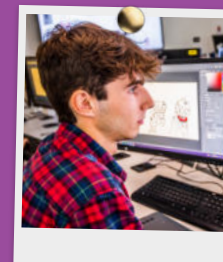
What next:  
**Level 3 Game Design & Development**



"I chose this course as I had a passion for playing games and wanted to see how much work goes into making a game as well as pursuing a possible career in games design. I enjoyed learning how to use different software and being given various dynamic projects as well as making new friends and learning from each other. The teaching support is excellent communication wise and work wise as if you are ever stuck, you'll always have a good teaching team with experience to help you with whatever your needs may be. Before I wasn't so sure on what I wanted to do in life but doing this course has opened many possible routes whether that will be in the games industry or elsewhere".

## Showcase your work

Level 3 Game Design & Development students have exhibited their games at the OneLifeLeft games convention. This is a great opportunity to showcase their work and get valuable feedback from the local gaming community.





# Exclusive facilities

All our Games students have access to exclusive facilities in our state-of-the-art DigiTech Factory where you will use high spec PCs that have access to specialist software.



# Courses we offer

Level	Course	Campus
Level 2	Games Design	City College Norwich
Level 3	Game Design & Development	City College Norwich
Level 3	Digital Art & Animation	City College Norwich

# Jordan

Studied:  
Level 3 Game Design & Development

What next:  
After college I will be going on to a university degree

"I chose the course because one of my passions is gaming, and I feel that I can be very creative. I have had previous success with making assets inside games, that have gained a lot of recognition, and I want to be able to expand on that. The teaching and support were very effective and were there when needed. If there were any issues they would be resolved as quickly and as easily as possible".

"Since I have switched to the game design career path, I have been thinking a lot of how I will progress. I would like to further my studies on a university course which will then allow me to move forward into the games industry with more experience, qualifications and connections".

# Enrichment opportunities

During your time as a student, there will be lots of great enrichment activities including trips to London, Paris and New York. There are a range of game related activities while studying on the courses such as trips to EGX and The London Games Festival and we work very closely with OneLifeLeft events, The Norwich Games Festival and The Games Table.



# Careers

**Games Developer**  
£19k-£59k per year

**Animator**  
£14k-£36k per year

ual: university of the arts london

All of our creative arts courses are awarded by University of the Arts London

# What can I do next?

- Level 2
  - Games Design
- Level 3
  - Creative Media Production & Technology
  - Digital Art & Animation
  - Games Design
- Level 3/4
  - Media Learning Company
- Apprenticeship
  - Junior Content Producer Level 3



# Hairdressing, Barbering, Beauty Therapy & Make Up Artistry

**The hair and beauty industry is a vibrant, dynamic and creative sector offering fantastic employment and training opportunities. The sector is a very fast-paced, ever-changing industry where new treatments, services, trends, and techniques are continually developing.**

This sector alone employs nearly a quarter of a million people and is worth over £6 billion to the UK economy. Within our department there is a wide choice of vocational courses. They are designed to offer opportunities to all who have an interest in working in these creative industries. If you want to work in a salon, a spa, on a film set or start your own business, our hairdressing, beauty therapy, barbering and media make up courses could be for you.

## Hairdressers & Barbers

Work in a wide range of employment settings such as hotels, on cruise liners, in hospitals and health clubs. With further experience, they can also become salon owners or follow careers in hair design for photography and fashion, teaching and training and work for manufacturers of hairdressing products as a technical advisor.

## Beauty Therapists

Beauty therapists have the flexibility to work in a salon, spa, cruise liners, nail bars or set up a business by themselves. It is a skill that you can take anywhere in the world. With further experience you can develop into management, aesthetics and product development.

## Make Up Artists

This exciting course aims to provide you with a range of specialist practical skills and technical knowledge, which will equip you to seek employment or further training within the Media Make Up Industry.

This qualification could lead to a job as a: Fashion & Photographic Hair & Makeup Artist, Television, Film & Theatre Hair & Makeup Artist, Specialist Bridal Hair & Makeup Artist, Catwalk/Runway Hair & Makeup Artist or Teaching.

## What is it about?

Our courses will give you the skills, knowledge and confidence you need to start a career in this industry. Not only you will learn the technical skills such as haircolouring, body massage, skin fades in barbering, and dressing and fitting wigs in make-up artistry but also the teamworking and interpersonal skills, which are vitally important too.

## What will I do?

You will gain hands-on experience working with employers, industry brands and learning in our specialist training salons. You will learn the core skills and technical skills you need to be successful in the industry from our highly skilled and experienced staff who work with top industry brands such as Decleor, ASP (Affinage), GHD, St Tropez and MAC makeup.

Experience of employment is an integral part of your course as we prepare you for the expectations of our industries. This can involve working in local salons, working with trade wholesalers; or fashion shows and theatrical productions such like at the Theatre Royal in Norwich.

Our beauty programmes include learning the skills in manicure, pedicure, facial treatments, waxing, eyelash tinting, eyebrow shaping, full body massage and electrical treatments.

## Is it suitable for me?

If you like working in a team and enjoy a fast-paced environment, then this could be the industry for you. Our industry expects high levels of personal presentation, effective communication skills and real motivation to produce the best results for our clients.

## Industry standard facilities

**Our students are equipped with the high standards and practical experience needed to work in the industry with access to up to date salon facilities.**

You will have access to a range of exclusive facilities such as the Solutions Hair Salon, Solutions Beauty Salon, specialist treatment rooms, The Barber Shop, massage room and our spa.

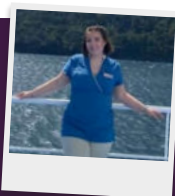




## Anna

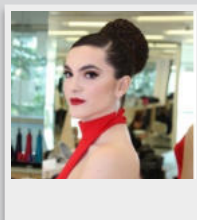
Studied:  
**Level 2 Hairdressing**

"After college Amy was employed by Shelley Line, a local Salon owner, as a junior stylist where she gained further experience and confidence. In October 2021 she joined Steiner 'The Onboard Spa' to travel the world working as a stylist on International Cruise liners. This had been a long term goal of Anna's. Since then she has travelled extensively visiting Australia, New Zealand, Fiji, Bora Bora, French Polynesia, Mexico and the Mediterranean to name but a few destinations!"

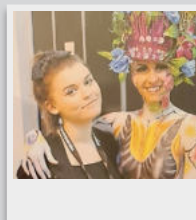


## Enrichment opportunities

You will have the opportunity to attend national trade shows, such as Salon International, Professional Beauty where guest speakers are also invited in to give their insights experiences of our industries. We have also had visits to galleries, Harry Potter World and theatre productions.



Hairdressing student Sophie Butcher gained a place in the final L'Oreal; Student of the year competition which was staged at the L'Oreal Studios in London.



Make Up Artistry student Viktoria Vargova won a second place at the World Skills Championship in Birmingham for her fabulous body painting creation.

## Courses we offer

Level	Course	Campus
<b>Level 1</b>	Hair & Beauty	City College Norwich
<b>Level 2</b>	Barbering combined with Ladies' Hairdressing	City College Norwich
<b>Level 2</b>	Beauty Therapy	City College Norwich
<b>Level 2</b>	Hairdressing (1 year)	City College Norwich
<b>Level 2</b>	Technical Certificate in Hairdressing (2 years)	City College Norwich
<b>Level 2</b>	Level 2 Technical Certificate Make Up Artistry	City College Norwich
<b>Level 3</b>	Barbering	City College Norwich
<b>Level 3</b>	Beauty & Spa Therapy	City College Norwich
<b>Level 3</b>	Hairdressing (1 year)	City College Norwich
<b>Level 3</b>	Advanced Technical Diploma Media Make Up Artistry	City College Norwich
<b>Level 3</b>	Advanced Technical Diploma Theatrical, Special Effects & Media Make Up Artistry	City College Norwich

## Real salon environment

Our training salons are open to the public which gives you the chance to experience working on real clients before you start work. Our Make Up Artists have a designated studio in which they develop create and photograph their creations.

## What can I do next?

### Level 1

Hair & Beauty

### Level 2

Barbering  
Beauty Therapy  
Hairdressing  
Make Up Artistry

### Level 3

Barbering  
Beauty & Spa Therapy  
Hairdressing  
Make Up Artistry  
Theatrical, Special Effects & Media Make Up Artistry  
T Level Hairdressing

### Apprenticeship

Hair Professional Level 2



## Careers

**Hairdresser**  
£14-30k+ per year

**Salon Manager**  
£20k+ per year

**Beauty Therapist**  
£16-25k+ per year

**Make Up Artist**  
Variable

**Barber**  
£15-25k+ per year



# Health & Social Care

**If you have a passion for helping others and are looking to start a rewarding career that allows you to make a difference to people's lives, our health and social care courses could be for you.**

This programme offers exciting, robust and fit for purpose qualifications which meets the needs of our students, health and social care employers, awarding qualification bodies and universities with destinations in degree courses for Midwifery, Paramedic Science, Nursing, Social Work, Psychology and Education. Whether you want to work in a care environment, support families as a social worker or become a nurse or midwife, our courses are designed to give you the knowledge and practical skills you need to pursue a career in one of these invaluable vocations.

## What will I do?

You will have opportunities to work with a wide range of employers to enhance your practical skills, putting into practice what you have learnt in the classroom. You will be given a unique learning environment and taught by highly skilled staff who are experts with years of experience in the health and social care sector.

You will benefit from unique sessions from industry specialists to help you develop your core knowledge. Alongside this, you will also participate in promotional campaigns and charity events to raise awareness for the industry and attend numerous sector specific trips and visits. These include working with probation officers, social workers, midwives and nurses.

## Progression

Our courses will provide you with core knowledge and practical skills that will allow you to progress on to a variety of rewarding destinations after completing your qualification. These could include the next level of college-based study, university level courses, an Apprenticeship or employment. Job opportunities can be found within midwifery, social work, care or other allied health related professions.

## Is it suitable for me?

If you are practical, creative, flexible and adaptive, enjoy finding solutions to problems and want to help others, health and social care is for you.



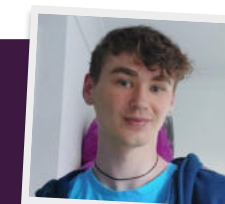
## Employer links

We work with over 200 local employers in Health & Social care and Childcare settings.

### Lucas

Studied: **Health and Social Care Level 3 BTEC**

What next: **Extended Diploma in Health & Social Care**



"I have a passion for health and social and I have always enjoyed helping others. I want to get a job in social care. My tutors have a method of delivery that is digestible for me and is effective to my learning despite my learning difficulties (dyslexia). They have supported and provided me with the resources to be able to learn and achieve goals that had been out of reach for me in previous educational years. I would describe the teaching and support at exemplary level, my tutors have been supportive, encouraging and understanding to me and my individual needs."



# Exclusive facilities

By studying on the T level Health: Supporting Healthcare programmes, you will be learning in our new skills suite, 'Healthcare Central', which is a state-of-the-art modern facility comprising of fully functioning hospital beds and hoists, life size dissection models and an Anatomage Table, making City College one of the leading further education providers for modern healthcare in the country.



# Enrichment opportunities

Through the college's links to the industry, all health and social care students will complete regular relevant industry work placements.

# Courses we offer

Level	Course	Campus
Level 1	Health & Social Care	City College Norwich
Level 1	Health & Social Care	Paston College
Level 2	Health & Social Care	City College Norwich
Level 2	T Level Transition Health & Science	City College Norwich
Level 2	T Level Transition Health & Science	Paston College
Level 3	Health & Social Care	City College Norwich
T Level	Health: Supporting Healthcare (Supporting the Adult Nursing Team)	City College Norwich
T Level	Health: Supporting Healthcare (Supporting the Mental Health Team)	City College Norwich
T Level	Health: Supporting Healthcare (Supporting the Adult Nursing Team)	Paston College

# What can I do next?

- Level 1**
  - Health & Social Care
- Level 2**
  - Health & Social Care
  - T Level Transition Health & Science
- Level 3**
  - Health & Social Care
- T Level**
  - Health: Supporting Healthcare (Supporting the Adult Nursing Team)
  - Health: Supporting Healthcare (Supporting the Mental Health Team)
- Apprenticeship**
  - Adult Care Worker Level 2
  - Healthcare Support Worker Level 2
  - Dental Nurse Level 3
  - Lead Adult Care Worker Level 3
  - Senior Healthcare Support Worker Level 3
- Higher courses**
  - FdSc Health Studies
  - FdSc Mental Health Practice
  - Social Worker Degree Apprenticeship Level 6
  - Higher Apprenticeship - Assistant Practitioner (with FdSc Health Studies embedded)
  - Higher Apprenticeship - Assistant Practitioner (with FdSc Mental Health Practice embedded)



# Careers

**Midwife**  
£22-48k per year

**Social Worker**  
£24-40k per year

**Nurse**  
£22-48k per year

**Healthcare Assistant**  
£15-20k per year



# Hospitality & Catering

From restaurants to luxury hotels, pop up restaurants and indulgent brands, the hospitality and catering industry is an ambitious sector that continues to adapt and innovate.

We offer a wide range of hospitality courses in a variety of disciplines including professional cookery, event management and front of house service to ensure you have the skills you need to start a career.

## What will I do?

Courses are delivered in our internationally renowned 'Hotel School' which will provide you with a great introduction to a career in hospitality and catering and give you access to award winning training environments including our highly acclaimed Debut Restaurant.

You will learn about the jobs available in the hospitality and catering industry, develop practical skills in first class learning environments and benefit from a highly skilled and experienced award-winning team.

Whether you've already got a dream career destination in mind, or you just know you want to work in the sector and want to learn more about it, our Travel & Tourism course will help you build the skills you need for a successful and fulfilling career.

## Progression

Employers are always on the lookout for well trained and skilled staff. Our links with employers locally, nationally and internationally, give our students a variety of exciting career opportunities after completing their courses.

You can also progress on to Apprenticeships and university level courses that will allow you to specialise, develop management skills and gain further industry experience.

## Is it suitable for me?

If you are willing to work hard, are passionate about the industry and have a flexible approach to your work, our hospitality and catering courses could be for you.

## Employer links

In addition to our extensive working relationships with Hotels and Restaurants, the School recognises additional opportunities to work with employers within the food industry such as food manufactures, food development and care such as Norfolk and Norwich University Trust Hospital.



**Josh**

Studied:  
**Advanced Technical Diploma Professional Chefs Level 3**

What next:  
**Working in private dining and mastering butchery skills**

"I had a passion for cooking and the college has a good reputation for its catering courses. My Tutors have been very supportive, full on and very detailed. They are perfectionists who want us to get everything right and push us to exceed our limits. Completing this course has given me loads of options and opportunities. It has allowed me to explore lots of careers in the catering industry."

## Award winning facilities

Our Hospitality and Catering courses are delivered in our internationally renowned Hotel School, equipped with professional kitchens and a fully functioning restaurant.

Our Debut Restaurant holds an AA Gold Standard Accreditation - the highest level a training restaurant can achieve - and is seen as an example of best practice in the UK.

You will have access to a range of exclusive facilities such as: Debut Restaurant, Debut Café, a private dining room, state of the art training kitchens, dedicated pastry kitchen and bakery.





## Enrichment opportunities

All our courses encourage learning in a practical context and our students have undertaken work experience with companies such as Michelin star restaurants, holiday companies, tourist destinations and hotels. This combined with the live experience that can be gained in our own outstanding facilities, which include seven kitchens, three restaurants and responsibility for the delivery of many key events on behalf for the local community and beyond.

Our students benefit from real work practice to bring their learning to life such as restaurant and hotel take-overs. Employer relationships from employers and the hotel school are outstanding, enabling industry and education to identify opportunities for its Hospitality and Catering students. The Hotel School believes in real hands-on work experience to underpin the theoretical elements of the industry.



Various competitions offer students the opportunity to test and develop their skills and encourages them to make useful improvements in response to detailed feedback from the public and expert practitioners.

## Courses we offer

Level	Course	Campus
Entry	Cookery	City College Norwich
Level 1	Cookery	City College Norwich
Level 2	Food & Beverage Service	City College Norwich
Level 2	Food Preparation & Cooking	City College Norwich
Level 2	Hospitality & Catering	City College Norwich
Level 3	Advanced Technical Diploma	City College Norwich
Level 3	Professional Chefs	City College Norwich
Level 3	Professional Cookery	City College Norwich

## What can I do next?



### Excellent progression

Students gain the skills required to progress on to some of the most notable destinations including The Savoy and The Ritz.



## Careers

### Chef

£18-60k per year

### Restaurant Manager

£18-50k+ per year

### Events Manager

£17-80k per year

### Catering Manager

£20-60k+ per year



# Information Technology & Digital

**Information Technology and Digital Services are some of the fastest growing sectors in the UK with high demand for qualified people with strong digital skills.**

Our Information Technology & Computing courses will provide you with the knowledge and skills you need to begin your career in the IT/digital industry. They will provide you with a broad basic range of IT and Digital knowledge but also allow you to specialise in either Software Development and Programming or Digital Support Services.

## What will I do?

You will gain in-depth and up-to-date knowledge about key aspects of IT and computing such as programming, networking, infrastructure and cyber security. You will have access to high spec computers to allow you to learn core skills such as programming and the basics of IT systems. Local employers and IT professionals will also visit the College and provide guests talks.

## Progression

Our Information Technology and Computing courses will give you the opportunity to progress on to University and Higher Education courses, Apprenticeships or employment to start your career in roles such as Software Engineer, Computer Programmer or IT Technician.

## Is it suitable for me?

You need to have a keen interest in IT and an understanding of basic programming languages. You also need to be resilient, good at problem solving to deal with programming queries and have an eye for detail. Communication is also key as you will need to work with your peers on a daily basis.

## Employer links

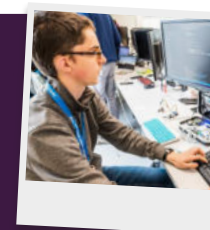
Our courses have been designed with employers to ensure you get the skills and experience you need to work in the industry. As part of our Digital T-Level courses, students undertake Industry Placement with an employer such as Aviva, Greater Anglia etc. Within these placements, students further develop and apply their skills already learnt in the class as well as developing new industry-specific skills they can take forward into the future.

## Kieran

Studied: T Level Digital Production Design and Development 2020

What next: Junior Developer for a Software company

"I had wanted to pursue a career in the Software development industry and the Digital T Level provided me with the skills and knowledge required to make a start in the industry. The inclusion of the work placement was also a good factor for this course as it provided me with the required experience and connections to start my digital career. I particularly enjoyed projects we were given for developing software and applications. This helped me to learn best practices to follow for writing code and developed my knowledge and ability to write, test and debug code. The teachers did a good job of delivering the course content and were thorough in explaining the details. I felt that the teachers took the time to answer any questions I had and were willing to give advice."







## State-of-the-art facilities

The Information Technology and Digital T Level courses are situated in the new, purpose-built DigiTech Factory. Students have access to industry standard equipment and software both in a classroom and practical lab environment.

The building is also designed to promote collaborative working as well as giving students the experience of working in a real-world type of environment.

Our Digital Infrastructure lab, gives students access to hardware and software they need to create their own network environments and build, configure and maintain servers and virtual machines.

Students also get hands-on experience with new and emerging technology such as Virtual Reality, Augmented Reality & AI.

## Courses we offer

Level	Course	Campus
Level 2	T Level Transitions Digital	City College Norwich
Level 3	T Level Digital Production, Design and Development	City College Norwich
Level 3	T Level Digital Support Services	City College Norwich
Level 3	Computing	Paston College

### Developed with employers

Our courses have been designed with employers to ensure you get the skills and experience you need to work in the industry

## What can I do next?

- Level 2**
  - T Level Transition Digital Support
- Level 3**
  - T Level Digital Production, Design and Development
  - T Level Digital Support Services
- Apprenticeship**
  - Digital Marketer Level 3
  - Infrastructure Technician Level 3
  - Data Analyst Level 4



### Careers

- Software Developer**  
£20-70k per year
- IT Support Technician**  
£16-35k+ per year
- System Analyst**  
£20-60k per year
- Web Developer**  
£20-50k+ per year



# Motor Vehicle

The motor vehicle industry is a vital part of the UK economy. With the advances in electrical vehicle technology, and with over 1 million new cars being built every year and many more that need maintaining, motor vehicle workers play a vital role in keeping our nation moving.

Our courses have been developed with employers which means you will gain the skills you need to progress in the industry in a variety of ways including through routes to Higher Education, Vocational routes direct to industry and through Apprenticeships.

## What will I do?

You will develop an in depth understanding of the technical needs for today's motor vehicle maintenance and repair industry, starting with the core skills and developing understanding of the specialist skills required, to include diagnosis of complex faults and advanced systems operations.

You will start to explore the latest electric vehicle technology and get lots of practical experience in our industry standard workshops which contain the latest equipment and technology to help you get to where you want to be.

## Progression

Our motor vehicle courses are designed to help you develop the skills, knowledge and behaviours you will need to be successful and progress onto employment or an Apprenticeship. The T level route also opens opportunities for you to progress to Higher Education qualifications. The College's close connections with industry ensure that our courses will enable you to take your skills into the workplace, providing you with what you will need to progress to your next step. Students from our courses have progressed on to a wide variety of careers, including automotive technicians and race engineers.

## Is it suitable for me?

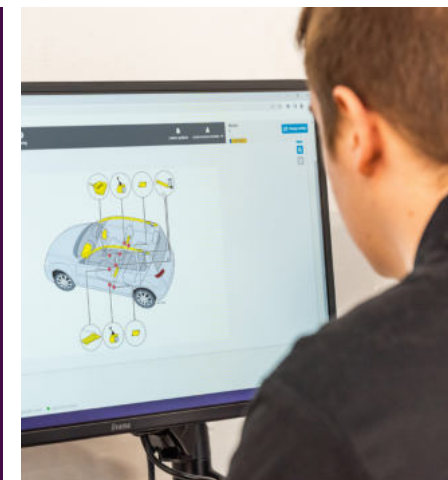
If you enjoy practical problem solving, learning how things work, fixing things and are interested in advancing motor vehicle technology, then you could be well suited to a career in the motor vehicle industry.

## Employer links

Employers are involved in the motor vehicle provision in a number of ways, to include but not limited to co-creation of curriculum content, development of project briefs, guest speaker sessions, offering industry placements and trips and visits to employers' locations to see real world practice. We have links with Lotus, Haas, Thurlow Nunn and Fresh Motors.

## Specialist workshops

All our engineering students will learn in our specialist workshops using the latest equipment and technology



## Sector leading equipment

The ACE centre and the sector leading equipment it holds provide our students with unique learning opportunities within this dynamic industry.





## State-of-the-art facilities

City College Norwich boasts new specialist workshops within our ACE (Advanced Construction and Engineering) centre, fully equipped with the latest training rigs and industry-leading diagnostic, testing and repair equipment for Electric Vehicles (EVs). As well as the electronics systems used in all modern vehicles – including leading specialist equipment for calibrating cameras and other elements of advanced driver assistance systems.

The sustainable transport workshop compliments the college's other motor vehicle facilities meaning all students, including those on T level and apprenticeships, will be fully trained to work on any type of vehicle and will play a key role in supporting the industry wide transition to low-and zero-emission vehicles.

## Courses we offer

Level	Course	Campus
Level 1	IMI Diploma in Automotive Maintenance	City College Norwich
Level 2	Vehicle Maintenance and Repair Diploma	City College Norwich
Level 2	Engineering and Motor Vehicle	City College Norwich
T Level	Maintenance, Installation and Repair: Light and Electric Vehicles	City College Norwich

## What can I do next?

### Level 1

IMI Diploma in Automotive Maintenance

### Level 2

Vehicle Maintenance & Repair Diploma

Engineering & Motor Vehicle

### T Level

Maintenance, Installation & Repair: Light & Electric Vehicles

### Apprenticeship

Motor Vehicle Service & Maintenance Technician (Light Vehicle) Level 3



## Careers

### Motor Mechanic

£18-35k per year

### Motor Vehicle Breakdown Engineer

£20-40k+ per year

### Vehicle Body Repairer

£15-30k per year

### Motorsport Engineer

£18-60k+ per year



# Performing & Production Arts

**These courses are designed to ensure you develop the skills and attributes you need to build a successful career in performance, events management and production.**

Whether you want to be a star on stage or work behind the scenes, our courses are designed to allow you to develop the practical skills you need to start a career. Each course has a specialism which gives you the chance to work collaboratively with students from other courses to complete projects to an industry standard.

## What will I do?

You will have exclusive access to our state-of-the-art rehearsal spaces to stage several full-scale productions in our industry standard Platform Theatre throughout your course.

You will learn from our highly skilled staff who are experts with years of experience in their unique specialisms including dance, acting, musical theatre, sound engineering and events and stage management.

Working with local and national organisations throughout the course helps you build links and contacts in the creative industries.

## Progression

Our students progress onto university level courses at some of the country's most sought-after drama schools including: Guildhall, Royal Welsh College of Music and Drama, East 15, Bird College of Dance and Theatre Performance, Rose Bruford and London Academy of Music and Dramatic Art (LAMDA).

Achieving Distinction on our UAL Level 3 Extended Diploma courses is worth 168 UCAS points, equivalent to 3 full A Levels at grade A.

## Is it suitable for me?

If you want to be part of high-quality, professional performances, if you thrive under pressure; if you are willing to work collaboratively to create outstanding work and can problem solve and take responsibility, then our performing arts and production courses are right for you.

## State-of-the-art facilities

The college has professional standard equipment and resources, including: our public-facing 160-seater Platform Theatre and box office; dance and musical theatre rehearsal spaces all with sprung floors within our award-winning Creative Art Building.

Production Arts students have access to industry standard software for lighting and stage design; Music students have access to our Live Room music studio, rehearsal spaces and high-spec PCs with access to Abelton for music tech.

## Enrichment opportunities

### Real theatre environment

Our 160 seat theatre hosts over 60 student performances to members of the public each year. Performance students perform as part of the Norfolk and Norwich Festival at Stage Two. Dance and Musical Theatre students work with industry practitioners throughout their time at college such as Joshua Clayton, Callum O'Brien, Zakary Darcy and Nic Myers.







## Employer links

Links with local and national employers is a significant strength of the department. Production Arts students regularly collaborate with the Production Bureau and Theatre Royal. Many of our academic staff are also creative practitioners and choreographers, with our Dance course leader, Hannah Ashmore winning the British Journal of Photography International Single Image Art Prize.

## Real artists

Our Performing & Production Arts courses are run by practising artists who are embedded within the Norwich and Norfolk performance scene. They are curriculum experts who can design courses that inspire, challenge and engage students; they are also industry practitioners who can provide guidance and mentorship, so students know how to engage professionally on social media; prepare for audition and interview and create an online presence that markets and promotes their skills.

## Courses we offer

Level	Course	Campus
Level 2	Dance	City College Norwich
Level 2	Performance	City College Norwich
Level 3	Acting	City College Norwich
Level 3	Dance	City College Norwich
Level 3	Music	City College Norwich
Level 3	Musical Theatre	City College Norwich
Level 3	Performance	City College Norwich
Level 3	Production Arts	City College Norwich

**ual:** university of the arts london

All of our performing arts & production courses are awarded by the University of the Arts London

## What can I do next?

Level 2

Dance  
Performance

Level 3

Acting  
Dance  
Music  
Musical Theatre  
Performance  
Production Arts

Level 3/4

Performance



## Careers

**Production Assistant**  
£15-30k per year

**Sound Technician**  
£16-35k per year

**Lighting Technician**  
£15-40k per year

**Actor/Dancer/Musician**  
Variable

**Screenwriter**  
Variable





# Science

**Explore and expand your natural curiosity with our T Level science courses. Our cutting edge laboratories and experienced staff will provide you with all the resources and encouragement you need to get you to where you want to be, whether that's university level study, apprenticeships or employment.**

Our T Level Science course will allow you to develop knowledge of biology, chemistry and physics at an A Level standard with an added focus on industry standard practices and lab techniques.

## What will I do?

In T Level Laboratory Science you will gain core knowledge in areas such as health and safety, ethics and scientific practices. You will then specialise in aspects of laboratory science such as atomic structures, genotyping or nuclear physics.

As part of the T Level course, you will complete an industry placement with an employer to develop your practical and technical skills.

## Progression

Our T Level Science course will allow you to start a career in laboratory science or health related professions. You can also use them to apply for university level courses in science related subject with a biology, chemistry or physics specialism. A T Level is the equivalent of three A Levels.

## Is it suitable for me?

If you're looking to develop a comprehensive knowledge of biology, chemistry and physics alongside work based skills and techniques, our science courses could be for you.

## Enrichment opportunities

**You will go on placement relevant to the industry you are working in, such as the Sainsbury's Laboratory.**

During the course you can expect to engage in the barcoding the breads project with the Earlham Institute.

You will also have regular guest speakers from employers such as:

- CEFAS who spoke about their plethora of international environment projects which had been underwritten by various governments around the world, e.g. looking at fishing quotas, marine conservation areas
- A local company, Solinatra, which works on sustainable alternatives to plastics to come in and deliver a session on 'My Career in Science'
- Continue with Legumes project - leaf education at John Innes
- UEA Biology department for DNA fingerprinting

"The T Level course built up my confidence as a person and offered me a direction in my life. It is nothing like any other course. My work placement at The Sainsbury's Laboratory taught me valuable life skills such as teamwork, the importance of networking with others and making some lifelong friends."

"The best thing about this course is the chance to get on placement. From this you can learn skills which can transfer into other jobs."

"There is a lot of support surrounding everything, including things outside of College and the content is well put together with a clear understanding of what we will achieve at the end of the course."



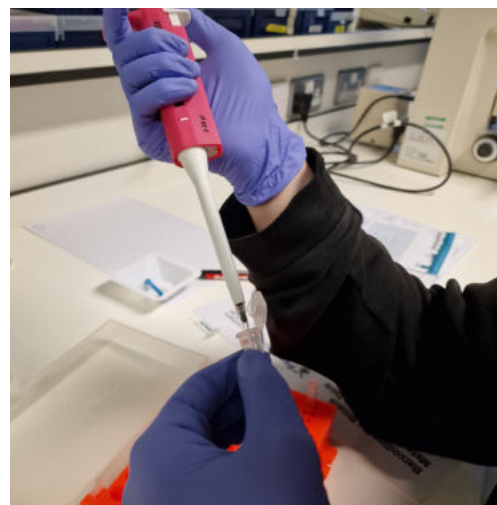


## T Levels explained

Studying T Level Lab Science will require you to complete 315 hours of industry-based practice throughout the course. You will be given the choice of a placement in an area of lab science that particularly interests you.

We work closely with the community at the Norwich Research Park to give our students the best opportunities of applying their skills and experience working in modern laboratories.

In the first year, assessment of your knowledge and understanding will be carried out through two core exams and an 'Employer-Set Project'. In the second year, there will be 'occupational specialism' assessments to complete.



## Courses we offer

Level	Course	Campus
T Level	Laboratory Science	City College Norwich



## Careers

### Chemist

£25-39k per year

### Marine Biologist

£15-50k per year

### Biochemist

£24-50k per year



## Studying at Easton College will give you access to state-of-the-art facilities including:

### Indoor Sports Complex

Our complex will give you everything you need to excel. With a spacious multi-purpose sportshall and cutting-edge equipment, you will have the perfect environment to enhance your skills, train with team mates and compete at your best.

### Gym & Strength Training

Achieve your fitness goals and build your strength with our fully-equipped Gym, Performance and Conditioning area. With a wide range of modern cardiovascular machines, weightlifting stations, and functional training equipment, you will have the tools necessary to enhance your physical performance. Our fitness trainers and strength and conditioning coaches will provide guidance, personalised workouts and support to help you reach new levels of strength and endurance.

### Outdoor Sports Pitches

From football and rugby to team building and outdoor fitness, our 3G and grass pitches provide the ideal playing surface for team training sessions, competitive matches and outdoor activities. Immerse yourself in natural surroundings and enjoy the thrill of outdoor sports in a picturesque setting.

### Sports Science & Rehabilitation

We understand the importance of sports science and injury prevention. Our labs are equipped with cutting-edge technology for performance analysis and exercise physiology research. We will also have dedicated space for injury rehabilitation and physiotherapy, ensuring that athletes receive the support they need to recover and return to peak performance.



# Sport & Uniformed Public Services

**Our Sport, Uniformed Public Services and Outdoor Leadership courses will be running from our Centre of Excellence at Easton College from September 2024.**

## Courses we offer

Level	Course	Campus
Level 1	Introductory Diploma in Sport	Easton College
Level 2	Entry to the Uniformed Services	Easton College
Level 2	Outdoor Leadership	Easton College
Level 2	Performance & Excellence	Easton College
Level 2	Sport	Easton College
Level 3	Entry to the Uniformed Services	Easton College
Level 3	Fitness Services	Easton College
Level 3	Outdoor Leadership	Easton College
Level 3	Performance & Excellence	Easton College
Level 3	Sports Coaching & Development	Easton College
Level 3	Sport & Exercise Science	Easton College



# Travel & Tourism

**Travel and Tourism is a lively and diverse sector that offers a range of varied job opportunities from resort reps and cabin crew to entertainers, event management and hospitality.**

Our travel and tourism courses are designed to give you the skills and knowledge you need to start a career in the industry.

## What will I do?

During the course, you will learn specialist industry knowledge and develop the core skills you need to work in the travel and tourism industry.

Learn how to provide exceptional customer service alongside key skills and knowledge on topics such as tourist destinations, marketing, and event organisation as you start your career journey. With a mixture of classroom-based theory and practical workshop sessions, you'll soon be on your way to working in your chosen field.

Our courses are designed to give you the opportunity to learn about the industry and create links with employers through a variety of practical hands-on experiences. These include taking part in large scale events and attending educational visits to Disneyland Paris and Spain.

Whether you've already got a dream career destination in mind, or you just know you want to work in the sector and want to learn more about it, our Travel & Tourism course will help you build the skills you need for a successful and fulfilling career.

- Cabin Crew
- Customer Service Agent
- Travel Journalist
- Holiday Rep
- Hotel Manager
- Concierge
- Attractions Manager
- Travel Agent
- Holiday Advisor

## Progression

Our students progress on to further study through university level courses and Apprenticeships or straight into employment.

## Is it suitable for me?

If you are practical, creative, like finding solutions to problems, enjoy communicating with others, can work as part of a team and have a can-do attitude, our travel and tourism courses could be for you.

## Enrichment opportunities

There are many different enrichment opportunities available when studying travel and tourism, for example:

- International Aviation Academy
- Team building days
- Disneyland Paris
- Year 2 residential to Spain

## Employer links

We are lucky to work with our alumni who are now employed in the travel and tourism industry. They visit the college throughout the year to talk to our students and provide a valuable insight into the industry.

Examples include: Jet2, easyJet, British Airways, Virgin Atlantic, Hays Travel, TUI and many more. We also work closely with ATPi, a leading business travel agent, Norwich Airport, Premier Travel and Oyster Travel.

**Jet2**

**easyJet**

**TUI**





## Exclusive facilities

Gain real experience at our International Aviation Academy at Norwich Airport.

## Courses we offer

Level	Course	Campus
Level 2	Travel & Tourism	City College Norwich
Level 3	Travel & Tourism with Cabin Crew	City College Norwich

## Wiktorja

Studied: **Level 2 Travel & Tourism and Level 3 Travel & Tourism**

What next: **Camp America for 3 months**

"I chose this course because I love to travel and wanted to learn more about different cultures and job opportunities. I have enjoyed learning about all the different aspects of travel, completing assessments for cabin crew on a real plane and improving my confidence. The support has been amazing throughout my time here at CCN, the staff have encouraged me to follow my ideal career."



## What can I do next?



### Level 2

Travel & Tourism

### Level 3

Travel & Tourism  
with Cabin Crew



## Careers

### Air Cabin Crew

£12-30k per year

### Travel Agent

£14-40k per year

### Tour Manager

£16-30k per year

### Visitor Attraction General Manager

£22-50k per year



# Inclusive Learning

## What is it about?

For many students, coming to college will be a huge step, a step that moves you from childhood to adulthood and which involves many changes, new responsibilities and freedom. It will mean adjusting to changes, making decisions and gaining a greater independence.

Our Inclusive Learning courses are designed to help you plan for the future and progress to your next step. Small bespoke group learning is delivered by a team of dedicated staff across our three campuses.

We recognise the challenges that our Inclusive Learning students face and we ensure that we provide the right level of support and encouragement to meet each individual's needs.

Whilst on our courses, you will have access to a range of teaching methods, resources and facilities that support your learning journey and progression through to adulthood. Progression could be onto further study, pre-employment provision, directly into employment or on to supported living/community-based options.

Depending on your individual needs and aspirations you may spend your time with us all at one campus or you may progress to one of our other campuses to continue your learning journey. Your course leader will work with you and your family/carers to support you to achieve your potential.

- Delivered at City College Norwich
- Delivered at Easton College
- Delivered at Paston College



## What can I study?

Whatever you're aiming for, we have a variety of study options for you to help you achieve your goal.

### Giving you the skills to do things for yourself and to live with support:

- PAL (Pathway to Adult Life)
- Inspire
- Connect
- Progressions
- Phoenix Purple Independence Pathway
- Get Involved
- Future Choices
- Skills for Life
- Pathway to Independence
- Personal and Social Pathway

### Helping you get into paid work:

- General Enterprise
- Rural Enterprise
- Retail Enterprise
- Hospitality Enterprise
- Multi Enterprise
- Phoenix Purple Employment Pathway
- Ticket (Norwich, Easton & Paston)
- Work Matters
- MINT

### Preparing you for further study:

- Creative Pathway
- Discovery Pathway
- Social & Community Pathway
- Phoenix Purple Vocational Pathway
- Vocational Pathway
- Future Aspirations



MINT is an employment service set up by City College Norwich to support young people (aged 16-25) with learning and employment needs, such as autistic spectrum disorders, mental illnesses, dyslexia, dyspraxia and low self-esteem, to gain sustainable paid employment.

Specialist Employment Job Coaches provide one-to-one support to develop your confidence and employability skills with job applications, interview skills and work experience. They will also help you access training and support to achieve your potential.

Come and see us during our quiet hour, held before our Saturday Open Events.

Book online in advance.



Full course listings at [easton.ac.uk/inclusive-learning](http://easton.ac.uk/inclusive-learning)



Full course listings at [paston.ac.uk/inclusive-learning](http://paston.ac.uk/inclusive-learning)



## Inclusive Learning Lounge

Students with Profound and complex needs have exclusive access to our specialist building.



## Rug Room

Students with Autistic Spectrum Disorders have exclusive access to our RUG Room.



# Apprenticeships



**Apprenticeships provide fantastic career opportunities and allow you to get qualified and earn money at the same time.**

If you are aged 16 and over, an Apprenticeship is an ideal option if you want to continue learning while working or kick start your way into employment. You can be any age over 16 and still get funding too!

We work with around 800 employers to provide Apprenticeships in hundreds of industries, from the largest employers in the country through to small, ambitious businesses that are keen to grow.

We work closely with these employers to deliver training both on and off the job. In most cases, you'll come into College one day a week, as well as working alongside experienced staff to receive planned training and development with a dedicated workplace mentor.

**94%**

stay in work after finishing an Apprenticeship and 47% have received a promotion



## What type of Apprenticeships can I study?

There are four levels of Apprenticeships you can choose from, and the level you do will depend on your qualifications, experience and the type of industry you will work in.

Type of Apprenticeship	Level	Equivalent educational level
Intermediate	2	5 GCSE passes at grades 9-4 or A*-C
Advanced	3	2 A Level passes /Level 3 Diploma /International baccalaureate
Higher	4 and 5	HNC, HND, Foundation degree and above
Degree	6 and 7	Bachelor's or Master's degree

## Find and apply for an Apprenticeship



### Can't find a vacancy that interests you?

You can also find your own employer to hire you as an apprentice. For more information, visit [ccn.ac.uk/how-to-find-an-apprenticeship](http://ccn.ac.uk/how-to-find-an-apprenticeship)

## Develop skills at work

Gain 'on the job' experience as a paid employee. Develop your knowledge, skills and behaviours.

## Get trained

Benefit from 'off the job' training at college to learn new knowledge and skills.

## Meet standards set by employers

Gain specific knowledge and skills by meeting standards set by employers.

## Get paid to train

Earn a salary whilst developing your knowledge, skills and behaviours.

## No debt

Fully funded by your employer and the government so no loans to worry about!

## Progress

There are opportunities to progress on to Advanced, Higher or Degree Apprenticeships or be employed as a full time employee.





# Apprenticeships

For more information please visit [ccn.ac.uk/apprenticeships](https://ccn.ac.uk/apprenticeships)

Subject	Level	Subject	Level
Accounts & Finance Assistant	2	Healthcare Support Worker	2
Advanced Carpentry and Joinery	3	Healthcare Assistant Practitioner (Health Studies) – Foundation Degree	5
Adult Care Worker	2	Healthcare Assistant Practitioner (Mental Health Practice) – Foundation Degree	5
Assistant Accountant	3	Hospitality Team Member	2
Bricklayer	2	Hospitality Supervisor	3
Business Administrator	3	HR Support	3
Carpentry and Joinery	2	HR Consultant & Partner	5
Chef de Partie	3	Information and Communication Technician	3
Chartered Manager	6	Installation & Maintenance Electrician	3
Civil Engineering Technician	3	Lead Adult Care Worker	3
Construction Management HNC (Construction Site Supervisor)	4	Livestock Unit Technician	3
Construction management HNC (Construction Design and Build Technician)	4	Motor Vehicle Service and Maintenance Technician (Light Vehicle)	3
Commis Chef	2	Plumbing and Domestic Heating Technician	3
Customer Service Practitioner	2	Professional Accounting Technician	4
Data Analyst	4	Property Maintenance Operative	2
Dental Nurse	3	Teaching Assistant	3
Digital Marketer	3	Team Leader & Supervisor	3
Early Years Educator	3	Land Based Service Engineer (Easton College)	2
Engineering Operative (Mechanical/Manufacturing)	2	Land Based Service Engineering Technician (Easton College)	3
Engineering Technician (Machinist)	3	Operations & Departmental Manager	5
Engineering Technician - Mechatronic Maintenance Technician	3	Primary Teacher	6
Engineering Technician - Product Design and Development Technician	3	Secondary Teacher	6
Gas Engineering Operative	3	Social Worker	6
General Farm Worker	2	Vetinary Nurse - Small Animal (Easton College)	3
Hair Professional	2		

“ My confidence and interpersonal skills have grown a lot by simply being around colleagues. My technical skills have also developed massively. ”

Niamh Gallagher  
Level 3 Digital Learning  
Design Apprentice



# Degrees & Higher Education

**Our Degree and Higher Education courses are all about taking you to where you want to be.**

We specialise in vocational work-focused Higher Education. All courses have been designed with employers and progression in mind, and many have been developed to ensure our students graduate with the skills required to work in the New Anglia Local Enterprise Partnership's 10 priority sectors.

This means that you will be provided with the skills and qualifications needed to take you further and gain employment or progress your career in growing industries.

**Working in partnership with one of the UK's top universities**

Thanks to our Associate College status, all of our Degrees are awarded by the University of East Anglia (UEA) a UK Top 30 (The Times/Sunday Times 2023), World Top 50 (Times Higher Education Rankings 2022) and World Top 100 for research citations (Times Higher Education World University Rankings 2023).

Every year over 1,000 students chose to study on our Higher Education courses – which includes everything from Higher National Diplomas through to Foundation and Bachelor Degrees. A majority of our students go on to study postgraduate and professional qualifications or move in to relevant employment soon after completing their studies with us.



City College Norwich is a major centre for vocational Higher Education in the region and a great place to study. Our school of Higher Education, Norfolk House, is located right in the heart of Norwich and provides dedicated class, social and study spaces to support you during your studies.

**97%**  
of our full time graduates  
and 100% of our part  
time graduates are in  
employment or further  
study 6 months after  
completing their degree

TEF Metrics 2019, for CCN, published  
by Office for Students 2019)



## Work & study

The taught component of our courses run on one or two set days per week so you can continue to work alongside your studies, reducing financial concerns.

## Lower fees

Our tuition fees start from £8,000 per year. We understand that finances are an important part of the decision to do a higher education course and have kept our fees as low as we can, without compromising on quality, to make the choice easier for you.

## Smaller class sizes

Our smaller class sizes mean you get all the support you need during studies. This is a crucial difference to larger universities and provides you with access to your lecturers when you need them.

## Easton College

Set within 200 hectares of countryside, Easton College provides an outstanding learning environment for HE students with specialist industry standard facilities for agriculture and land based studies, animal studies, equine studies and sport. These include an operational farm, equestrian centre and innovative animal management centre.



**“ I am so thankful that I studied my degree at City College Norwich, I learned so much from the incredibly knowledgeable and passionate lecturers ”**

Jasmin Roache  
Studied BA (Hons) English student



## Course essentials:



### Level 3/4

Art & Design Foundation  
Media Learning Company



## Careers

### Video Editor

£18-45k+ per year

### TV/Film Producer

Variable

### TV/Film Camera Operator

Variable

## Industry Experts

Our staff are experts who have extensive industry experience & excellent local/national contacts in the industry

# Art Foundation & Pre-Degrees

**Pre-Degree Foundation Diplomas are designed to provide you with a broad range of skills and experiences that will help you progress on to a university level degree or start your career in the creative industry.**

### What is it about?

Foundation Art & Design will help you identify your strengths and develop skills in a wide range of artistic disciplines before you start your university level degree or enter employment.

The Media Learning Company is a client-facing production company based within the College, where you work with local and national clients to devise and develop media content.

### What will I do?

On the Foundation Art & Design course you are exposed to a wide range of creative practices; from life drawing, welding and ceramics to digital design, print and film. This broad-based approach encourages creative risk-taking and collaborative working.

If you join the Media Learning Company you will be client-facing throughout your course, working with major clients such as Norfolk Wildlife Trust and Mercedes Benz to produce content and provide events management.

### Progression

Students develop the skills, experience and expertise to follow successful careers in the creative industries. The majority of students progress onto university and art school, however, a growing number are involved in creative start-ups and freelancing.

### Is it suitable for me?

If you are ambitious, prepared to take creative risks, work well with others and strive for the best possible results, a Foundation Diploma could be for you!

### Professional standard facilities

Develop your skills using our state of the art creative arts facilities including full HD TV studio, PC editing suites and 3D and Print/Dye workshops



### Amy

Studying:

**Media Learning Company (2019)**

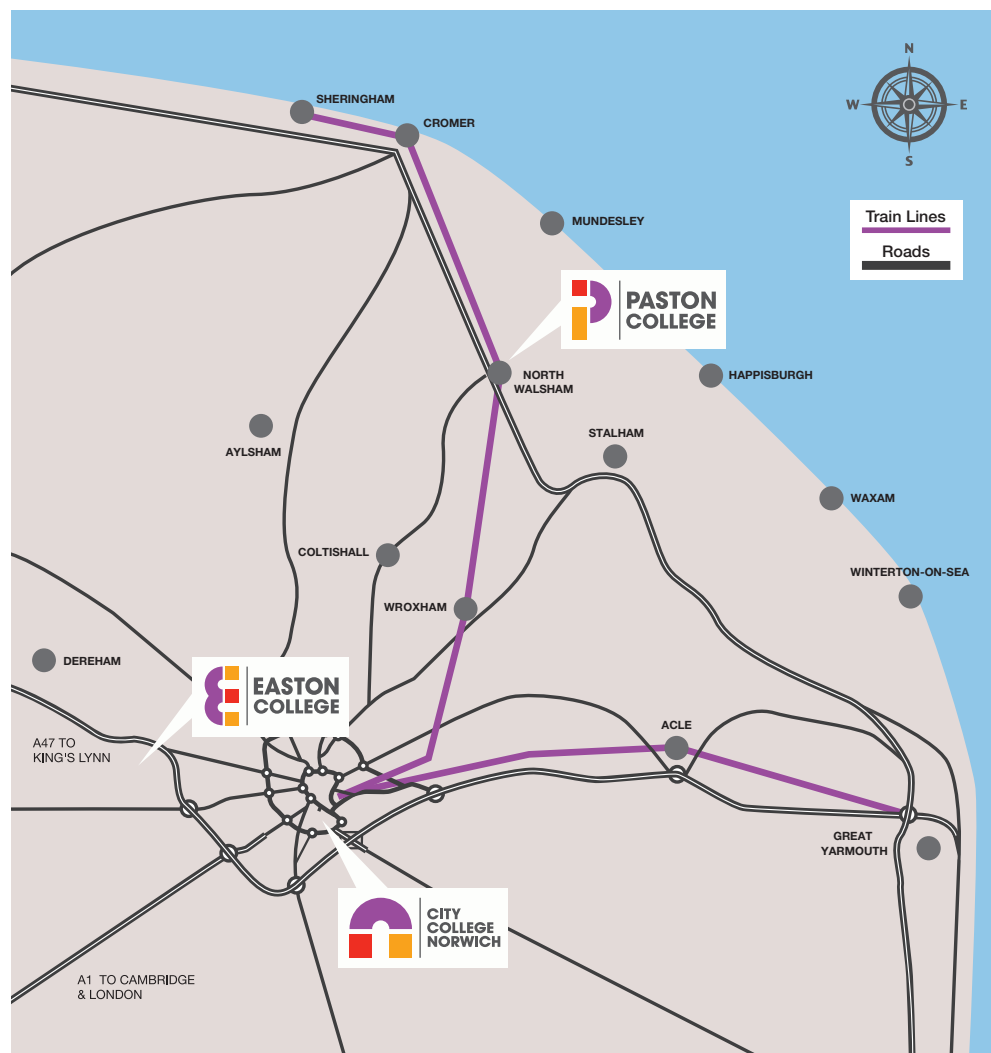
Currently:

**Assistant Director for new live action Disney film, Cruella**

"The course gave me access to industry standard equipment and enabled me to create professional, high-quality content. It encouraged me to be confident and accomplish things I didn't think would be possible."



# Travelling to College

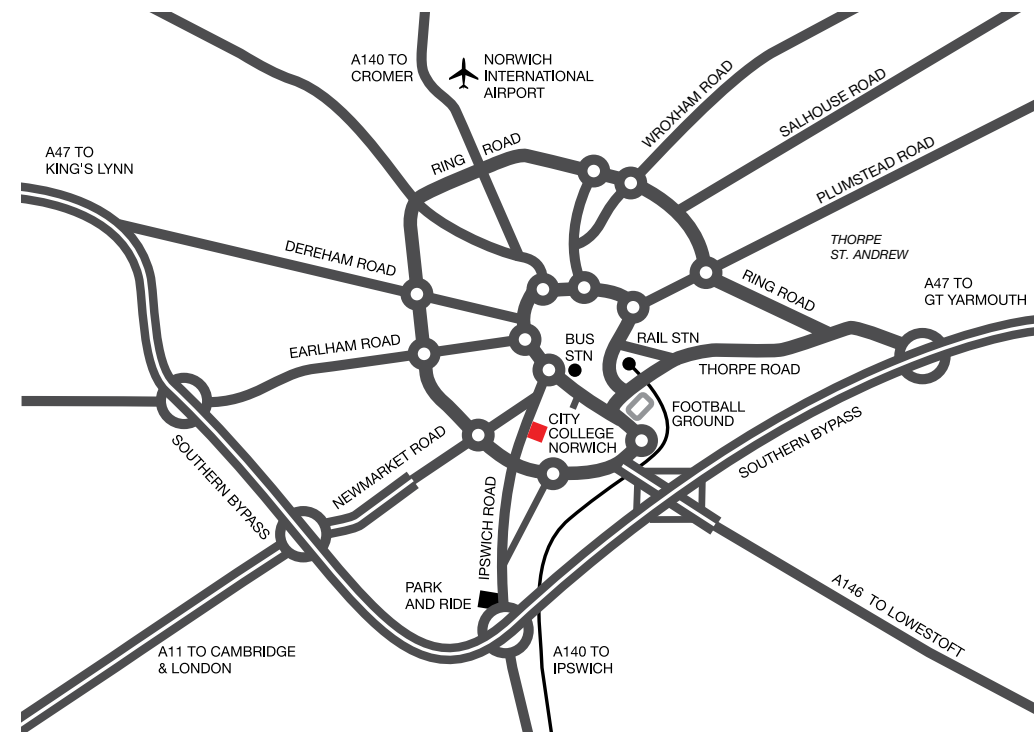


## Got a question about travel?

Get in touch with the Travel Plan Officer  
at [citytravel@ccn.ac.uk](mailto:citytravel@ccn.ac.uk)  
or 01603 773 607

## Find out more...

Visit [ccn.ac.uk/travel](http://ccn.ac.uk/travel) for the  
most up to date information



**The main college campus is located on the Ipswich Road approximately half a mile from the city centre.**

**From the St Stephen's Street roundabout (near the bus station), follow the signs to Ipswich. A few hundred metres south of the roundabout the A11 and A140 divide; take the left fork (A140) and the College is about 300 metres further along on the left.**

### By bus

Discounted bus passes are available to all College students. Visit [ccn.ac.uk/travel](http://ccn.ac.uk/travel) for the most up-to-date prices and to find out more.

### By train

The main Norwich Train Station is located about 1.5 miles from the College. First Bus and Konectbus operate frequently between the Rail Station and the City Centre which is about a 8-10 minute walk away from College. First Bus have regular buses that service the Train Station to Castle Meadow (Blue Line).

The timetables for First Buses can be found on [www.firstgroup.com/norfolk-suffolk](http://www.firstgroup.com/norfolk-suffolk)

### Park & Ride

The Park & Ride routes covering our Ipswich Road campus are:

- Harford Park & Ride
- Sprowston Park & Ride

Airport and Thickthorn P&R sites operate to Newmarket Road/Town Close Road which is a five minute walk. Postwick P&R operates to St Stephens Street in the city centre which is an eight minute walk.

Routes run Monday to Saturday with arrivals in the city before 7am. The last bus is approximately 7pm depending on the site. A 16-19 (no ID required) day ticket is £2. More fares and information is available at [www.norwichparkandride.co.uk](http://www.norwichparkandride.co.uk)



# Progression & careers after College

City College Norwich is a big and important step in your journey and we focus from your first day on making sure that, together, you get where you want to go.

Whether it's university level study, or a career with amazing opportunities – our courses can help get you where you want to be.

Every year, our students see a whole new world of possibilities opening up, and we can do the same for you.



## Degree level study

Our A Level and Level 3 courses have allowed our students to progress on to over 50 different universities including Oxford, Cambridge and a range of other universities including specialist art and performing art institutions.

Students have also chosen to study degree level courses closer to home. City College Norwich and Easton College have a wide range of Degree and Higher Education courses that provide you with the skills and experience needed to develop your career.

Visit [ccn.ac.uk/degrees](https://ccn.ac.uk/degrees) or [easton.ac.uk/degrees](https://easton.ac.uk/degrees) to find out more.

## Employment

Our students have progressed on to a wide range of amazing opportunities with employers locally, nationally and, in some cases, internationally after completing their courses.

In recent years, we have seen students leave college to work as Assistant Director for Disney, Head Chef at vegan restaurant Erpingham House, Lettings Negotiator for Countrywide, Spa Therapist for the cruise ship industry and Outdoor Sports Instructor at Raquette Lake Camps in upstate New York, USA.



## Apprenticeships

Apprenticeships provide fantastic career opportunities at all levels and allow you to get a qualification and earn money at the same time.

City College Norwich and Easton College work with hundreds of employers to provide Apprenticeships and Higher and Degree Level Apprenticeships in a variety of specialisms.

Visit [ccn.ac.uk/apprenticeships](https://ccn.ac.uk/apprenticeships) or [easton.ac.uk/apprenticeships](https://easton.ac.uk/apprenticeships)

## Pete Blaxill

Studied: **Production Arts** (2013)

Currently: **A sound engineer for TV and film.**

"Without City College Norwich, I certainly wouldn't have got to where I am today."



Working on the set of *Fantastic Beasts: The Crimes of Grindelwald*



# Preparing for your future career

Unlike at school,  
real experience of  
work is a key part  
of every student's  
programme  
of study.

**Whatever your career goals we are here to help you get to your next stage. That might be getting your perfect first job, securing a place at university or simply learning and developing while you keep your options open.**

## Employability & interview skills

In addition to developing course specific skills and knowledge, we will also support you to develop key attributes that are valued by employers. These include communication skills, helping you to become a problem solver, increasing your business and customer awareness, managing your time effectively and helping you to develop a positive, confident attitude.

We also provide opportunities for practice interviews, working on your CV and learning how to go about finding a job. All the advice and support you need to be job ready, and successful at interview, is right here.



## Experience of Work

**We bring students and employers together to give you a first hand understanding of particular industries and job roles.**

The experience of work you get will depend on your course and level, but all students are given opportunities to develop the skills valued by employers.

## Some of the ways you could gain experience of work with us:



### Industry placements

Regular, ongoing work experience with an employer, which may last for a term or more. Some courses require you to do a set number of hours in order to pass the course. Students on T Level courses will complete 315 hours of industry placements.



### Employer talks & networking

Employers regularly meet with students to talk about what it's really like to work in their sector, answer questions and give you the information you need to reach your career goals.



### Live briefs

There are also opportunities to work on projects for an employer. We call these live briefs because they are not just exercises, but real projects where employers will use the outcomes from your work – great experience and a positive addition to any CV or portfolio.



### Work experience

Shorter periods of time spent working with an employer to gain experience in job roles that you could be doing in the future. We offer lots of unique and exciting opportunities, including our 'Student Takeover' of hotels in the city.



### Site & workplace visits

Visits to relevant employer sites take place throughout the year. This can be anything from major building projects (Construction) and airline visits (Travel & Tourism), to law courts (Law), prison (Public Services) and the Harry Potter Studio Tour (Games Design).

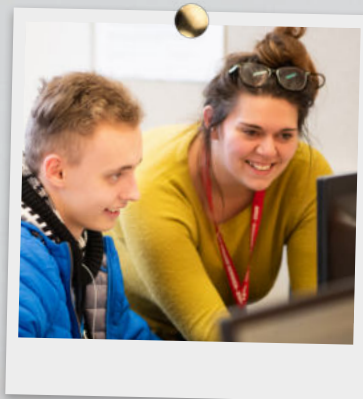




# Supporting your studies

We care about your future, that's why we have a friendly and professional advice team offering information and support on careers, finance, travel and more.

Our team are here to provide you with the support and advice you need to focus on your studies and make your time with us as enjoyable as possible.



## the Library

### The Library

Our college library, the Information Store, provides access to a fantastic range of resources to help you with your studies.

This includes books, use of computers, printers and photocopying. Learning Facilitators are also available to provide one-to-one help to support your studies.

Visit: [ccn.ac.uk/information-store](https://ccn.ac.uk/information-store)



### Travel

Our students enjoy discounted travel from Norfolk County Council, discounts with Greater Anglia and exclusive deals with bus companies, saving you money travelling to and from the College. Find out more on page 40.

Visit: [ccn.ac.uk/travel](https://ccn.ac.uk/travel)

### Finance

Student Advisers provide accurate and confidential advice about bursaries and free college meals.

To discuss this with us, contact **01603 773 773**, or [financialadvice@ccn.ac.uk](mailto:financialadvice@ccn.ac.uk)

Visit: [ccn.ac.uk/finance](https://ccn.ac.uk/finance)

### Careers

Our qualified advisers offer a range of careers services for City College Norwich students, including:

- 1:1 guidance appointments
- help with CV writing
- job and Apprenticeship applications
- interview preparation
- support in applying for higher education and university

We also run careers fairs and inspirational talks and discussions from local and national employers, to help you prepare for the world of work.

Visit: [ccn.ac.uk/careers](https://ccn.ac.uk/careers)

## the advice shop

We offer expert impartial advice and guidance for anyone considering their career, education and training options. This free service is available to both existing students and young people and adults across Norfolk.

For more information contact **01603 773 773** or [information@ccn.ac.uk](mailto:information@ccn.ac.uk)

Visit: [ccn.ac.uk/student-services](https://ccn.ac.uk/student-services)



# Industry & work placements

## An excellent opportunity for you to:

- put your new knowledge into practice
- further develop your technical and employability skills
- build confidence
- identify your strengths and preferences for your future career
- develop a deeper understanding of the working world in your chosen industry
- gain a full and more meaningful employer reference to help you secure future employment or an Apprenticeship.



## Gaining work experience in your chosen area of study is important to help boost your employability after college.

### What work placement options are available?

Some courses have a work placement unit. For example, students studying T Levels are required to take part in industry placements with employers in the local area. All students take part in work experience activity including placements or employability skills.

### How do I secure a placement?

We will encourage you to find your own placement but have a dedicated team who are able to support you with this. You will meet the team during your enrolment period at college who will also support you in preparing for employment through mock interviews and CV development.

### When will I do them?

Most placements will take place during a normal working day but, depending on what you're interested in, your placement may involve working evenings or weekends to give you a real taste of that industry. They can work on a day release basis throughout the year or in larger blocks during the spring and summer terms.

### How is my work during the placement recorded?

During the first few weeks you will be introduced to our online system where you can manage your work placement. This includes logging work experience hours, experiences and tasks.

### How long will they last?

Placements can vary in length depending on the course timetable and employer. T Level industry placements will last for a minimum of 315 hours.

### Is there any financial help available?

You can apply for a contribution towards additional costs incurred as part of your experience such as travel, PPE or any specialist equipment that might be required.



# Solid support whatever your needs

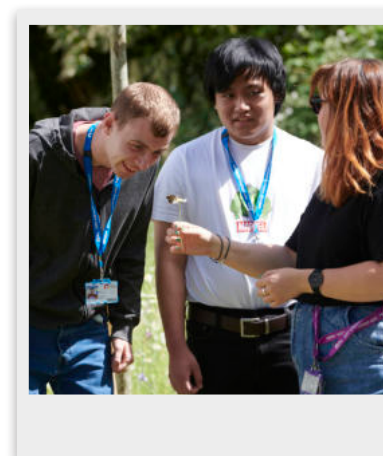


Mint is an employment service set up by City College Norwich to support young people (aged 16-25) with learning and employment needs to gain sustainable paid employment. Specialist Employment Job Coaches help young people access innovative training ideas, and consistent support tailored around the individual, to help students achieve their potential.

MINT helps students with a wide range of learning and employment needs including autistic spectrum disorders, mental health, dyslexia and dyspraxia. An employment job coach will provide one-to-one support and help students develop confidence and employability skills in areas such as job applications, interview skills and work experience.

We encourage high aspirations for personal development, and participation in functional skills to build on their previous Maths and English qualifications.

Ofsted rated  
our provision  
for learners with  
high needs as  
Outstanding



Visit: [ccn.ac.uk/wellbeing](https://ccn.ac.uk/wellbeing)



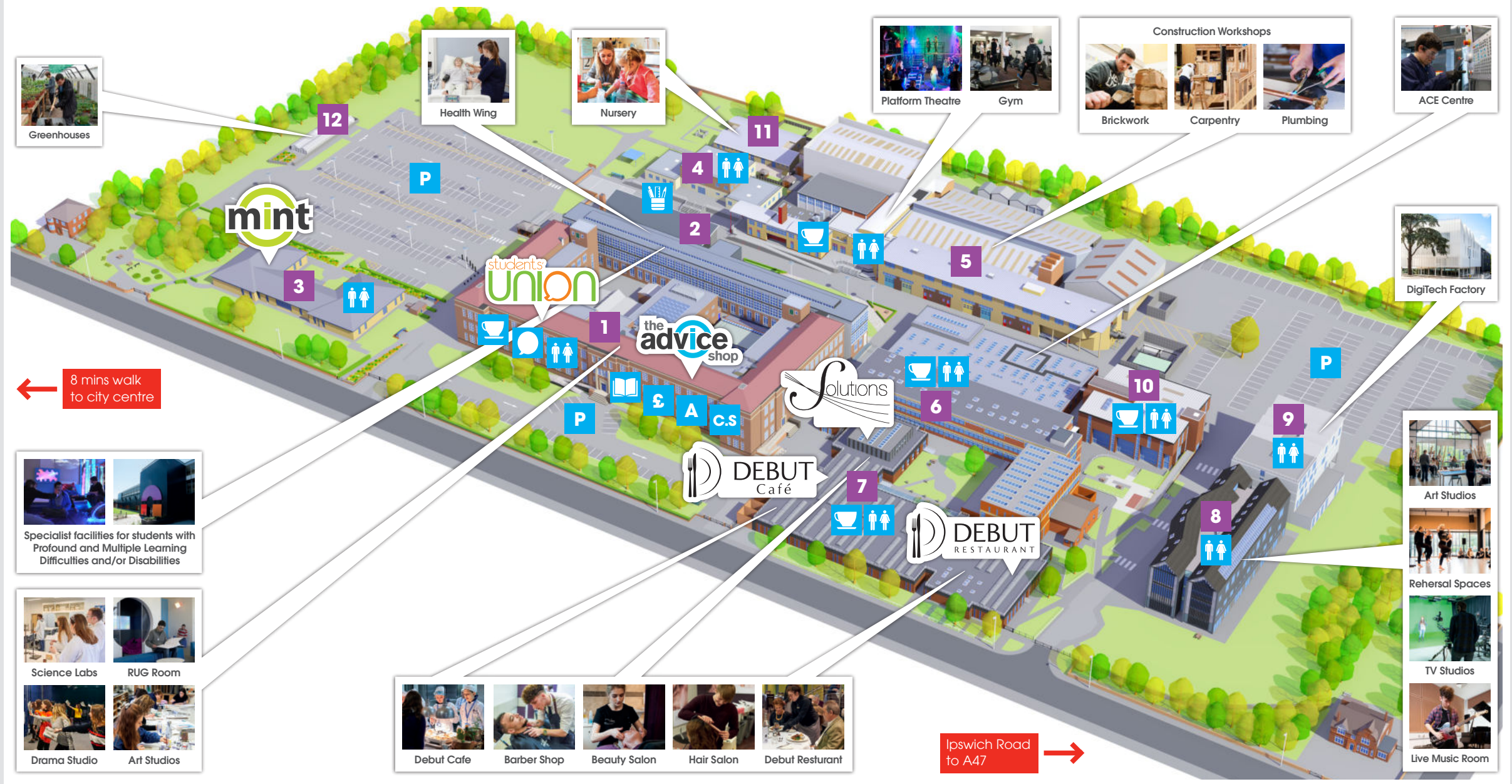
The Wellbeing Team offer free, impartial and confidential advice to support you with any matter that might be affecting you.

The Counselling Team offer 6 confidential sessions of free Integrative Counselling.

The Education Support Work team offer personalised co-ordinated support to students who are in care or care experienced or who have caring responsibilities at home.

Our Mental Health Adviser specialises in supporting students who are also being supported by NHS Mental Health Services.





## Buildings:

- |                               |                                 |                            |
|-------------------------------|---------------------------------|----------------------------|
| <b>1</b> Norwich Building     | <b>5</b> Norfolk Building       | <b>9</b> Digi Tech Factory |
| <b>2</b> PMLD Building        | <b>6</b> Blakeney Building      | <b>10</b> Wroxham Building |
| <b>3</b> Lewis Building       | <b>7</b> Cromer Building        | <b>11</b> Nursery          |
| <b>4</b> Happisburgh Building | <b>8</b> Creative Arts Building | <b>12</b> Greenhouses      |

## Facilities:

- |                                      |                                |               |
|--------------------------------------|--------------------------------|---------------|
| <b>A</b> Advice Shop                 | <b>☺</b> Toilets               | <b>☕</b> Cafe |
| <b>📖</b> Information Store & Library | <b>c.s</b> Curriculum Services |               |
| <b>📝</b> Scribbles Stationery        | <b>P</b> Parking               |               |
| <b>🗣️</b> Students' Union            | <b>£</b> ATM                   |               |



# Easton College Courses



Take a look at the exciting options available to you at Easton College:

## Access to Higher Education

Criminal Justice & Policing  
Land Based Studies

## Agriculture

Agriculture  
Land Based Studies

## Agricultural Engineering

Land Based Engineering

## Animal Studies

Animal Care  
Animal Management  
Dog Grooming  
Land Based Studies (Animal)

## Arboriculture - Forestry & Tree Care

Forestry & Arboriculture

## Construction

Painting & Decorating

## Degrees & Higher Education

Animal Science  
Professional Policing  
Public Sector Leadership

(Crime, Strategy & International Relations)  
Sport, Health & Exercise Science  
Wildlife & Conservation  
Zoology

## Environmental Conservation & Countryside Management

Land & Wildlife Management

## Equine Studies

Equine Care  
Equine Management  
Land Based - Equine

## Floristry

Floristry

## Horticulture

Horticulture

## Inclusive Learning

These courses help you to progress to your next steps through our bespoke small group programmes delivered by a team of dedicated staff.

Visit: [easton.ac.uk/inclusive-learning](http://easton.ac.uk/inclusive-learning) to find out more.

## Outdoor Leadership

Outdoor Leadership

## Sport

Sport Performance & Excellence  
Sport Coaching & Development  
Fitness Services  
Sport and Exercise Science

## Uniformed Services

Uniformed Services

## Apprenticeships

Bricklaying  
Carpentry & Joinery  
General Farm Worker  
Land-Based Service Engineering  
Livestock Unit Technician  
Property Maintenance  
Veterinary Nurse





# Paston College Courses



Paston College has a strong history of high achievement which sees students progress on to university, employment and apprenticeships. We offer expert teaching, guidance and support to help ensure you achieve your aspirations.

Take a look at the exciting options available and choose the right course for you!

## A Level programmes

Biology  
Business  
Chemistry  
English Language & Literature  
English Literature  
Environmental Science  
Art & Design - Fine Art  
French  
Geography  
Graphic Communication  
History  
History of Art  
Law  
Further Maths  
Mathematics  
Film Studies  
Media Studies  
Drama & Theatre Studies  
Philosophy, Religion & Ethics  
Photography  
Physical Education  
Physics  
Politics  
Sociology  
Textile Design

## Career focused courses

Level 3 Applied Psychology  
Level 3 Art and Design  
Level 3 Computing  
Level 3 Criminology  
Level 3 Health & Social Care  
Level 2 Creative Media Production  
Level 3 Creative Media Production  
Level 3 Medical Science  
Level 3 Sport & Exercise Science

### Discuss your options with our friendly Advice Shop

Our advisers offer free advice and guidance to help you make the right choice.

Contact our advisers in the Advice Shop at Paston College on **01692 668 080** or **pastoninfo@ccn.ac.uk**

## Inclusive Learning

Multi Enterprise  
Ticket Paston

## T Level

Business  
Management Administration:  
Team Leadership & Management  
Education & Early Years





# Leisure Learning

More  
courses  
coming  
soon

## Explore a hobby, hone a skill, find a passion.

We all have that one hobby or skill we've always wanted to try, but never quite got around to. Here at City College Norwich, we can help you start your journey with our Leisure Learning courses.

We offer a wide range of part time and evening courses for adults looking to learn something new, develop their skills, and meet new people.

Whether you'd like to cook up a storm, exercise your creativity with photography or art, or are interested in floristry or bee keeping – we're sure to have a course to suit you and your interests.

Delivered by both our in-house expert teaching staff and external specialists we ensure your new hobby has the best possible start. You will be provided with an outstanding learning experience and access to our fantastic facilities.

Courses are held at our Ipswich Road and Easton campuses, ensuring you will be provided with an outstanding learning experience, and access to our cutting edge facilities.

Find out more at:  
[ccn.ac.uk/leisure](http://ccn.ac.uk/leisure)  
[easton.ac.uk/leisure](http://easton.ac.uk/leisure)  
[paston.ac.uk/leisure](http://paston.ac.uk/leisure)



### Course costs

All courses are priced individually.



# Professional Development

## Our College works with hundreds of local businesses to help them grow and support the development of their workforce.

We deliver a wide range of training courses and qualifications for both businesses and individuals who want to improve their skills or retrain in areas such as health and safety, licensing, accounting, teaching, business skills, electrical and hair and beauty.

We also deliver many short professional courses at our Easton Campus to help you improve your knowledge and skills in pesticides, arboriculture, tractor driving, dog grooming and more.

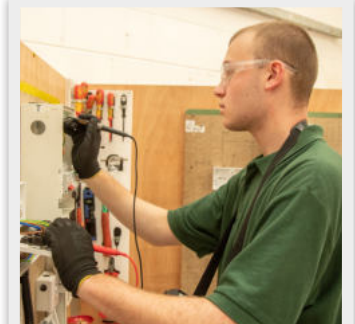
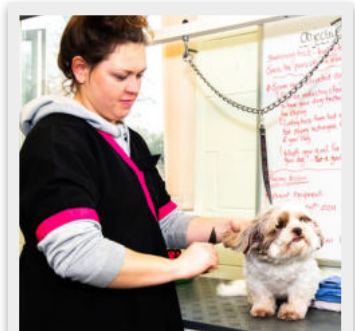
We pride ourselves on offering courses that are flexible and tailored to your business needs. We also offer options for bespoke training solutions.



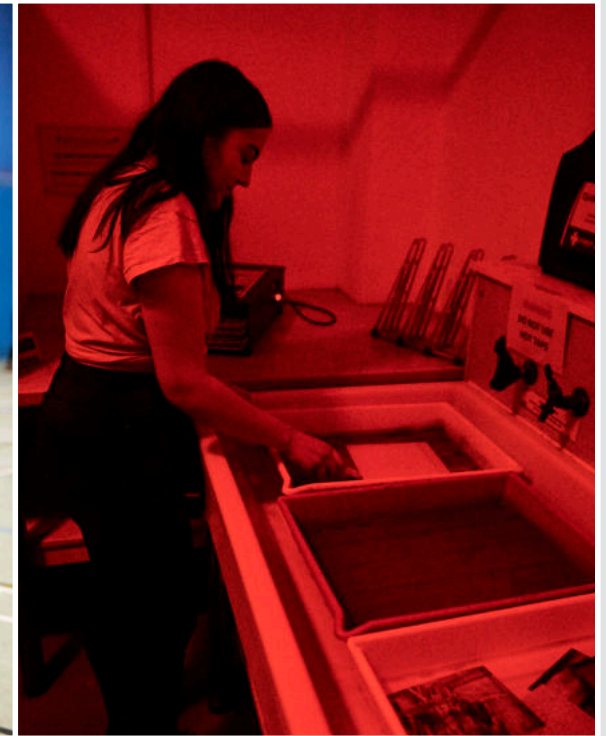
### Course costs

All courses are priced individually.

Find out more at:  
[ccn.ac.uk/professional-development](http://ccn.ac.uk/professional-development)  
[easton.ac.uk/professional-development](http://easton.ac.uk/professional-development)









# How to apply

## Got a question about your application?

Get in touch with our Admissions Team at City College Norwich via [admissions@ccn.ac.uk](mailto:admissions@ccn.ac.uk) or 01603 773 008

### STEP 1

#### Apply

Complete your application online. We accept applications throughout the year but we recommend that you apply as early as you can.

### STEP 2

#### Interview

You'll be invited to attend an interview and/or taster day. These take place throughout the year and an invitation will be sent to you.

### STEP 3

#### Offer

We'll get in touch shortly after your interview or taster day with an official offer.

Get in touch to accept and confirm your place.

### STEP 4

#### Enrol

You will be invited in to meet your tutor and provided with full details of your course before enrolling with a member of our Registry team. You'll receive your enrolment invitation by mid-August.

## Apply online

Visit [ccn.ac.uk](http://ccn.ac.uk)

## International students

If you have come to live in the UK from overseas and would like to study here, please contact our International Adviser at [international@ccn.ac.uk](mailto:international@ccn.ac.uk) or +44 (0)1603 773 798 for help and guidance on how to apply.

## Apply by post

Collect an application form from the Advice Shop at City College Norwich.

### Return the form to:

Admissions,  
City College Norwich,  
Ipswich Road,  
Norwich NR2 2LJ

## Keep your options open

We advise you have a back up plan and apply for two courses. You will only get a 1<sup>st</sup> choice interview to start with, please contact admissions to request a 2<sup>nd</sup> choice interview.

## Apply early

Our courses fill up quickly!

Get your application in early to avoid disappointment. You can apply from 2 October 2023

## Interested in Apprenticeships?

There's a different process for Apprenticeships: find out more at [ccn.ac.uk/apprenticeships](http://ccn.ac.uk/apprenticeships) and see page 92 for more.





# Contact us

## **City College Norwich**

City College Norwich  
Ipswich Road  
Norwich  
NR2 2LJ

**t: +44 (0)1603 773 311**

**e: [information@ccn.ac.uk](mailto:information@ccn.ac.uk)**

**[www.ccn.ac.uk](http://www.ccn.ac.uk)**

# Find us on social media



[@norwichcollege](https://twitter.com/norwichcollege)



[@citycollegenorwich](https://www.instagram.com/citycollegenorwich)



[citycollegenorwich](https://www.facebook.com/citycollegenorwich)