



City College Norwich

# Sixth Form Centre

For entry September 2026

# Welcome to City College Norwich!

**We are here to support and work with you as you move towards your chosen future. Whatever your aims and aspirations, City College Norwich (CCN) Sixth Form Centre is committed to helping you achieve them.**

The Sixth Form Centre is part of our City College Norwich campus on Ipswich Road, and every year hundreds of students choose to study their A Levels with us. CCN Sixth Form Centre offers much more than a traditional sixth form. You will enjoy unrivalled student experiences, outstanding opportunities and support in a mature learning environment that is very different to being in a school setting.

At CCN Sixth Form Centre, we put you in control of your future. We offer you the best opportunities to learn and succeed on your course, and progress beyond college. This could be going on to study for a degree, getting a job and starting your chosen career, securing an Apprenticeship, or simply growing in confidence and independence.

Everything at our Sixth Form Centre is set up to help you reach your desired destination. We have expert staff who are not only committed teachers but who bring a wealth of academic and industry knowledge into our subject areas. Your learning will take place in our dedicated sixth form classrooms, supported by our strong links with hundreds of local and national employers providing industry experience.



We also understand that you want to enjoy your time at college. You will be treated as an adult and given real independence and responsibility for your learning. With an active Students' Union, on-site cafés to socialise in, and a range of extra-curricular activities on offer, there's lots of opportunities to socialise alongside your studies.

If you've not visited us already, we look forward to welcoming you so that you can discover for yourself all that CCN Sixth Form Centre has to offer. We pride ourselves on being an inclusive sixth form, so come and get a feel for what it's like to study here and ask us any questions you may have.

A stylized, handwritten signature of Jerry White in white ink.

**Jerry White**  
Principal

## Contents

### A Level Subjects

Art	14
Biology	15
Business	16
Chemistry	17
Drama and Theatre Studies	18
English Language	19
English Language and Literature	20
English Literature	21
Environmental Science	22
Film Studies	23
Further Maths	24
Geography	25
History	26
Maths	27
Media Studies	28
Photography	29
Physics	30
Politics	31
Psychology	32
Religious Studies (Philosophy and Ethics)	33
Sociology	34
Textiles	35
Extended Project Qualification	36

*All information included in this prospectus is correct at the time of print in August 2025 but subject to change. For the most up-to-date information, please visit our website at [www.ccn.ac.uk](http://www.ccn.ac.uk)*

Your study options	4
Your A Level programme	6
Three colleges	8
About City College Norwich	10
A Level subjects	13
How to apply	38
What will my day look like?	40
College facilities	42
Supporting your studies	44
Travelling to college	46
Campus map	48
Student life	50
Ways of Working	51
All college courses	52 - 55
Media Learning Company	56
Adult courses	57
Access to Higher Education	58
Degrees	59
Connect with City College Norwich	60
Open Events	61



# Your study options

We understand how important it is to find the best route for you after leaving school. It is important to think about the subjects you enjoy, how you like to learn and where you want to progress to after college.

There are four main options you can choose from after your GCSEs. The CCN Sixth Form Centre specialises in offering A Levels, but you can also explore other options at City College Norwich, Easton College and Paston College.

## Which route is for me?

### A Levels

At City College Norwich Sixth Form Centre and Paston College

A Levels are a popular choice for those aiming for university. They provide in-depth study in specific subjects, with students typically choosing three subjects to make up a full-time programme over two years. Each A Level is equivalent to a Level 3 qualification and provides UCAS points. Turn to the next page to find out more.

### T Levels

At City College Norwich, Easton College and Paston College

T Levels blend academic study with practical learning, with a big emphasis on providing in-depth industry experience. They include an industry placement of around 45 days, providing valuable experience in the workplace where employers get early sight of the new talent in their industry. They are equivalent in size to three A Levels, and you will be assessed through a combination of exams and employer-set projects. Many T Level students progress to university or onto higher level apprenticeships.

### Apprenticeships

At City College Norwich and Easton College

An apprenticeship is a job where you will earn, combining work with training and study. You will usually spend one day a week at college and the rest with your employer. Apprenticeships start at Level 2 and go all the way up to degree-level, so you can start straight from school or later in your learning journey. You will need to find an employer to take you on as an apprentice, with many actively hiring, it's a simple step in the process. Find out more about apprenticeships: [www.ccn.ac.uk/apprenticeships](http://www.ccn.ac.uk/apprenticeships).

### Career-focused qualifications

At City College Norwich, Easton College and Paston College

Technical and vocational qualifications such as BTECs offer a blend of classroom study and practical learning. You will choose one subject to study full time, and each subject focuses on a specific job or employment area, such as health and social care, engineering or hairdressing. The level you start on will depend on the grades you achieve at school. While there may be some written exams, these courses also involve practical assessments, coursework, and work-based evidence.

For some students who are not yet at the stage to access wider college courses or have barriers to learning or employment, alternative routes are also available. These can support you to move into wider college courses, apprenticeships and employment. These include:

### Inclusive Learning and MINT

City College Norwich, Easton College and Paston College

Designed to help you plan for the future and progress onto your chosen next step. Our courses are divided into four pathways to help you settle into college and prepare for living in your community, going out to work or progressing onto further college courses. Find out more on our website: [www.ccn.ac.uk/inclusive-learning](http://www.ccn.ac.uk/inclusive-learning)

### Aspire Skills Academy

City College Norwich

Choose from two pathways where you can either experience taster sessions in your chosen vocational area and prepare to progress to further study, or develop your employability skills and prepare for the world of work. These courses have several enrolment points throughout the year, for more information speak to our Advice and Guidance team.

### Academic Progression

Paston College and City College Norwich

Where you will study new or additional GCSEs to help you develop your skills and gain the grades you need to progress to your chosen pathway the following year. This programme can also support you to retake your English and maths GCSEs if you didn't quite achieve the grades needed. Find out more on our website: [www.ccn.ac.uk/academic-progression](http://www.ccn.ac.uk/academic-progression).

### English for Speakers of Other Languages

City College Norwich

To help develop your speaking, listening, reading, writing and grammar skills before progressing onto your chosen pathway. Find out more: [www.ccn.ac.uk/esol](http://www.ccn.ac.uk/esol)

### Need help deciding what to apply for?

Our Advice and Guidance team can talk through all the options with you. Get in touch by emailing [information@ccn.ac.uk](mailto:information@ccn.ac.uk) or call 01603 773773. You can also speak to them at one of our Open Events!





# Your A Level programme



**A Levels are a popular choice for those aiming for university. They provide in-depth study in specific subjects, with students typically choosing three subjects to make up a full-time programme completed over two years.**

A Levels are assessed through exams. Each A Level is equivalent to a Level 3 qualification and provides UCAS points which you can use to apply to university or another type of higher education. They are also a great option if you are not sure what career or job you want to do as studying a selection of A Levels can be a good way of keeping your options open.

A Levels at CCN Sixth Form Centre cannot be combined with other vocational or technical courses which form a full-time programme of study. If you are interested in exploring different study options, visit: [www.ccn.ac.uk](http://www.ccn.ac.uk)

## More than just A Levels

Your time at CCN Sixth Form Centre is about much more than gaining a qualification. You will be treated as an adult and an individual and will be supported to explore your passions and interests. You will be encouraged to take advantage of all City College Norwich has to offer, from trips and events to clubs and societies.

You will be provided with excellent progression routes to take you wherever you want to be, whether that's university, starting an apprenticeship or entering full time employment. You can also continue your studies close to home with City College Norwich Higher Education. See page 58 to find out more.

## Overall Sixth Form entry requirements

You will need to have a strong GCSE foundation to be prepared for this next level of study which is why you must achieve our overall Sixth Form entry requirements. You will need to have achieved at least six subjects at grade 4 or above, with at least four of these at grade 5 or above.

Many of our A Level subjects have their own specific entry requirements which can be found on each of our course pages. You also need to achieve these to study that course. These will be discussed with you at your interview.

## Need help deciding what courses to apply for?

Our Advice and Guidance team can talk through all the options with you, discuss the grades needed and support you to find the most appropriate combinations of subjects based on your aspirations after college. Get in touch by emailing [information@ccn.ac.uk](mailto:information@ccn.ac.uk) or call **01603 773773**. You can also speak to the team at one of our Open Events!





# Three colleges with the widest offer



**Working in collaboration, City College Norwich, Easton College and Paston College offer the widest range of courses across Norfolk. Providing A Levels, technical and vocational qualifications, T Levels, Apprenticeships, degrees and more, our three distinct campuses offer the opportunity for students to learn in the environment most suited to them.**

**Each year we support around 10,000 students, including 1,500 apprentices and 800 learners with an education, health and care plan (EHCP). We pride ourselves on being an inclusive college, led by experienced and specialist staff.**

## Here's a taste of what each of our colleges have to offer:



### **Construction Skills Hub – City College Norwich**

The £4.4 million Construction Skills Hub, opened in March 2025, features two large plumbing and electrical workshops across two floors. Each workshop has 10 practical bays and large central workbenches. The hub plays a key role in training the next generation of electricians and plumbers to meet the growing demand for skilled workers.



### **Digi-Tech Factory – City College Norwich**

A unique facility that is purpose-built for teaching the latest digital skills, from coding and hardware to advanced manufacturing, animation and games design, media production, construction and engineering design.



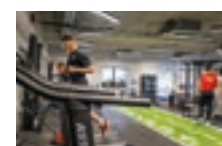
### **Health Wing – City College Norwich**

Our modern hospital ward features lifelike simulators providing healthcare students with opportunities to develop their skills in patient care. The Health Wing also has a 3D anatomy visualisation and virtual dissection table, which is one of very few in the country.



### **Animal Management Centre – Easton College**

Approved as an educational member of the British and Irish Association of Zoos and Aquariums (BIAZA), our centre gives students the chance to work with small mammals, reptiles, birds, and endangered aquatic species.



### **Centre of Excellence for Sport – Easton College**

Following a £1.7m refurbishment, our Sports Centre includes upgraded fitness suites, an outdoor leadership classroom, and a sports performance lab. These complement our Equestrian Centre, 3G pitches, and Tennis Centre with eight indoor hard courts and four European red courts used for international events.



### **Easton Farm and Estate – Easton College**

160 hectares of nature-based teaching space managed with conservation, sustainability and environmental considerations, including a mixed farming system with beef, sheep and cereal production which complement each other.



### **Griffon Theatre – Paston College**

Home to our performing arts and drama courses and The Paston Far East Theatre Company, the Griffon Theatre boasts the latest digital sound, lighting and production technology, a cyclorama and movable seating to enable 'in the round' style theatre.



### **Scarborough Science Centre – Paston College**

Paston College has an outstanding reputation in science. £1.5m was invested into the Scarborough Science Centre to provide students with state-of-the-art facilities and expanded lab space, all built to industry standards.

# About City College Norwich



**Over  
130  
years**

of educational  
excellence since opening  
our doors in 1891



Largest Apprenticeship  
provider in Norfolk, with  
1,350 Apprentices in  
2023/24



One in three Norfolk  
students aged 16 to  
18 study across City  
College Norwich, Easton  
College and Paston  
College each year



Over 100 different  
nationalities among  
our students



High achievement and  
progression rates  
across A Levels,  
T Levels, vocational and  
technical qualifications



A Students' Union to  
represent the voice and  
interests of students  
with opportunities to  
represent your peers  
as a member of the  
Executive Officer team

**£20m**

invested in our student  
facilities including  
teaching spaces, our  
new Construction Skills  
Hub and refurbishment  
of the Library and  
Wellbeing Hub



Rated Ofsted 'Good'  
following an inspection  
in November 2024, with  
our provision for learners  
with high needs rated  
'Outstanding'

# Subjects

Art  
Biology  
Business  
Chemistry  
Drama and Theatre Studies  
English Language  
English Language and Literature  
English Literature  
Environmental Science  
Film Studies  
Further Maths  
Geography  
History  
Maths  
Media Studies  
Photography  
Physics  
Politics  
Psychology  
Religious Studies (Philosophy and Ethics)  
Sociology  
Textiles  
Extended Project Qualification



# A Level

## Art



Scan the QR code to learn more

### What you will study

A Level Art offers the exciting opportunity to explore your creativity, develop your artistic skills, and express unique perspectives. This course is designed for those who are passionate about art and want to delve deeper into artistic techniques, mediums, and concepts. It provides a comprehensive foundation in both practical and theoretical aspects of art.

Throughout the course, you will have the opportunity to try new techniques, such as working with paints, mixed media, and digital tools. You will study famous artists and movements and will have the opportunity to build a sketchbook to document your creative journey.

The first term will introduce you to some of the materials you will be working with. You will explore how to use the formal elements of art, alongside how to use specific materials such as charcoal, watercolours, acrylics, gouache, etching, and monoprinting.

### Entry requirements

Grade 5 or above in a GCSE art-based subject (such as art, graphics, photography or textiles), or you must present a suitable portfolio of work. Additionally, you will need a grade 4 in English language. You also need to meet the overall Sixth Form entry requirements, listed on page 6.

### Why study Art?

This course gives you the freedom to experiment. You will have the opportunity to explore topics that inspire you, whether it's personal experiences, social issues, or something totally unique.

Each year, students have the option to embark on a trip abroad to a city renowned for its artistic heritage. Recent destinations have included Paris and New York. It's an unforgettable opportunity to see art in its cultural context and to gain inspiration for your own creations.

### Where your course can take you

A Level Art opens up a variety of progression routes, such as degree-level study in fine art, graphic design, illustration, fashion, architecture, and more. Career options include an illustrator, graphic designer, animator, make-up artist, printmaker, or art therapist.



# A Level

## Biology



Scan the QR code to learn more

### What you will study

You will learn essential principles in the context of today's themes and issues, such as how our actions enhance the antibiotic resistance of bacteria and lifestyle factors that increase the risk of cancer and heart disease.

In your first year, your learning will be focused on biological molecules, cells, organisms exchanging substances with their environment, genetic information, and variation and relationships between organisms. In your second year, you will explore energy transfers in and between organisms, how organisms respond to changes in their internal and external environments, genetics, populations, evolution, ecosystems and the control of gene expression.

### Entry requirements

Grade 5 or above in GCSE maths and English language. In GCSE combined science: trilogy you will need a grade 6 and 5 or above, or a grade 6 in GCSE biology. You also need to meet the overall Sixth Form entry requirements, listed on page 6.

### Why study Biology?

Your course will combine detailed theoretical knowledge with practical research including laboratory work, interpreting data to solve scientific problems and writing in a scientific way. There will be opportunities to participate in external visits linked to your course, with previous students taking part in a mock autopsy experience, visits to the University of East Anglia to explore genetic engineering techniques and a biodiversity conference at Norwich Castle.

### Where your course can take you

An A Level in Biology can be the first step towards careers in a wide range of fields including healthcare, research, environmental science, education, and biotechnology.

Career options include a research scientist, marine biologist, healthcare or forensic scientist, radiographer, physiotherapist, dentist or veterinary scientist. Biology is identified by selective universities as one of the subjects they prefer applicants to have studied at A Level when progressing to science degrees.





# A Level Business



Scan the  
QR code to  
learn more

## What you will study

Business is a dynamic and engaging subject that will help you develop a deeper understanding of business issues in the modern world. You will study models, theories and techniques, and will engage with current business developments and real business situations.

Throughout the course, you will learn how management, leadership, problem solving, and decision-making can improve business performance within marketing, operations, finance, and HR. You will explore the interrelated nature of business activities and how they are affected, from small and medium-sized enterprises to multinational corporations and conglomerates.

You will explore competitive environments and markets and will also have the opportunity to use a range of quantitative and non-quantitative data to understand how decisions can affect stakeholders as well as shareholders.

## Entry requirements

Grade 5 or above in GCSE English language and maths. If GCSE business has been taken, a Grade 5 or above must have been achieved. You also need to meet the overall Sixth Form entry requirements, listed on page 6.

## Why study Business?

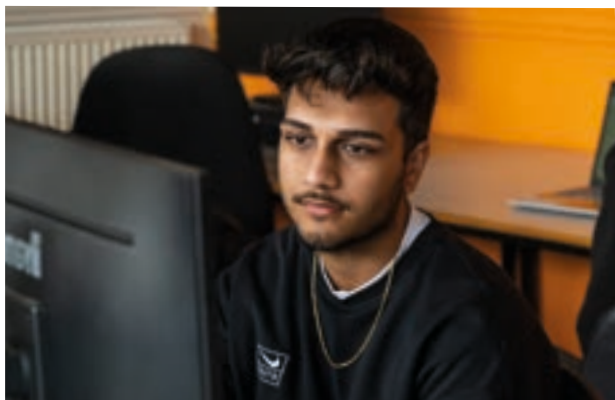
Throughout the course, you will work with businesses such as John Lewis, Kiss Radio, and Imperial College London, while incorporating virtual work experience into your timetable. This is a unique opportunity that allows students to participate in world challenges, competing against schools and colleges in other countries. Previously, students have won challenges for a TikTok sustainable fashion brand, and the creation of a sustainable building with Wates Construction. These are great ways to reinforce your business skills and knowledge.

## Where your course can take you

An A Level in Business will prepare you for degree apprenticeships, as well as university courses in areas such as business management, administration, accountancy and finance, human resources, and marketing.

Through City College Norwich Higher Education, you can study BA (Hons) Leadership and Management, a Chartered Manager Degree Apprenticeship or a Higher Apprenticeship in CMI Operations/Departmental Manager, supporting you to progress close to home.

The course opens doors to a range of careers in areas such as banking, sales, finance, marketing, or management. You will leave this course with the know-how to embrace that inner entrepreneur, and set-up your own business.



# A Level Chemistry



Scan the  
QR code to  
learn more

## What you will study

Chemistry is a hands-on subject that seeks to understand the world of matter, and how it interacts. In your first year, you will cover topics such as the structure of atoms and how they form bonds, chemical reactions, the periodic table, quantities and the mole concept, groups of organic chemicals, making new chemicals and analysing the structure of unknown substances.

In your second year, you will cover topics such as rates of reaction and equilibria, acids and bases, further organic chemistry and analysis, electrochemistry and batteries, and transition metals and compounds.

## Entry requirements

Grade 5 or above in GCSE maths and English language. In GCSE combined science you will need a grade 6 and 5 or above. You also need to meet the overall Sixth Form entry requirements, listed on page 6.

## Why study Chemistry?

If you are enthusiastic about practical laboratory work and problem solving, then A Level Chemistry is perfect for you. Throughout the course, you will have the opportunity to partake in some exciting and engaging practical sessions to support your learning.

The course includes visits to the John Innes Centre and the University of East Anglia as part of our Science, Technology, Engineering and Mathematics (STEM) partnership scheme. You will become involved in our popular 'Art through Chemistry' topic, where you will create art works using several chemical processes such as cyanotypes.

## Where your course can take you

Successful completion of this course could allow you to go on to study at degree level in a variety of subjects including chemistry, environmental science, medicine, pharmacy, dentistry, veterinary science or biology. Some universities have identified chemistry as one of the subjects they prefer applicants to have studied at A Level.

Studying Chemistry can open up a variety of career opportunities in areas including healthcare, research science, forensic science, medicine, dentistry and veterinary science.



# A Level Drama and Theatre Studies



Scan the  
QR code to  
learn more

## What you will study

A Level Drama and Theatre Studies is an exciting and dynamic course that encourages creative expression and immerses you into the world of live performance. Throughout the course, you will study theatre from multiple perspectives - as a performer, designer, director and critical thinker, while also gaining a deeper understanding of dramatic texts and the theatrical process.

This course offers a balance between practical theatre-making and academic exploration. You will develop your own work inspired by influential theatre companies and texts. There will be the opportunity to study lighting, sound, costume or set design.

## Entry requirements

Grade 5 or above in GCSE English language or English literature. GCSE drama is not essential. You also need to meet the overall Sixth Form entry requirements, listed on page 6.

## Why study Drama and Theatre?

Throughout the course, you will have access to a well-equipped studio, lighting rigs and sound systems, costume and props stores, and the college's Platform Theatre.

As part of your course, there are regular theatre trips, and opportunities to learn from a range of workshops that are delivered by professional groups. You will benefit from strong links with local theatres, theatre companies and practitioners. Previously, audition masterclasses have been offered in collaboration with Norwich University of the Arts.

As an A Level student, you will have exclusive access to the National Theatre's New Views playwriting programme. This extracurricular opportunity allows you to work with professional playwrights and potentially have your work performed at the National Theatre.

## Where your course can take you

Previously, students on this course have progressed to higher education and professional training in drama and theatre at a range of prestigious institutions.

This course opens many career pathways in the arts and beyond. Potential careers include an actor, producer, lighting designer, costume designer, community arts worker, or events manager.

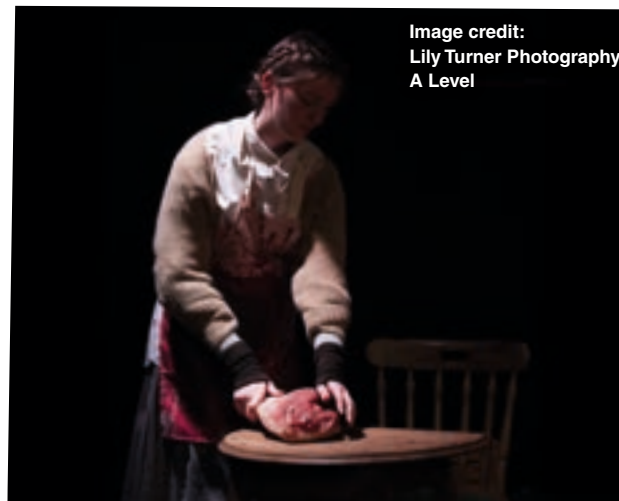


Image credit:  
Lily Turner Photography  
A Level

# A Level English Language



Scan the  
QR code to  
learn more

## What you will study

If you are enthusiastic to discover how the written and spoken word can create atmosphere, change moods or provoke change, this course is perfect for you. You will read a wide range of non-fiction texts, including newspaper and magazine articles, advertisements, blogs, speeches, song lyrics and spoken language transcripts, which you will study through a range of linguistic approaches. You will be encouraged to think about how words represent events and people in different ways, how the writer represents themselves, and how the reader is positioned.

This course will explore how writers and speakers represent factors such as gender, sexuality, region, social background, and occupation, examining the linguistic theories that underpin these ideas. You will also have the opportunity to explore how children learn to speak, read and write.

## Entry requirements

Grade 6 or above in GCSE English language and grade 5 in GCSE English literature. You will not be able to study A Level English Language and A Level English Language and Literature (combined) together. You also need to meet the overall Sixth Form entry requirements, listed on page 6.

## Why study English Language?

Throughout the course you will experience a range of workshops, as well as visits from guest speakers. This has previously included scriptwriters, authors of non-fiction, and ex-students who are studying creative writing. We have previously taken students to Paris for a four-day trip, to explore how English Language is presented and communicated in a European country.

## Where your course can take you

Achieving an A Level in English Language can lead onto a variety of related degree courses. While this course provides particularly good grounding for those aiming for a career in journalism, media or creative writing, it offers transferable skills that can be applied to any career or degree course that requires good language, communication and analytical skills.





# A Level English Language & Literature



Scan the  
QR code to  
learn more

## What you will study

A Level English Language and Literature gives you the exciting opportunity to explore your passion for reading and writing, while studying how language creates specific effects and evokes responses.

You will study a wide variety of texts from different places, periods, and genres, written for different audiences and purposes. You will examine novels, newspapers, blogs, plays, poems, and more through a range of literary and linguistic approaches. You will explore revered writers and poets such as Margaret Atwood and Tennessee Williams.

Throughout the course, you are encouraged to consider how writers and speakers choose to communicate and represent people and places. Lastly, you will examine dialogue and narrative voices in literature and compare them with the spontaneous speech of everyday life.

## Entry requirements

Grade 5 or above in GCSE English language and English literature. You will not be able to study English Language A Level and English Language and Literature A Level (combined) together. You also need to meet the overall Sixth Form entry requirements, listed on page 6.

## Why study English Language and Literature?

Each year, we arrange for guest speakers to visit, and host educational workshops. In previous years we have had scriptwriters, authors of non-fiction, and former students who are studying creative writing visit us.

We have previously taken students to Paris for a four-day trip, taking learning beyond the classroom by supporting their understanding of some of the places represented in the core anthology text.

## Where your course can take you

Achieving an A Level in English Language and Literature can lead onto a wide variety of related degree courses. This course provides good grounding for a career in journalism, media or creative writing. However, you will develop transferable skills that will be an asset in any career that requires good language, communication and analytical skills.



# A Level English Literature



Scan the  
QR code to  
learn more

## What you will study

This course is perfect for genuine lovers of the written word, as you will delve into the work of diverse and iconic writers of poetry, prose and plays.

In your first year of study, you will study texts through the perspective of tragedy, and in your second year you will examine texts that feature elements of political and social protest. There is also the opportunity to explore a personal choice of poetry and prose through the lens of both feminism and ecocriticism, as part of the non-examination assessment unit. Our course follows the AQA specification B syllabus.

## Entry requirements

Grade 5 or above in GCSE English language and English literature. You also need to meet the overall Sixth Form entry requirements, listed on page 6.

## Why study English Language?

You will be introduced to a variety of influential and inspirational writers from F. Scott Fitzgerald to Khaled Hosseini. You will engage in literary debates and discussions with your peers, as well as developing your perceptive, close-reading and writing skills.

You will be given access to a plethora of resources from our well-stocked library, alongside a number of useful databases and journal-based articles to aid your studies.

English Literature students are offered a range of fantastic extra-curricular opportunities. These have included a trip to New York to grant students insight into key settings for a text, a trip to the Theatre Royal in Norwich for a matinee performance of 'The Kite Runner', and a trip to the Globe Theatre in London to watch a performance of Shakespeare's 'Othello'.

## Where your course can take you

Here at CCN Sixth Form Centre, Literature is a highly popular option at degree level. Many opt for degree apprenticeships and full-time employment with major companies after A Level study.

Career options include journalism, law, writing, teaching, publishing, marketing, editing and Personal Relations (PR).



# A Level Environmental Science



Scan the  
QR code to  
learn more

## What you will study

If you have a strong interest in the sustainability of our planet, then this thought-provoking subject will appeal to you.

A Level Environmental Science will deepen your understanding of the complex relationship humans have with the natural world, such as their need for resources like food and minerals, and how modern technologies could help to produce more sustainable lifestyles.

Key areas of study include the bio-physical environment, how we can preserve biodiversity, energy resources, pollution, farming techniques, fishing and forest resources, circular economy, and sustainability.

## Entry requirements

Grade 5 or above in GCSE English language and GCSE maths. You will also need a Grade 5 or above in either GCSE biology or GCSE chemistry. Alternatively you will need two grade 5s or above in GCSE combined science. You also need to meet the overall Sixth Form entry requirements, listed on page 6.

## Why study Environmental Science?

You will cover a range of topics that combine the most popular and relevant content. You will have the chance to explore real-life case studies, making the course not only highly relevant but also closely connected to the world around you.

This course is ideal for those who enjoy a multi-disciplinary approach and complements A Levels in geography, biology, physics, and mathematics. You will develop key skills such as communication, teamwork, and critical thinking — all valued by universities and employers. Your studies will be enriched by fantastic fieldwork trips, where you will explore diverse environments such as sand dunes, rivers, and farms.

## Where your course can take you

This course can lead you to study environmental science, marine biology or climate sciences at degree level, and is considered a compliment to the core sciences if you are planning to study biology or chemistry at degree level.

Through City College Norwich Higher Education at Easton College, you can study BSc (Hons) Wildlife and Conservation, supporting you to progress close to home.

A Level Environmental Science can lead to careers like environmental scientist, sustainability consultant, or conservationist.



# A Level Film Studies



Scan the  
QR code to  
learn more

## What you will study

This course encourages you to watch, analyse, discuss and write about films from different perspectives. You will explore films from a textual and aesthetic level analysing their meanings in different social and historical contexts.

Throughout the course, you will study critical approaches to films, Hollywood film history (examining films such as 'Alien') and silent cinema, and critically acclaimed US and UK contemporary films such as Greta Gerwig's 'Little Women'. You will study European and world cinema, and documentary and experimental film.

## Entry requirements

Grade 5 or above in GCSE English language and literature. If GCSE film studies has been taken, a grade 5 or above must have been achieved. You also need to meet the overall Sixth Form entry requirements, listed on page 6.

## Why study Film?

Alongside your studies, you will apply what you have learnt through shooting and editing tasks that will hone your film production skills. Workshops in creative writing, cinematography, lighting, sound, and editing will help you to prepare for your coursework.

You will have access to a range of DSLR and mirrorless cameras for shooting, lighting and sound equipment, and other equipment to support a polished final production.

You will have the opportunity to go on residential trips to New York and the Berlin Film Festival, engaging with topics in an industry context. Previously, students have worked on extra-curricular activities such as shooting a documentary for Creative Collision, with the support of the National Lottery.

## Where your course can take you

The successful completion of A Level Film Studies opens doors to a variety of degree level courses, such as film making, VFX or other arts subjects. You could also choose to study subjects such as English, politics or sociology. This course assists with your progression towards a wide range of careers in the creative industries.

You could progress onto our Level 4 Media Learning Company course. This one-year course mirrors what it is like to work as part of a media production company. You will work collaboratively on a wide range of projects that have been commissioned by external clients.





# A Level Further Maths



Scan the  
QR code to  
learn more

## What you will study

Further Maths is a course that expands upon, and deepens your understanding of, the content covered throughout A Level Maths.

Throughout both years of the course, you will study a compulsory core maths unit, and optional units in areas like statistics and mechanics. Core maths extends your knowledge of topics such as algebra, trigonometry and geometry, and explores new ideas like calculus. In statistics you will learn how to analyse and summarise numerical data, making conclusions and predictions. In mechanics, you will examine the motion of objects and how they respond to the forces acting on them.

## Entry requirements

Grade 7 or above in GCSE maths. You must also study A Level Maths alongside Further Maths. If you have already completed an A Level in Maths, a grade C or above must have been achieved. You also need to meet the overall Sixth Form entry requirements, listed on page 6.

## Why study Further Maths?

Further Maths will teach you a range of transferable skills, such as to think clearly and logically, and to persevere when you can't immediately see the solution to a problem.

Throughout this course, you will see how the subject can be used to show what is happening and what might happen in different real-life situations. Further, many of the ideas studied throughout the course will form an introduction to modern fields of study such as robotics and biomechanics, as well as traditional fields like engineering and physics.

## Where your course can take you

A Level Further Maths could lead on to a related degree course, in areas such as maths, science, economics, engineering or computing. Some leading universities require students to study A Level Further Maths for related degrees.

Successful completion of this course can open doors to a range of careers, such as an accountant, architect, AI engineer, bank manager, civil engineer, data analyst, or software developer.



# A Level Geography



Scan the  
QR code to  
learn more

## What you will study

In A Level Geography you will study some of the most fascinating aspects of the human and physical world, and explore some of the most pressing issues of our time.

You will dive into both physical and human geography, understanding the natural world and the complex relationships between people and the environment. You will tackle contemporary global challenges such as climate change, migration, urbanisation, and sustainability.

The course encourages you to think critically about these issues and understand the debates that surround them, preparing you to make informed decisions in your future career and everyday life.

## Entry requirements

Grade 5 or above in GCSE English language and maths. You do not need to have completed GCSE geography, however, a grade 5 or above should have been achieved if this was taken. You also need to meet the overall Sixth Form entry requirements, listed on page 6.

## Why study Geography?

One of the unique features of A Level Geography is the comprehensive support available to you. With a wealth of resources at your fingertips, as well as opportunities for fieldwork and practical learning, you will gain a deep, hands-on understanding of the topics you study.

Throughout your studies, you will have the opportunity to visit field sites of geographical interest around East Anglia and utilise specialist equipment to monitor natural phenomena. Field trips will give you the chance to experience geography in action, enhancing your learning with real-world examples.

## Where your course can take you

This course is designed to equip you with essential skills for higher education and the world of work, and is identified by selective universities as one of the subjects they prefer applicants to have studied at A Level.

Through City College Norwich Higher Education at Easton College, you can study BSc (Hons) Wildlife and Conservation, supporting you to progress close to home.

An A Level in Geography can also help you move onto a variety of careers, such as conservation and environmental management, town planning, teaching, or international development.



# A Level History



Scan the  
QR code to  
learn more

## What you will study

A Level History examines events that have shaped the world we live in today. You will analyse our past like a story, where the content will shift according to the storyteller. You will study modern European history, exploring various situations and concepts that still have relevance today, such as democracy and dictatorship. You will then investigate two European countries that underwent such changes in the twentieth century, namely Germany's transition from democracy to dictatorship, and the rise and fall of fascism in Italy.

We consider Britain across the nineteenth century as a wealthy imperial superpower, the challenges faced by being involved in a series of conflicts, and the wide and varied experiences of British people during this time. You will then embark on a thorough study of why all the great powers of Europe chose to become involved in the conflict that became the First World War, examining various historians' views.

## Entry requirements

Grade 5 or above in GCSE English language and, if taken, GCSE history. You also need to meet the overall Sixth Form entry requirements, listed on page 6.

## Why study History?

Throughout this course, you will learn to understand more fully what is happening in the present through examining the past. You will learn the valuable skills of cross-referencing and engaging with a wide range of material, as well as being able to write analytically and in depth.

## Where your course can take you

A Level History is highly valued by many universities because of its academic nature. Many students go on to pursue history-related courses at higher education, but you may use these skills learnt throughout the course to progress onto alternative areas of study.

This course provides the first step towards a successful career in the civil service, law, journalism, teaching, archaeology, or museum work.



# A Level Maths



Scan the  
QR code to  
learn more

## What you will study

If you are keen to learn new mathematical skills, and apply these to problem solving, then look no further than A Level Maths!

This course covers three stimulating and varied main areas: pure mathematics, statistics and mechanics. In pure mathematics, you will cover algebra, geometry, polynomials, trigonometry functions, and calculus. Throughout the statistics element of the course, you will study data and graphs, probability, the binomial and normal distributions, and hypothesis testing. Finally, mechanics is the study of motion, through which you will explore Newton's laws, forces, the constant acceleration formulae, friction and projectiles.

Assessment will be through three written exams at the end of your second year.

## Entry requirements

Grade 6 or above in GCSE maths. You also need to meet the overall Sixth Form entry requirements, listed on page 6.

## Why study Maths?

A Level Maths will teach you to understand the world around you through applying mathematics to real life situations.

The course was developed in collaboration with Mathematics in Education and Industry (MEI), allowing you to develop your mathematical understanding and skills and encouraging you to think, act and communicate mathematically.

Throughout this course, you will study topics on a deeper level and will have the opportunity to discover areas that will be new to you. You will learn to think clearly and logically, and to persevere when you can't immediately see the solution to a problem.

## Where your course can take you

A Level Maths lays the foundation for a range of exciting career paths, such as an accountant, architect, AI engineer, civil engineer, data analyst, economist, finance officer and software developer.

You may choose to progress to degree level, with related degree courses such as mathematics, science, engineering, economics and computing being widely offered. Maths is identified by selective universities as one of the subjects they prefer applicants to have studied at A Level.





# A Level Media Studies

## What you will study

A Level Media Studies will teach you to appreciate how important the media is in our lives, both as consumers and producers, through the analysis of contemporary, global and historical media.

You will study various areas of media such as representations, audiences, industries and media language.

You will discuss key media theorists and their ideas, discover how media products appeal to a target audience, and explore how meaning is constructed.

There are nine media forms that you will study: television, film, radio, newspapers, magazines, advertising and marketing, online, social and participatory media, and video games and music videos. You will also create a media product through coursework.

## Entry requirements

Grade 5 or above in GCSE English language. You don't need to have completed GCSE media, however if it has been taken, a grade 5 or above is required. You also need to meet the overall Sixth Form entry requirements, listed on page 6.



Scan the  
QR code to  
learn more



## Why study Media?

Throughout this course, you will be supported by experienced staff and have access to high-quality digital cameras and supporting equipment. You will also have access to Adobe Creative Cloud software to support your learning.

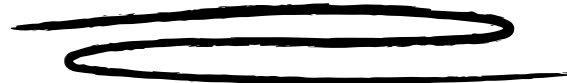
For each media form you cover, you will analyse exciting and engaging set texts; examples include The Daily Mail, Lupin, and Stranger Things.

The coursework element usually offers a choice between two cross-media products — a magazine and website, or a music video and website — allowing you to choose what interests and inspires you.

## Where your course can take you

A Level Media Studies supports progression to a range of degrees, such as media production, media studies, digital film production, journalism, advertising, and marketing. It can kickstart your journey towards a career in the media, cultural, and creative industries. Options include film and video production, television and radio production, journalism, marketing and public relations, and communications.

You could progress onto our Level 4 Media Learning Company course. This one-year course mirrors what it is like to work as part of a media production company. You will work collaboratively on a wide range of projects that have been commissioned by external clients.



# A Level Photography



Scan the  
QR code to  
learn more

## What you will study

Photography, in a digital era, is accessible to all and available in our pockets through smart devices. But what does it take to create quality, engaging photographs? A Level Photography will train you in taking an art and design approach to photography, teaching you skills in contemporary and historic practice.

You will study the art of documentary photography, mixed media, darkroom and analogue processing, non-camera based photography, studio work, Photoshop, and more. This is all while discovering how to express yourself and communicate through visual methods.

## Entry requirements

Grade 4 or above in GCSE English language. Grade 5 or above in an art and design based subject. We will consider applicants with a suitable portfolio, should the above requirements not have been met. You also need to meet the overall Sixth Form entry requirements, listed on page 6.

## Why study Photography?

The course is taught in a well-equipped specialist room with high-spec PCs, professional printers, and industry standard photographic equipment. You will also have access to our traditional darkroom.

You will have the opportunity to visit galleries and exhibitions, and be invited on a yearly residential trip to a city renowned for its artistic heritage; recent destinations include Berlin, Amsterdam, Paris, and New York. We arrange a variety of visiting guest speakers from exciting university courses and professional creatives, and at the end of the course, you will showcase your work at our annual Art and Design Show.

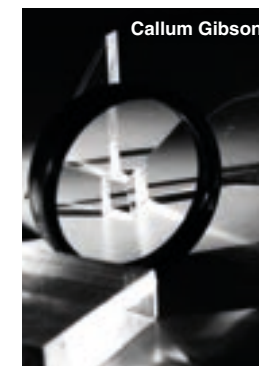
## Where your course can take you

This course provides the perfect opportunity to begin your journey into creative industries, whether you are looking to progress to higher education or the world of work.

Career options include freelance photographer, art director, marketing officer, digital retoucher, medical illustrator, practicing artist, photojournalist, digital illustrator, editorial writer and curator.



Bunny Edwards



Callum Gibson



Sophie McGinlay

# A Level Physics



Scan the  
QR code to  
learn more

## What you will study

Physics is a fascinating subject that examines how our world and the rest of the universe works. It questions everything, from what existed before the Big Bang to how cars can use less petrol. This course is the perfect option for lovers of maths, particularly algebra. You will be encouraged to think critically and will have the opportunity to develop your problem-solving skills.

This course combines the theoretical study of physics and practical laboratory work that will allow you to analyse data. In your first year, you will focus on a variety of topics including measurements and their errors, particles and radiation, waves, mechanics and materials, as well as electricity. In your second year, you will progress onto topics including circular motion, oscillations, fields, thermal physics, and nuclear physics.

## Entry requirements

Grade 6 or above in GCSE maths. You will also a grade 6 or above in GCSE physics, or two grade 6's or above in combined science. You also need to meet the overall Sixth Form entry requirements, listed on page 6.



## Why study Physics?

Throughout this course, you will have access to a specialist physics lab and equipment to support your learning journey.

You will have the chance to practice the skills you have learned through a range of hands-on experiments that encourage the use of a breadth of equipment. There will be exciting opportunities to watch various demonstrations, such as the giant capacitor, and the mystery of the chocolate chip muffin model.

## Where your course can take you

Successful completion of this course can help you progress onto study degree-level courses in a variety of subjects. Some examples include science, meteorology, geophysics, computing, and engineering. Physics has been identified by selective universities as one of the subjects they prefer applicants to have studied at A Level.

Studying physics can open up a variety of career opportunities in areas including science, computing, and engineering.



# A Level Politics



Scan the  
QR code to  
learn more

## What you will study

If you are eager to understand the world around you through a political lens, then A Level Politics is well suited to you. You will explore the UK political system, the philosophy behind different political ideologies, and global political issues.

Year one of the course is UK-focused, covering UK politics and the UK Government. UK politics focuses on how people participate in politics, including political parties, voting and referendums. The UK Government examines how the political system works, including Parliament and the Supreme Court.

In year two, you will begin by studying political ideologies. This will teach you about what liberals, conservatives, socialists and nationalists believe, and why they think this. You will then move on to global politics, which will cover global issues such as conflict, the economy, and the environment.

## Entry requirements

Grade 5 or above in GCSE English language, and preferably a grade 5 in all essay-based subjects (e.g. history, English literature etc). You also need to meet the overall Sixth Form entry requirements, listed on page 6.

## Why study Politics?

In the past, we have had opportunities to support learning through trips to A Level Politics conferences, the Supreme Court, and political theatre shows. Students have heard from guest speakers such as politicians, journalists and the president of the Law Society.

Throughout the course, you will develop a range of transferable skills, such as being able to analyse information from different perspectives, formulate considered arguments, and express yourself clearly in writing.

## Where your course can take you

A Level Politics is the perfect subject to study if you are thinking of pursuing subjects like politics, law, or history at university, as well as other courses and apprenticeships in areas like media and business.

Through City College Norwich Higher Education, you can study BA (Hons) Social Sciences, supporting you to progress close to home.

A Level Politics can help you to progress into careers directly related to politics, such as the civil service, as well as other areas such as law, journalism, and business management.





# A Level Psychology



Scan the QR code to learn more

## What you will study

A Level Psychology will answer the question of why people behave as they do, and will explore what drives our thoughts, emotions and actions. This course gives you the chance to explore these fascinating questions using a variety of scientific methods such as experiments, interviews and questionnaires.

During your first year, you will study memory, attachment, social influence, approaches in psychology, clinical psychology and research methods. The topics you will investigate in your second year include the issues and debates in psychology, gender, schizophrenia, forensic psychology and advanced research methods.

## Entry requirements

Grade 5 or above in GCSE English language and GCSE maths, as well as grade 5 in the sciences. You do not need to have completed GCSE psychology, however if it has been taken, a grade 5 or above should have been achieved. You also need to meet the overall Sixth Form entry requirements, listed on page 6.

## Why study Psychology?

A Level Psychology is perfect for those who are keen to immerse themselves in a new and thought-provoking subject, supported by experienced, enthusiastic subject specialists. This course will challenge your interpretation skills, your ability to remember factual information, and will include elements of maths.

Your lessons will give you the opportunity to undertake research into a range of interesting topics and psychological questions, which will be supported by introductions to real-world studies that look to understand behaviours. There may also be opportunities to support your learning by attending psychology based trips.

## Where your course can take you

Students who have studied A Level Psychology could progress to study the subject at university. You may choose to progress to related courses, such as sports coaching, social sciences and neuroscience. Some students prefer to progress to higher level apprenticeships. Through City College Norwich Higher Education, you can study BA (Hons) Social Sciences, supporting you to progress close to home.

A Level Psychology provides the perfect first steps towards a range of exciting careers, such as teaching, business, social work, healthcare or the police.



# A Level Religious Studies



Scan the QR code to learn more

## (Philosophy and Ethics)

## What you will study

A Level Religious Studies (Philosophy and Ethics) is the ideal course for those who often find themselves thinking through the big questions in life.

Throughout this course you will explore the world of philosophy and ethics, giving you the opportunity to think through questions such as whether there is a God or not, and how we can know the right thing to do in any situation.

In addition, you will explore Eastern philosophical thought and religion in the form of Buddhism. You will study its key ideas, such as how we can escape suffering, and examine concepts such as meditation, karma, and rebirth.

## Entry requirements

Grade 5 or above in GCSE English language. If you have studied GCSE religious studies or philosophy and ethics, then a grade 5 or above is required. You also need to meet the overall Sixth Form entry requirements, listed on page 6.

## Why study Religious Studies?

A Level Religious Studies is a thought-provoking subject that challenges you academically and personally, and inspires plenty of classroom discussion and debate.

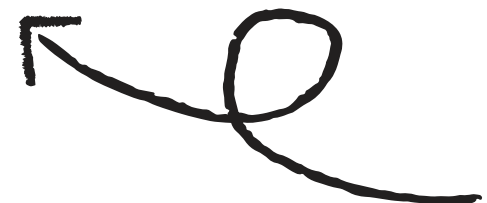
Throughout the ethics element of the course, you will apply the theories you have learned to some of the biggest moral dilemmas of our day; these include assisted dying, and how we should balance human needs with animal rights.

Studying Buddhism is a unique opportunity to learn about a religion that has inspired much western interest in meditation and spirituality. There may also be the valuable opportunity to visit a Buddhist temple, helping to support your learning further.

## Where your course can take you

This course allows you to gain the critical and evaluative skills sought by higher education, making it a valuable course if progressing to arts and social science subjects at university.

With an A Level in Religious Studies, you are taking your first steps towards a career in range of fields, such as journalism, law, youth work, teaching, and politics.



# A Level Sociology



Scan the QR code to learn more

## What you will study

Do you often find yourself reflecting on the social world that you live in? Or perhaps you often question how your own experiences have been shaped by society?

Throughout this course, you will look critically at different features of society, such as family, education, beliefs and crime. You will question social organisation, understand people's experiences in different societal positions and groups, and become more articulate and fluent in expressing your ideas and opinions. You will combine theoretical perspectives and real-world problems, learning to compare different ways of understanding society.

There is no right and wrong in sociology, only different points of view, and so you will be encouraged to think critically and open yourself up to new ideas.

## Entry requirements

Grade 5 or above in GCSE English language. You do not need to have completed GCSE sociology however if it has been taken, a grade 5 or above should have been achieved. You also need to meet the overall Sixth Form entry requirements, listed on page 6.

## Why study Sociology?

Students will come to A Level Sociology from a variety of backgrounds, and with different experiences, making for lively and stimulating sociological discussions and debates. You will learn through a variety of exciting methods, such as topical visual material, news articles, interactive textbooks and more.

We offer dedicated teaching rooms and specialist sociology teachers who have considerable expertise in the subject; your teacher will have a real commitment to and belief in the value of sociology.

## Where your course can take you

Many students choose to continue their exciting sociological journey by studying sociology at degree-level. Through City College Norwich Higher Education, you can study BA (Hons) Social Sciences, supporting you to progress close to home. Other A Level Sociology students typically study subjects such as politics, law, history, social work, teaching, social policy, and criminology.

Career options are diverse and exciting, such as policing, social work, law, teaching, and the Civil Service.



# A Level Textiles



Scan the QR code to learn more

## What you will study

Discover your own artistic voice, and experiment boldly with A Level Textiles!

This course is designed for those who are passionate about textiles and want to delve deeper into various techniques, materials, and concepts. With its blend of practical skills, theoretical knowledge, and personal exploration, you will be encouraged to push your creativity and think critically.

Throughout the course, you will work with various textile materials and methods, including weaving, printing, dyeing, embroidery, embellishment techniques, monoprinting, and more. You will study famous textile artists, designers and movements to fuel your own artistic vision, and build a sketchbook to document your creative journey.

## Entry requirements

Grade 5 or above in GCSE English language, and preferably a grade 5 in all essay-based subjects (e.g. history, English literature etc). You also need to meet the overall Sixth Form entry requirements, listed on page 6.



## Why study Textiles?

The course will allow you to explore topics that inspire you, whether it's personal experiences, social issues, or something totally unique.

To support your studies, you will have the option to attend events organised by Norwich University of the Arts and have the option to embark on an incredible visual arts trip to a city renowned for its artistic heritage; recent destinations include Paris and New York. This is an unforgettable opportunity to see art in its cultural context and allows you to gain inspiration for your own creations.

## Where your course can take you

A Level Textiles is an enriching and rewarding course that opens doors to endless possibilities in the world of textiles and beyond. Universities offer specialised degrees in textile design, fashion, interior design, and more. You could also progress onto a foundation art course, an internship, or degree apprenticeship.

Career options include a textile designer, fashion designer, interior designer, printmaker, colour technologist and more.





# Level 3 Extended Project Qualification (EPQ)

## What you will study

The EPQ is a one-year course that is designed to help you become a skilled researcher and work independently. It is excellent preparation for higher education study and is perfect for those keen to study a particular topic of interest in more depth.

Throughout the course, you will develop core research skills to produce either a 5,000-word dissertation on a subject of your choice or an artefact such as a piece of artwork, music, event, podcast, or video. You will deliver a 15-minute presentation on your project at the end.

The course runs from the summer term of Year 12 to January of Year 13, beginning an information day, followed by one weekly lesson with an assigned supervisor.

## Entry requirements

The EPQ is available to A Level students as an option to take from the summer term of Year 12. While there are no strict entry requirements, the EPQ will be offered where it will positively impact your next steps after college. You also need to meet the overall Sixth Form entry requirements, listed on page 6.

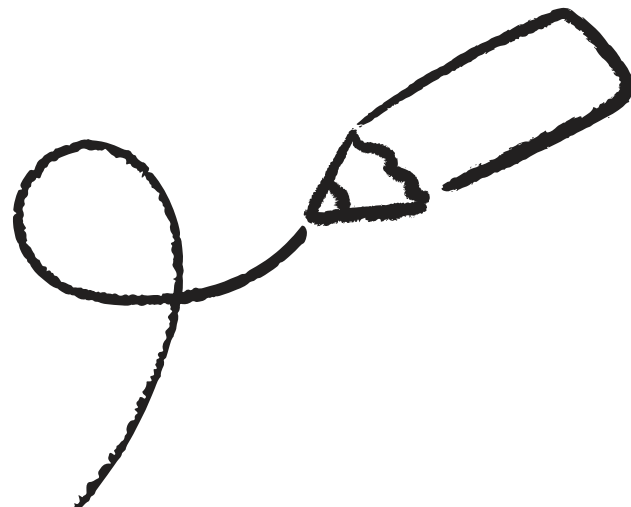
## Why study EPQ?

This is an exciting opportunity to take control of your own learning, by having the freedom to study what interests you most and producing a project of your choice.

Throughout the course, you will develop a variety of skills that will be essential for both higher education and future employment. These skills include project management, searching and collecting information, evaluating information, data analysis, referencing and citation, and report writing and presentation.

## Where your course can take you

Those who have successfully completed their EPQ will be in great standing to excel in higher education and beyond. Further, the course provides additional UCAS points. Successful completion of this course will demonstrate that you have developed valuable interpersonal and independent research skills that will assist you in future education and employment.



# How to apply

Follow these steps and submit your application on our website: [www.ccn.ac.uk](http://www.ccn.ac.uk)



## Step 1 Apply on our Learner Hub

Complete your application online. This will create a college Learner Hub account where you can monitor the progress of your application. Applications open on October 1st 2025, and we recommend applying as early as you can.

## Step 2 Book your interview

You will be invited to attend an interview where your chosen subjects will be discussed. Book your interview via your Learner Hub account.

## Step 3 Accept your offer

We will get in touch shortly after you have attended your interview with an official offer. You will need to sign in to your college Learner Hub account to accept your offer.

## Step 4 Enrol

Enrolment occurs in the last two weeks of August. We will send you an appointment date and time at the start of August. During your appointment, you will meet your tutor, provide details of the qualifications you have achieved, and receive full information about your course.

## Apply early

Our courses fill up quickly! Get your application in early, applications open on October 1st 2025.

## Help You Choose

If you are applying through "Help You Choose" via your school, you will be emailed a link to create your college Learner Hub account. Remember to keep your login details safe as you will need this to monitor your application and book your interview and/or taster day.

## Applying for more than one course?

For A Levels, you will have one interview where all your subject choices will be discussed. For a second-choice interview for a different programme of study at City College Norwich, please contact our Admissions team by emailing [admissions@ccn.ac.uk](mailto:admissions@ccn.ac.uk) or call **01603 773008**. If you have first choice offers from multiple campuses (City College Norwich, Easton or Paston College), you will need to choose your main preference by June.

## International students

If you have come to live in the UK from overseas and would like to study at our college, please contact our International Adviser by emailing us at [international@ccn.ac.uk](mailto:international@ccn.ac.uk) or call **+44 (0)1603 773798** for help and guidance on how to apply.

## Interested in Apprenticeships?

Find out more about Apprenticeships: [www.ccn.ac.uk/apprenticeships](http://www.ccn.ac.uk/apprenticeships)

## We are here to support you

Got a question about your application? Get in touch with our Admissions team by emailing [admissions@ccn.ac.uk](mailto:admissions@ccn.ac.uk) or call us on **01603 773008**.





# What will my day look like?

Once you have enrolled in the summer, you will be given your college timetable. We have included an example to give you an idea of what your study programme will include and how your time will be allocated throughout the week. Please note, this is just an example and all timetables are based on your individual course choices and will be finalised once enrolment is completed.

## A typical timetable for A Levels

	9am	10am	11am	12pm	1pm	2pm	3pm	4pm	5pm
Monday		Study session			Course Business		Course Business		
Tuesday	Course Politics	Course Politics		Tutorial session	Independent learning and enrichment				
Wednesday	Form group	Course Sociology	Course Sociology	Independent learning and enrichment					
Thursday	Course Business	Course Business			Course Politics		Course Politics		
Friday	Independent learning and enrichment				Course Sociology		Course Sociology		

Break times





# College facilities



Scan the QR code to learn more

**Our Sixth Form Centre is part of the state-of-the-art campus at City College Norwich, equipped with fantastic facilities. These are some of the resources you may find yourself using on a daily basis.**



## Places to eat

We have a range of places to eat and socialise with friends on our campus. These include our Starbucks and Costa Coffee cafes where you can grab your favourite syrup lattes and iced coffees to set you up for the day. If you're looking for a homemade lunch, Debut Cafe is run by the amazing Hospitality and Catering students at CCN offering a daily menu of hot dishes, sandwiches and sweet treats you can eat in or take away. You can also visit The Diner and The Hub open for breakfast, lunch and afternoon snacks you can eat in or takeaway.

Additionally, our campus is home to Debut Restaurant, also run by CCN Hospitality and Catering staff and students, serving sit-down lunches and dinners from a seasonal menu. The restaurant is open to the public and hosts themed nights and taster menus showcasing the outstanding talent of our students.



## Library and Wellbeing Hub

Our newly refurbished Library and Wellbeing Hub provides students with access to learning resources and study support, flexible study areas, computers, wellbeing services, and multi-faith rooms.

The £1.1m refurbishment was completed in February 2025, with the hub spread across two floors and designed to make our student services accessible, welcoming, and flexible for all students. Our Library and Wellbeing team work within this zone during the day and provide support, triage and signposting.



## Solutions Hair and Beauty

Our Hairdressing, Barbering and Beauty students at CCN complete their training in the on-site salon-Solutions-where they offer services and treatments to members of the public. As a student at CCN Sixth Form Centre, you will be able to book in for a range of low-priced treatments. These include haircuts, styling, colouring and strengthening treatments, male grooming services including cutting, hot towel shaves, waxing and perming, and beauty treatments such as facials, massages, nail care, waxing, tanning and tinting.



## Platform Theatre

Our 160-seat Platform Theatre has recently undergone a £300,000 transformation, including a brand new custom hoist system which surpasses industry standards. Students are invited to enjoy a night at the theatre and book tickets to see one of the fantastic dance, drama or musical theatre productions staged by our Performing Arts students.



## Outside spaces

Despite our city centre location, our campus offers a range of green outdoor spaces with picnic tables for you to enjoy your lunch or catch up with friends over break times on those warmer days. These areas are dotted across campus and provide a place to refresh away from the classroom.





# Supporting your studies



**Our Student Services team are here to provide you with the support and advice you need to focus on your studies and make your time with us as enjoyable as possible. We care about your future, that's why we have a friendly and professional advice team offering information and support on careers, finance, travel and more.**

## The Advice Shop

Through The Advice Shop, we offer expert impartial advice and guidance for anyone considering their career, education and training options.

This free service is available to both our existing students and young people and adults across Norfolk exploring options to study with us. For more information, email [information@ccn.ac.uk](mailto:information@ccn.ac.uk) or call **01603 773773**.

## Careers support

**Our qualified careers advisers offer a range of careers services for students, including:**

One-to-one guidance appointments

Help with CV writing

Job and Apprenticeship applications

Interview preparation

Support in applying for both higher education and university

We also run careers fairs and inspirational talks and discussions from local and national employers, to help you prepare for the world of work.

## Finance support

Student funding can seem a complicated and daunting subject and you may not be sure what you are entitled to. Our Student Finance Advisers can provide you with clear, accurate and confidential advice about bursaries and free college meals. You can get in touch with them by emailing [financialadvice@ccn.ac.uk](mailto:financialadvice@ccn.ac.uk)

## Travel advice

Located just outside the city centre, City College Norwich is easily accessed by car, bus or train. And as a student with us, you can enjoy discounted travel from Norfolk County Council, discounts with Greater Anglia and exclusive deals with bus companies, saving you money travelling to and from college.

See pages 46-47 for more information.

## Wellbeing team

Our Wellbeing Team are here to help you fulfil your potential and maximise your physical and mental wellbeing with free confidential help and guidance for any concerns that you might have during your time with us. They can advise and signpost you to support available for a range of different concerns from mental health to financial worries.

There are a variety of ways in which you can access support at college: from speaking to a member of our team for one-to-one confidential advice and support, to accessing self-help resources through the intranet, and a referral to our specialist wellbeing services like the mental health adviser and college counselling service.

The Wellbeing Team are here to help you thrive in your academic and personal life while at college.



## Curriculum Services

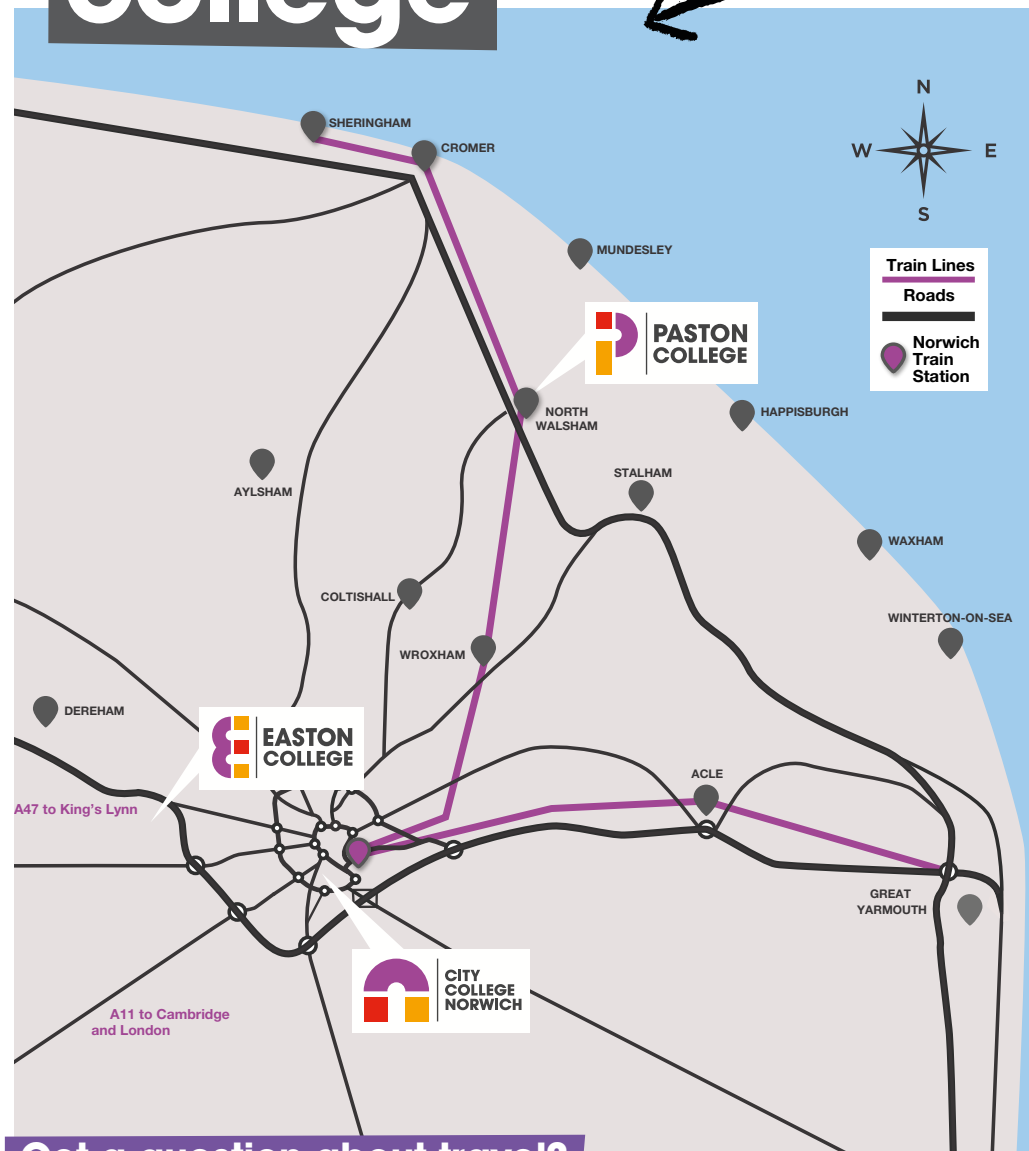
City College Norwich is passionate about supporting students who need additional learning support. Our aim is to ensure you have the information and support to enable participation and help you achieve the best possible education outcomes.

Our Curriculum Services team will assess your needs so we can provide the most effective and appropriate support for you.

You can contact our Special Educational Needs Team and share your Education Health and Care Plan (EHCP) by emailing [sen@ccn.ac.uk](mailto:sen@ccn.ac.uk). You can also inform us of any support needs you have during exams once you have enrolled.



# Travelling to college

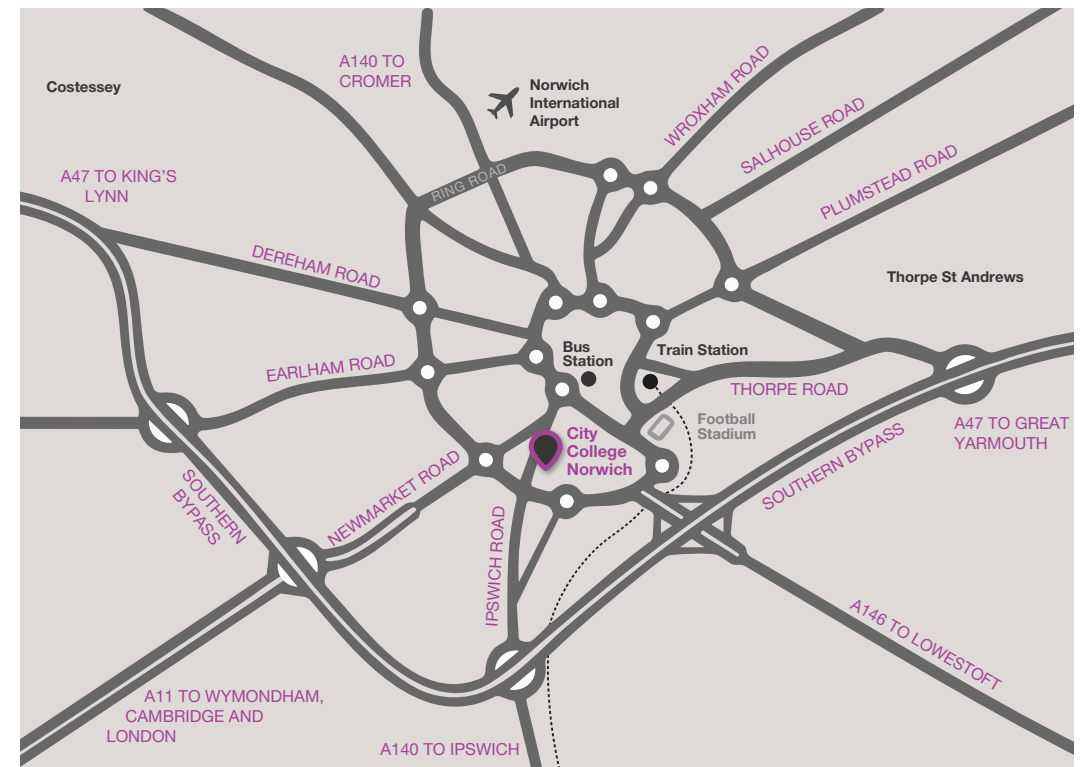


## Got a question about travel?

Get in touch with our Student Transport Officer by calling **01603 773607** or email us at: [citytravel@ccn.ac.uk](mailto:citytravel@ccn.ac.uk)

## Find out more...

For more information on getting to our college visit [www.ccn.ac.uk/travel-guide](http://www.ccn.ac.uk/travel-guide)



**CCN Sixth Form Centre is located on Ipswich Road which is around an eight minute walk from the city centre.**

From the St Stephen's Street roundabout (near the bus station), follow the signs to Ipswich. A few hundred metres south of the roundabout the A11 and A140 divide; take the left fork (A140) and the college is about 300 metres further along on the left.

## By bus

Discounted bus passes are available to all college students. Visit [www.ccn.ac.uk/travel](http://www.ccn.ac.uk/travel) for the most up-to-date prices and to find out more.

## By train

Norwich Train Station is located about 1.5 miles from the college, which takes around 30 minutes to walk. However both TMS Harford Park and Ride and First Buses operate regular services from the Train Station, St Stephens, and the Norwich Bus Station as well as City College Norwich bus stop. The timetables for First Buses can be found at [www.firstgroup.com/norfolk-suffolk](http://www.firstgroup.com/norfolk-suffolk). Visit [www.ccn.ac.uk/travel](http://www.ccn.ac.uk/travel) for information on travel discounts.

## Park and Ride

The Park and Ride routes covering our Ipswich Road campus are: Harford Park and Ride, Sprowston Park and Ride Airport and Thickethorn Park and Ride which operate to Newmarket Road/Town Close Road and is a five minute walk. Postwick Park and Ride operates to St Stephens Street in the city centre which is an eight minute walk.

Routes run Monday to Saturday with arrivals in the city before 5:46am. The last bus is around 10pm depending on the site. A Young Person day ticket (up to 20 years of age) is £2. More fares and information is available at [www.simonds.co.uk](http://www.simonds.co.uk)



# Campus

## Map



## Buildings

- |   |   |   |
|---|---|---|
| <b>1 Norwich Building</b><br>Room numbers: A,B,C        | <b>5 Norfolk Building</b><br>Room numbers: LG, LF, MG, MF, KG, KF, DC | <b>9 Creative Arts Building</b><br>Room numbers: CA |
| <b>2 Inclusive Learning Building</b><br>Room numbers: A | <b>6 Blakeney Building</b><br>Room numbers: E, ACE                    | <b>10 Digi-Tech Factory</b><br>Room numbers: DT     |
| <b>3 Lewis Building</b><br>Room numbers: G              | <b>7 Construction Skills Hub</b><br>Room numbers: CSH                 | <b>11 Wroxham Building</b><br>Room numbers: F       |
| <b>4 Happisburgh Building</b><br>Room numbers: HB       | <b>8 Cromer Building</b><br>Room numbers: D                           | <b>12 Nursery</b>                                   |

## Facilities

- Library and Wellbeing Hub
- Reception
- ATM
- Curriculum Services
- Scribbles Stationery Shop

- Staff Parking
- Visitor Parking
- Student Parking
- Costa
- Starbucks
- The Diner

# Student life

## Students' Union

Our Students' Union (SU) plays a key role in the life of the Sixth Form Centre and represents the voice and interests of all our students. Every student automatically becomes a member of the SU once you have enrolled on your course, and through this you will receive the benefits of membership of the National Union of Students (NUS).

Throughout your time at college, the SU are here to make sure your voice is heard and your experience here is as rewarding and fulfilling as possible. Led by students, the SU advocates for and provides day-to-day support, advice and signposting to sources of support for all our students. The SU is a democratic organisation, with the president elected by students, and provides opportunities for you to represent your peers as a member of the Executive Officer team and at Student Parliament.

The SU organises a regular programme of events for students, including Welcome Week, as well as facilitating student-led enrichment through our clubs and societies.

The SU operates across all our college campuses, and at City College Norwich their desk can be found in the Library and Wellbeing Hub.

## Clubs and societies

Interested in exploring something new, developing a hobby or meeting other students? Our range of clubs and societies provide the perfect place to enjoy college life away from your studies.

At City College Norwich you could join our Music Club, LGBTQ+ Society, take part in five-a-side football or basketball, get creative at the INKspire College Magazine Club or join our Film Appreciation Society.



# Ways of Working

**As a student at our Sixth Form Centre, you will be expected to make a commitment to study in-line with our Ways of Working, which our current students and staff strive to put into practice each day.**

**Our Ways of Working play an important part in making our college a place that is welcoming, open and successful, providing a positive experience for students and staff.**



**Kind and Curious**



**Open and Informative**



**Respectful and Fair**



**Collaborative and Inclusive**



**Consistent and Responsible**



# City College Norwich Courses



**City College Norwich offers the widest choice of courses in Norfolk! Explore what's on offer at our vibrant campus and find the perfect course for you. If you're unsure on the best route for you, get in touch with our friendly team by emailing [admissions@ccn.ac.uk](mailto:admissions@ccn.ac.uk) or call 01603 773008**

## Academic Progression

*Specifically designed to help you progress onto the next stage of your education and are split into pathways appropriate to your next steps:*

Academic Progression Insight  
Academic Progression GCSEs

Visit [www.ccn.ac.uk/academic-progression](http://www.ccn.ac.uk/academic-progression) to find out more.

## A Levels

Art  
Biology  
Business  
Chemistry  
Drama and Theatre Studies  
English Language  
English Language and Literature  
English Literature  
Environmental Science  
Extended Project Qualification  
Film Studies  
Further Maths  
Geography  
History  
Maths  
Media Studies  
Photography  
Physics  
Politics  
Psychology  
Religious Studies (Philosophy and Ethics)  
Sociology  
Textiles

## Apprenticeships

*Apprenticeships offer great career opportunities, allowing you to earn and learn at the same time*

Visit [www.ccn.ac.uk/apprenticeships](http://www.ccn.ac.uk/apprenticeships) to find out more.

## Art, Design, Fashion and Photography

Architecture and 3D Design  
Art and Design  
Digital Art and Illustration  
Fashion and Textiles  
Fine Art  
Photography

## Automotive

Automotive Inspections  
Automotive Transport Maintenance  
Step Into Engineering and Automotive  
T Level in Maintenance, Installation and Repair (Light and Electric Vehicles)

## Business

Business  
Step Into Creative Media, Business and IT  
T Level Foundation Year in Business  
T Level Foundation Year in Marketing  
T Level in Management and Administration (Business Support)  
T Level in Management and Administration (Team Leadership and Management)

## Construction

Bricklaying  
Carpentry and Joinery  
Construction Multi Skills  
Electrical  
Plumbing  
T Level in Design, Surveying and Planning for Construction

## Digital

Digital  
Step Into Creative Media, Business and IT  
T Level Foundation Year in Digital  
T Level in Digital Support Services  
T Level in Digital Software Development

## Education, Early Years and Childcare

Caring for Children  
Early Years Practitioner  
Step Into Childcare  
T Level in Education and Early Years (Early Years Educator)  
T Level in Education and Early Years (Assisting Teaching)

## Engineering

Engineering  
Step Into Engineering and Automotive  
T Level Foundation Year in Engineering  
T Level in Maintenance, Installation and Repair (Mechanical and Mechatronics)

## ESOL (English for Speakers of Other Languages)

*These qualifications provide progression to vocational and academic courses as well as, employment and everyday life skills.*

Visit [www.ccn.ac.uk/ESOL](http://www.ccn.ac.uk/ESOL) to find out more.

## Hair and Beauty

Barbering  
Beauty and Spa Therapy  
Beauty Therapy  
Hair, Media Makeup Artistry, Theatrical and SFX  
Hairdressing  
Media Makeup Artistry  
Step Into Hair and Beauty

## Health and Social Care

Health and Social Care  
Step Into Health and Social Care  
T Level Foundation Year in Health  
T Level in Health (Adult Nursing)

## Hospitality and Catering

Hospitality and Catering  
Introduction to the Hospitality Industry  
Professional Cookery  
Step Into Hospitality and Catering

## Inclusive Learning

*These courses help you to progress to your next steps through our bespoke small group programmes.*

Visit [www.ccn.ac.uk/inclusive-learning](http://www.ccn.ac.uk/inclusive-learning) to find out more.

## Media and Games Design

Creative Media  
Creative Media Production  
Games Design  
Games Design and Development  
Step Into Creative Media, Business and IT

## Performing and Production Arts

Acting  
Dance  
Music  
Music, Performing and Production Arts  
Musical Theatre  
Performing Arts  
T Level in Events and Venues Technician

## Travel and Tourism

Travel and Tourism

## The Media Learning Company

*The Media Learning Company offers a unique chance to collaborate with like-minded people in an environment that reflects working in a media production company.*

Go to page 56 or visit [www.ccn.ac.uk/mlc](http://www.ccn.ac.uk/mlc) to find out more.



# Easton College

## Courses



Set in over 160 hectares of countryside, Easton College is a wonderful place to study! Take a look at the exciting and specialist courses on offer. And if you need a hand finding the right course for you, get in touch with our friendly team by emailing [admissions@easton.ac.uk](mailto:admissions@easton.ac.uk) or call **01603 773008**

### Apprenticeships

*Apprenticeships offer great career opportunities, allowing you to earn and learn at the same time*

Visit [www.easton.ac.uk/apprenticeships](http://www.easton.ac.uk/apprenticeships) to find out more.

### Agriculture

Agriculture  
Agriculture and Rural Studies

### Agricultural Engineering

Land-Based Engineering

### Animal Studies

Animal Care  
Animal Nursing Assistant  
Step into Animal Studies  
T Level in Animal Management and Behaviour  
T Level in Animal Management and Science

### Construction

Construction Multi Skills

### Environmental Conservation and Countryside Management

Land and Wildlife Management  
Land-Based Studies

### Equine Studies

Equine Management  
Horse Care

### Floristry

Floristry

### Forestry and Arboriculture

T Level in Tree and Woodland Management and Maintenance

### Horticulture

Horticulture

### Inclusive Learning

*These courses help you to progress to your next steps through our bespoke small group programmes.*

Visit [www.easton.ac.uk/inclusive-learning](http://www.easton.ac.uk/inclusive-learning) to find out more.

### Outdoor Leadership

Outdoor Leadership

### Sport

Performance and Excellence  
Sport  
Sport Coaching and Development  
Sport and Exercise Science

### Uniformed Services

Uniformed Services



# Paston College

## Courses



With a long-established reputation for academic excellence and a superb all-round student experience, explore the courses Paston has to offer. If you need further support our friendly team are available to help you. Email [admissions@paston.ac.uk](mailto:admissions@paston.ac.uk) or call **01692 402334**

### A Levels

Art  
Biology  
Business  
Chemistry  
Computing  
Criminology  
Drama and Theatre Studies  
English Language and Literature  
English Literature  
Environmental Science  
Extended Project Qualification  
Film Studies  
Further Maths  
Geography  
Graphic Communication  
History  
Information Technology  
Law  
Maths  
Media Studies  
Philosophy and Religion  
Photography  
Physics  
Politics  
Psychology  
Sociology  
Sport  
Textiles

### Career-focused courses

Academic and Vocational Progression  
Core Maths  
Creative Media  
Early Years Practitioner  
Health and Social Care

### Inclusive Learning

*These courses help you to progress to your next steps through our bespoke small group programmes.*

Visit [www.paston.ac.uk/inclusive-learning](http://www.paston.ac.uk/inclusive-learning) to find out more.

### T Levels

T Level in Education and Early Years  
T Level in Management and Administration (Business)





# Media Learning Company

## Level 4



Scan the QR code to learn more

**Thinking about a career in media production – whether that's film, TV, radio, animation, photography, or graphic design? Do you have a burning desire to bring your creative ideas to life through any of these media?**

The Media Learning Company offers a unique opportunity to work with like-minded people in a way that mirrors what it is like to work as part of a media production company. This one-year course is very different to other qualifications. While you will be working towards a Level 4 qualification, your day-to-day experience will be much more like having a job than being on a college course.

As a member of the Media Learning Company, you will work collaboratively on a wide range of projects that have been commissioned by external clients. This could include documentary films, attention-grabbing promos, awareness-raising campaigns, podcasts, interviews, and more. You will have plenty of opportunity to develop the skills and creative ideas that you are most interested in, within a vibrant and supportive environment. You will be mentored by industry professionals, including Norwich-based Eye Film and past graduates of the Media Learning Company.



# Adult courses

We offer a variety of courses to support you to upskill in your current industry, retrain to change career direction or learn a new skill or hobby for fun. We also offer employer-led courses for continuous professional development, skills bootcamps and bespoke courses created around the needs of your business. Our courses vary in length and level and take place both in the daytime and evenings.

## English for Speakers of Other Languages

City College Norwich

If English is not your first language and you want to develop your skills in speaking listening, reading, writing and grammar, then our ESOL courses are for you.

## Skills Bootcamps

City College Norwich and Easton College

These free, flexible courses are ideal if you are looking to progress in your current industry, want to change jobs, or if you're self-employed.

## Teacher training

City College Norwich

Our teacher training provision, Norfolk Teacher Training Centre, is the ideal route into teaching. Alongside professional and curriculum training you will spend 120 days in the classroom. Visit: [www.norfolkttc.org.uk](http://www.norfolkttc.org.uk)

## GCSEs and Functional Skills

City College Norwich

Gain qualifications and develop your career with our GCSE and Functional Skills courses [www.ccn.ac.uk/adultgcse](http://www.ccn.ac.uk/adultgcse)



## Leisure courses

A Taste of the Middle East Cooking Club

Beginners Machine Sewing Skills

British Sign Language for Beginners

Dark Room Photography

Introduction to Criminology

## Professional development

Cybersecurity

Culinary Skills

Hair and Beauty

Finance and Administration

Plus many more across City College Norwich and Easton College!



Scan the QR code to learn more

# Access to

# Higher Education

CAVA

Want to study for a degree but don't have the qualifications?

Get to where you want to be with an Access to Higher Education course

Access to Higher Education (HE) courses offer an excellent starting point, helping you gain the skills and qualifications needed to progress to degree-level study and pursue your chosen career. Our Access to Higher Education Diplomas, validated by the Cambridge Access Validating Agency (CAVA), are designed to prepare you for university and beyond.

These flexible Level 3 qualifications are a well-recognised alternative to A Levels, designed with both career progression and employer needs in mind. Many of our diplomas align with Local Skills Improvement Plans and the broader demands of the local economy, preparing you for further study and employment in rapidly developing industries.

You will build study skills through our academic development programme, with guidance from your course leader throughout. Our dedicated Access to HE team will also support your university application, whether you continue your studies with us or apply elsewhere.

## Am I eligible to study?

To study an Access to Higher Education course you need to meet the following criteria:

- ♥ Aged 19+
- Have a grade C (grade 4) or above in GCSE English and maths



## Access to Higher Education courses:

Creative Arts

Computing (new for 2026/27)

Engineering

Humanities and Social Sciences

Land-Based Studies (Animal and Countryside Management)

Science (Health)



Access to Higher Education Diplomas get you degree-ready in just one year!

Scan the QR code to find out more or visit [www.he.ccn.ac.uk/access-to-he](http://www.he.ccn.ac.uk/access-to-he)

# Ready for a degree?

Study with us in the heart of Norwich

UEA  
University of East Anglia

Degrees awarded by UEA



Small classes with maximum support from expert lecturers



We're flexible - our courses fit around your life and career

Unlock your potential with our wide range of course options

- Additional Needs and Disabilities
- Animal Science
- Aircraft Maintenance Engineering
- Childhood and Youth Studies
- Construction and Civil Engineering
- Creative Media
- Digital Technology
- Electrical and Mechanical Engineering
- Health and Mental Health
- Leadership and Management
- Social Sciences
- Sport, Health and Exercise Science
- Teacher Training
- Wildlife and Conservation
- Youth Work
- Zoology



Scan the QR code to learn more

Continue your studies with us and receive up to £1,000 with our progression bursary!



# Connect with City College Norwich

## Explore our website

Our website is your go-to hub for everything you need to know about our college and sixth form. Whether you're curious about course content, need guidance on financial support, or want answers to practical questions like how to get to campus or where to grab a bite, it's all there.

Take a virtual tour and experience the campus from wherever you are — get a feel for the vibrant student life, modern facilities, and the welcoming atmosphere that makes our college unique.

[www.ccn.ac.uk](http://www.ccn.ac.uk)



## Live Chat support

Got questions? We've got answers - in real time.

Our Live Chat feature connects you directly with knowledgeable course advisers who are ready to help with anything from course choices to application tips. Whether you're just starting to explore your options or finalising your plans, we're here to support you every step of the way.

Available directly on our website during business hours.

## Stay connected on social media

Want a glimpse into daily life at college? Follow us on social media to see what our students are up to, get behind-the-scenes campus content, and stay updated on events, deadlines, and announcements.

Join our community and be part of the conversation.

 **City College Norwich**

 **@citycollegenorwich**

 **City College Norwich**



# Open Events and campus tours

If you'd like a real taste of what it's like to study at our Sixth Form Centre and discover the incredible opportunities we offer, come along to one of our Open Events. Held during the autumn and summer terms, these events are the perfect chance to explore your next steps and see what makes our college special.



## At our Open Events you can:

- Explore your options and find out about courses you are interested in
- Take a tour of our campus and view our industry-standard facilities and equipment
- Speak to students and staff about life at our college and what to expect
- Find out about how to apply and ask about finance, travel and student support

Whether you're in Year 11 and ready to explore your options and submit an application, still deciding on your next steps and looking for guidance, or in Year 10 and eager to get a head start for the year ahead, our Open Events are designed to help you make informed choices about your future and find out how we can support your journey.

Find out more and sign up to one of our Open Events at [www.ccn.ac.uk/openevents](http://www.ccn.ac.uk/openevents)

## Upcoming Open Events

**Friday, 3rd October 2025**  
4pm to 7pm

**Saturday, 4th October 2025**  
10am to 1pm

**Taster day - Saturday, 6th December 2025**

**Saturday, 20th June 2026**  
10am to 1pm

Can't make it to one of our Open Events? No problem! We're excited to offer campus tours, giving you the chance to explore our sixth form. You will be shown around by one of our friendly Student Ambassadors or a member of our Customer Service Team, who will help you get a real feel for life on campus.

During your visit, you will explore our facilities, check out some of our study spaces, and see what makes our college a great place to learn and grow. Our Advice and Guidance Team will also be on hand to answer any course-specific questions you might have.

Book your tour now at: [www.ccn.ac.uk/campustours](http://www.ccn.ac.uk/campustours)

## Contact us

City College Norwich  
Ipswich Road  
Norwich  
NR2 2LJ



**t: 01603 773311**

**e: [information@ccn.ac.uk](mailto:information@ccn.ac.uk)**

## Find us on social media



**City College Norwich**



**@citycollegenorwich**



**City College Norwich**



**Scan the QR code  
to visit our website  
[www.ccn.ac.uk/alevels](http://www.ccn.ac.uk/alevels)**



We are continually updating the courses we offer to meet student demand and industry needs. All information included in this prospectus is correct at the time of print in August 2025 but subject to change. For the most up-to-date information, please visit our website at **[www.ccn.ac.uk/alevels](http://www.ccn.ac.uk/alevels)**