



Create your future

2025/26

A Level Course Brochure



Welcome

The next step on your education journey is an exciting one because you have the freedom to choose what and where you want to study.

.....

Our Sixth Form at City College Norwich offers unrivalled student experiences, opportunities, and support, in a mature learning environment that is very different to being at school.

Being a student with us means you will benefit from the specialist expertise of dedicated and highly qualified A Level teachers, excellent study facilities, and the chance to explore your interests outside of the classroom - from national and international trips to participating in electives and College-wide events.

As an inclusive Sixth Form, we can help you reach your chosen goal, whatever that is. Over three quarters of our students progress to university, but an increasing number are starting careers or apprenticeships once they have completed A Level study. One thing you can be certain of, at City College Norwich you are treated as an individual and we'll support your ambitions whichever path you choose.

From day one, you'll receive expert guidance in designing a study programme which best suits your needs and helps you reach your chosen next steps.

You will get regular support from your pastoral tutors through dedicated tutorial sessions. Your tutor will guide you through UCAS, apprenticeship, or employment applications, to ensure your journey after A Levels is smooth and successful.

We will treat you as an individual, taking into account your interests, aspirations and any learning needs you may have, as well as providing other pastoral support. In return we will expect you to work hard, attend fully, and to act on the advice of your teachers and tutors, taking responsibility for completing work to the best of your ability and challenging yourself in your learning.

We value our students and we make sure their voices are heard. At City College Norwich, you can become a Sixth Form student ambassador, be on the student council, and take on opportunities across College with the Students' Union or the governing board. You are listened to, involved in decision making, and given responsibility to lead the way in projects to help shape your Sixth Form.

If you've not been already, we look forward to welcoming you so that you can discover for yourself all that City College Norwich has to offer, get a feel for what it's like to study here, and ask us any questions you may have.



Jerry White
Principal

More than just A Levels

**We know, as a learner and an individual,
you are unique.**

**That's why we offer you so much more than a traditional
sixth form. We offer you experiences and opportunities
that are simply not available elsewhere.**

We recognise you as an individual and as an adult, providing you with the space and opportunity to develop and explore your interests and passions by taking part in activities in and outside of the classroom.

You will be based on City College Norwich's bustling Ipswich Road campus with fantastic professional and leisure facilities right on your doorstep such as our theatre, restaurant, cafés and studio spaces.

We believe in a safe and inclusive space where you will be provided with excellent progression routes to take you wherever you want to be, whether that's further study at university, starting an apprenticeship or entering full time employment.

Why study with us?

Expert teachers, large choice of courses, student experience.
There are lots of reasons why hundreds of students choose
to study with us every year, here are just three:



1

More than a qualification

Your time at sixth form is about much more than gaining a qualification. You will be treated as an adult and an individual and will be supported to explore your passions and interests.

You will be encouraged to take advantage of all City College Norwich has to offer, from trips and events to clubs and societies, you're sure to make new memories and new friends.

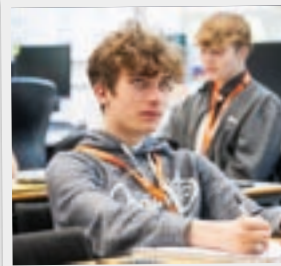


2

Outstanding support

Our experienced A Level teachers and specialist group support tutors are always on hand to ensure you receive the best support possible during your time at our Sixth Form Centre.

Whatever your educational and personal needs, we will help you to progress and achieve your ambitions by guiding and supporting you every step of the way.



3

Student success

We are proud to have a consistently high A Level pass rate. The majority of our students head to their first choice destinations after leaving us, including some of the top Russell Group universities in the UK.

We help to choose subjects that work for you to ensure you succeed, enjoy your studies and are well set for your chosen career path.

Getting where you want to be

Students are given individualised support, advice and guidance to achieve their potential and progress onto their next educational or employment pathway.



Our students progress on to amazing destinations after completing their A Levels, which set them on their way to achieving their goals and aspirations.

Many of our students choose to progress on to university, with a large majority gaining places on their first or insurance choices. Due to the outstanding progress of our students, many do better than they expect. In previous years, some of our

students secured places at Russell Group universities through UCAS Adjustment, having not previously considered them.

Although the majority of our students choose to progress to university, a large number also choose to go onto Apprenticeships or straight in to employment.

We also see students deferring their university places for a year to allow them to travel and gain once-in-a-lifetime experiences.

Student Destinations

Here's where some of our students progressed on to after completing their A Levels at City College Norwich.

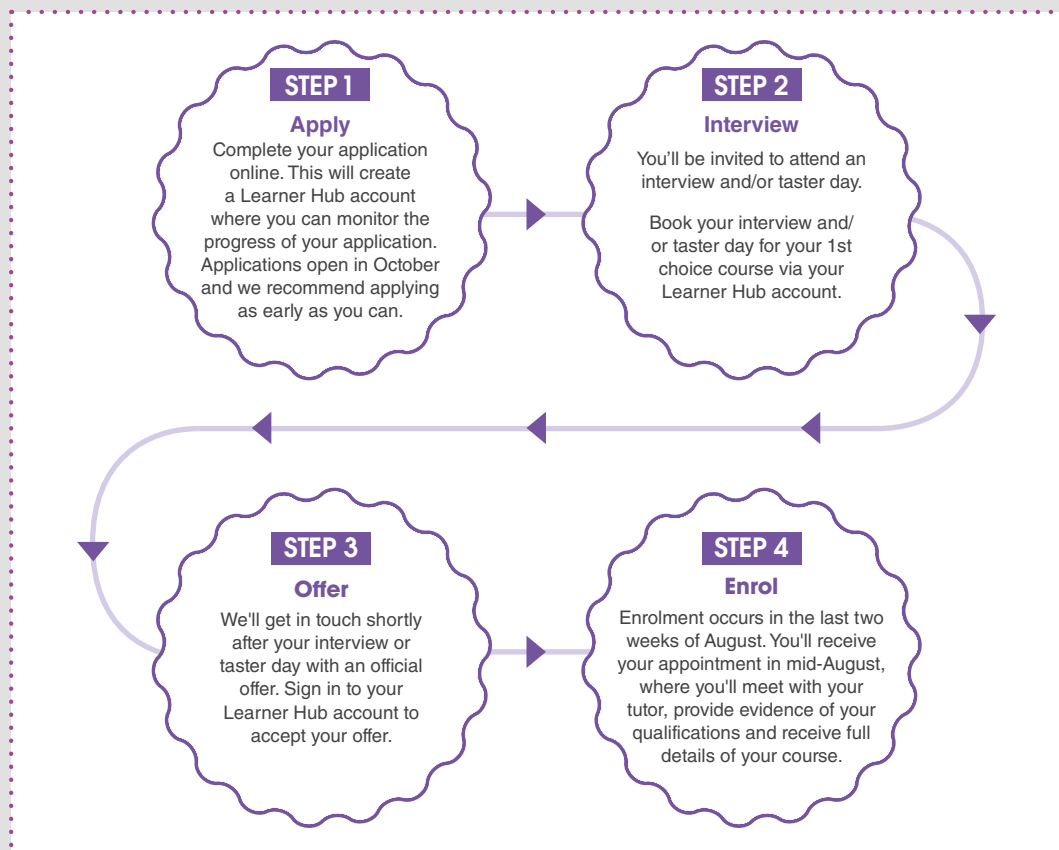
| University | Degree |
|---------------------------|--|
| University of Bristol | Veterinary Science |
| City College Norwich | Psychology with Sociology |
| University of Chichester | Modern History |
| University of Cumbria | Primary and Early Years Education with QTS |
| University of Derby | Policing and Investigations |
| University of East Anglia | Biochemistry |
| University of East Anglia | Chemistry with a year in industry |
| University of East Anglia | Maths |
| University of East Anglia | Occupational Therapy |
| University of East Anglia | Pharmacology and Drug Discovery |
| Easton College | Animal Science |
| University of Exeter | Medicine |
| University of Kent | Film with a year abroad |
| University of Lincoln | Conservation of Cultural Heritage |
| University of Lincoln | Psychology with Clinical Psychology |

| University | Degree |
|--|--------------------------------------|
| University of Liverpool | Geography and Oceanography |
| London School of Economics and Political Science | Sociology |
| Manchester Metropolitan University | English with Multimedia Journalism |
| Nottingham Trent University | Biomedical Sciences |
| Nottingham Trent University | Accounting and Finance |
| Nottingham Trent University | Forensic Science |
| Northumbria University | Mechanical Engineering |
| Norwich University of Arts | Animation |
| University of Plymouth | Physics |
| University of Reading | Art and History of Art |
| Royal Holloway, University of London | Geography |
| University of Suffolk | Nursing |
| University of Sussex | Politics and International Relations |
| University of Warwick | Politics |
| University of the West of England | Digital Media |
| University of York | English |

How to apply

Got a question about your application?

Get in touch with our Admissions Team at City College Norwich via admissions@ccn.ac.uk or 01603 773 008



Apply online

Visit ccn.ac.uk

International students

If you have come to live in the UK from overseas and would like to study here, please contact our International Adviser at international@ccn.ac.uk or +44 01603 773 071 for help and guidance on how to apply.

Help you choose

If you are applying through "Help You Choose" via your school, you will be emailed a link to create your personal Learner Hub account.

Remember to keep your login details safe

Please use this to monitor your application and book your interview and/or taster day.



Keep your options open

We advise you have a back up plan and apply for two courses

Apply early

Our courses fill up quickly!

Get your application in early to avoid disappointment.
You can apply from 1 October 2024

A Level Taster Days

You will be invited to one of our Taster Days on either Saturday 25 January or Wednesday 2 July 2025



Courses

.....

| | |
|--|-----------|
| Art | 12 |
| Biology | 14 |
| Business | 15 |
| Chemistry | 16 |
| Drama & Theatre Studies | 18 |
| English Language | 20 |
| English Language & Literature | 21 |
| English Literature | 22 |
| Environmental Science | 24 |
| Film Studies | 26 |
| Further Mathematics | 27 |
| Geography | 28 |
| History | 29 |
| Mathematics | 30 |
| Media Studies | 31 |
| Photography | 33 |
| Physics | 34 |
| Politics | 36 |
| Psychology | 38 |
| Religious Studies | 39 |
| Sociology | 40 |
| Textiles | 41 |
| Extended Project Qualification | 42 |

A Level Art

Entry requirements

A minimum of a grade 4 must have been achieved in GCSE English Language. If an art-based GCSE has been taken, a minimum of a grade 5 must have been achieved. We will consider applicants with a suitable portfolio of evidence if the above has not been achieved.

What will I learn?

During this course, you will develop your ability to think and work as an artist by taking part in a range of activities and processes that will allow you to explore the use of visual language.

Drawing and painting will be covered extensively using a range of materials such as inks, charcoal, watercolours, acrylics and oil paint. You will also focus on printmaking, using methods such as drypoint etching, lino and various kinds of monoprinting. As the course progresses you will be able to have more choice over your materials, with lots of mixed media and sculptural methods available to you on top of what we will have covered as a class. You will also be able to use photography equipment and experiment with darkroom processes such as photograms which can be a useful addition to more traditional techniques.

Your work will be linked to your own personal themes and to the work of other artists and art movements. You will also learn to think and write analytically about your own work and that of other artists.

Unique opportunities

As part of the course, you will be encouraged to visit galleries and exhibitions both locally and nationally. These have included the Turner Prize exhibition and shows featuring the work of Gauguin, Rauschenberg and Joseph Beuys. Each year there

is also a visual arts trip abroad to a city renowned for its artistic heritage. Recent destinations have included Berlin and New York. Alongside this, you will also have the opportunity to exhibit your work to the public at our annual visual arts show.

How am I assessed?

You will be assessed through a range of practical work including experiments contained in a work journal, finished pieces of coursework and a response to a theme set by the exam board. You will also complete a written personal study.

Is it suitable for you?

If you have an interest in art and the world around you, this course could be for you. To be successful, you will need to be able to work independently and with enthusiasm. You should also enjoy visiting galleries and exhibitions.

What next?

Successful completion of this course can allow you to study a range of art and design related courses including Art Foundation and degree level courses in related subjects at college, art school or university.

This course can also assist you in your progression to a wide range of careers in art and design and other creative industries. Strong art-based training will also allow you to develop a variety of valuable transferable skills including creative ideas development, problem solving, contextual interpretation, visual communication, team working and presentation skills that can be applied to a number of other career options.



A Level Biology

Entry requirements

A minimum of a grade 6 must have been achieved in GCSE Biology (or 6.5 for combined science).

A minimum of a grade 5 must have been achieved in GCSE Maths and GCSE English Language.

What will I learn?

Biology is the study of life, from the molecular level up to ecosystems. This course combines theoretical knowledge with practical laboratory work and will allow you to develop vital skills such as how to interpret data to solve scientific problems. Essential principles are taught in the context of contemporary themes, such as how our actions enhance the antibiotic resistance of bacteria, and lifestyle factors that increase the risk of cancer and heart disease.

In the first year, you will focus on topics including biological molecules, cells and organelles, how the respiratory and circulatory systems work in different organisms, and how genes code for proteins.

In the second year, you will study photosynthesis and mitochondrial respiration, the nervous and endocrine system in mammals, different mechanisms to regulate gene expression, and how genetic variation affects populations, evolution and ecosystems.

Unique opportunities

There will be opportunities to participate in external visits linked to the course. Past trips have included a 'mock autopsy' experience, visits to the University of East Anglia to experience genetic engineering techniques and a biodiversity conference at Norwich Castle.

How am I assessed?

You will be assessed through three exams at the end of the course that will test your subject knowledge. In the exams you will be asked to apply mathematical and practical knowledge but also to evaluate, analyse and interpret sets of data.

Your investigative and practical skills will also be assessed throughout the course and contribute to a Practical Endorsement in addition to your A Level grade. Many university courses require a pass in this.

Is it suitable for you?

Biology is suited to you if you are interested in the living world and how it works. You will need to be prepared to work independently to assimilate a large amount of subject knowledge as the course progresses.

You need to enjoy problem solving and dealing with challenges that require some thought. You will also need to apply your knowledge to new scenarios and must be prepared to engage with verbal questioning.

What next?

Students who study biology or medical degrees after A Level Biology can go on to medical careers such as nursing, radiography, and physiotherapy. You could also work in areas such as agriculture, food/water supply, marine biology and conservation.

A Level Business

Entry requirements

A minimum of a grade 5 must have been achieved in GCSE English Language and GCSE Maths. If GCSE Business has been taken, a minimum of a grade 5 must have been achieved.

What will I learn?

You will engage with the world of business through the context of current business developments and real business situations. Learn how management, leadership, problem solving and decision-making can improve business performance within marketing, operations, financial, and HR. You will also explore the interrelated nature of business activities and how they are affected, from small and medium-sized enterprises to multinational corporations and conglomerates not just in the UK but on a global basis. You will also focus on different sectors such as service or manufacturing industries.

Within the course you will analyse competitive environments and markets; assess factors that affect the environment, through ethical resources and sustainability alongside technological factors, whilst looking at how these decisions influence a business environment.

This course can be utilised in a huge range of businesses and management fields and is transferable across many areas of study and professions.

Unique opportunities

You will work with businesses outside of the college whilst incorporating virtual work experience for example with TikTok, CNN Warner Bros Discovery, Uber, Adidas and Warner Music.

This, alongside the course materials and curriculum is a great way to reinforce your business skills and knowledge.

How am I assessed?

You will be assessed throughout the course with topic tests, mock exams, and portfolios. Your final assessment will be 3 exams (2 are based on the curriculum and the 3rd will be based on a specific industry – covering all 4 elements of the curriculum) at the end of the second year.

Is it suitable for you?

You will enjoy this course if you have an interest in the world of business and understanding business behaviour. You need to be confident in simple mathematics tasks such as percentage change and in written English, as you will be expected to be able to demonstrate balanced arguments on paper.

What next?

A Level Business is a great choice for anyone interested in the world of commerce and entrepreneurship. It's a great way to prepare for degree apprenticeships as well as university courses in the fields of business such as business management, administration, accountancy and finance, human resources, marketing, retail, tourism, and international business management. It will equip you with the know-how to start up your own business. Careers range from banking, sales, product management/marketing and general management to working in public sector organisations or charities.

A Level Chemistry

Entry requirements

A minimum of a grade 6 must have been achieved in GCSE Chemistry (or 6.5 for combined science). A minimum of a grade 5 must have been achieved in GCSE Maths and GCSE English Language.

What will I learn?

Chemistry is a hands-on subject that is underpinned by a strong theoretical and mathematical base that seeks to understand the world of matter and how it interacts.

In the first year, you will cover topics such as the structure of atoms and how they form bonds, chemical reactions, the periodic table, quantities and the mole concept, groups of organic chemicals, making new chemicals and analysing the structure of unknown substances.

In the second year, you will cover topics such as rates of reaction and equilibria, acids and bases, further organic chemistry and analysis, electrochemistry and batteries, and transition metals and compounds.

Unique opportunities

The course includes visits to the John Innes Centre and the University of East Anglia as part of our Science, Technology, Engineering and Mathematics (STEM) partnership scheme.

You will also become involved in our popular 'Art through Chemistry' topic where we will be creating art works using several chemical processes such as cyanotypes.

How am I assessed?

You will be assessed through three written papers at the end of the two years. Practicals carried out during the course will be assessed in one of your written exams and on the quality of your lab book.

Is it suitable for you?

Chemistry is ideal for those who are intrigued by the science that they have studied so far. You are likely to do well if you enjoy practical laboratory work and mathematics and would like to use number work in problem solving.

If you're good with numbers, can retain information, like abstract thinking and love to problem solve, this subject could be for you.

What next?

Successful completion of this course could allow you to go on to study degree level courses in a variety of subjects including chemistry, environmental science, medicine, pharmacy, dentistry, veterinary science or biology. Some universities have identified chemistry as one of the subjects they prefer applicants to have studied at A Level.

Studying Chemistry can open up a variety of career opportunities in areas including healthcare, research science, forensic science, medicine, dentistry and veterinary science. An A Level in Chemistry can also help you to develop many transferable skills that are appreciated by many employers in non-chemical and science based careers.



A Level Drama & Theatre Studies

Entry requirements

A minimum of a grade 5 must have been achieved in GCSE English Language. If GCSE Drama has been taken, a minimum of a grade 5 must have been achieved.

What will I learn?

This course will allow you to learn how to deconstruct, analyse, interpret and perform play texts from a wide range of influential writers, as well as have the opportunity to devise your own original piece of theatre.

You will develop movement, vocal, communication and characterisation skills as well as learn to use drama related language and terminology. Alongside this, you will also have the opportunity to study plays from the point of view of a director, designer, performer and critic.

You will learn about theatre history and look in detail at the work and theory of significant theatre practitioners.

Unique opportunities

You will take part in two public performances: one will be scripted and the other will be put together by students on the course, based on a set theme or topic. There will also be a number of opportunities to develop additional skills in workshops on topics such as stage combat, puppet making, lighting operation and budgeting for performance companies.

How am I assessed?

Assessment is through practical work, performance, coursework and written examination. Classes are high energy and physical with a combination of both group work and the development of individual skills.

Is it suitable for you?

You will need to enjoy watching and participating in live theatre and to be articulate in your writing and in the spoken word.

You also need to be tenacious and patient when rehearsing for your live shows.

It is essential that you are a team player as you will be working in teams for most of the course – having a good sense of humour helps too!

What next?

Successful completion of this course can help you progress on to study a degree level course at college, drama school or university in a performance related subject.

The skills you develop on this course can also help you access a range of future career opportunities including director, actor, designer, playwright, stage management, theatre management, theatrical agent, technician, broadcasting, media presenting, arts journalism, education, drama therapy and script-writing. Skills you develop on this course are also beneficial for any role that is public facing.



A Level English Language

Entry requirements

A minimum of a grade 5 must have been achieved in GCSE English Language and Literature. We may also look at your other GCSE essay-based subject results.

What will I learn?

English Language considers how and why the written and spoken word is used for different purposes and how it represents events and people in different ways. You will read a wide variety of non-fiction texts from newspaper articles to spoken language transcripts. You will be encouraged to think about how the writer represents themselves, how they represent a topic and how the reader is positioned.

Alongside this, you will consider how writers and speakers represent the factors which influence our language choices: gender, sexuality, region, social background, occupation and consider the linguistic theories which underpin these ideas.

In the second year, students will study how children learn to read and write using different theories and academic approaches. They will also examine how writers position themselves and their ideologies in editorial writing, analysing how this is done and writing responses to language topics in the media.

Unique opportunities

The course provides opportunities to take part in exciting and interesting extra-curricular trips and visits which tie in with the texts you are studying. In previous years, our students have visited New York and Paris.

We arrange for outside speakers such as playwrights, novelists and creative writers to visit the College to help with coursework production.

How am I assessed?

In the second year, you will produce a piece of non-exam assessment coursework (20% of the course) which includes a short piece of free-choice creative writing and an investigation into an area of linguistic variation. In addition to this, students will sit two 2.5-hour exams worth 40% each, at the end of the 2-year course.

Is it suitable for you?

A Level English Language combines well with the majority of other A Levels, but in particular those that are essay based by nature. Please note, you are not able to study both English Language and English Language & Literature (combined) at A Level.

If you have a fascination with the way that words can create atmosphere, change moods or provoke change, this course could be for you. You will need to enjoy discussing ideas and looking beyond the surface meaning of words.

What next?

Achieving an A level in English Language can lead onto a wide variety of related degree courses. Whilst this course provides particularly good grounding for those aiming for a career in Journalism, Media or Creative Writing, it also offers a wide variety of transferable skills that will be an asset in any career that requires good language, communication and analytical skills.

A Level English Language & Literature

Entry requirements

A minimum of a grade 5 must have been achieved in GCSE English Language and GCSE English Literature. We may also look at your other GCSE essay based subject results.

What will I learn?

This course explores a variety of texts from different places, periods and genres that are written for different audiences and purposes. These include novels, newspapers, journals, advertisements, blogs, plays, speeches, poems, short stories and diaries.

You will be encouraged to think about the nature of language, consider how writers and speakers are affected by the context in which they live and how they have chosen to communicate.

Alongside this, you will also study revered writers and poets from the literary canon including works from Margaret Atwood, F. Scott Fitzgerald, Carol Ann Duffy and Tennessee Williams.

Unique opportunities

The course provides opportunities to take part in exciting and interesting extra-curricular trips and visits which tie in with the texts you are studying. In previous years, our students have visited New York and Paris.

How am I assessed?

There are two exams at the end of the second year, as well as a coursework project. The exams are worth 80% of the final grade and the coursework is worth 20%.

Is it suitable for you?

This is a challenging, yet rewarding course, suitable for those with the desire to explore the subtleties of language and develop into independent readers and writers.

This course is ideal if you enjoy reading and writing and have a genuine interest in exploring how the English language can be used to create specific effects and evoke responses. You will need to enjoy discussing ideas and looking beyond the surface meaning of words.

What next?

Successful completion of this course can help you progress on to study a degree level course at college or university in a variety of related subjects.

This course provides a particularly good grounding if you're aiming for a career in journalism, media or creative writing. It also allows you to develop a range of transferable skills that will be an asset in any career that requires good language, communication and analytical skills.

A Level English Literature

Entry requirements

A minimum of a grade 5 must have been achieved in GCSE English Language and GCSE English Literature.

What will I learn?

This exciting and diverse course will allow you to explore the work of challenging and iconic writers of poetry, prose and plays across your two years of study. In year 1, you will study all three set texts through a tragic lens, addressing key elements of the tragic genre, such as tragic settings, the representation of heroes and villains and the significance of tragic fate, to name but a few. In the second year, you will study a range of texts which feature elements of political and social protest. There is also the opportunity to examine a personal choice of poetry and prose texts through the lens of both feminism and ecocriticism, as part of the non-examination assessment unit.

This course will prepare you with a variety of transferable skills for both further study and employment; it is perfect for lovers of the written word and those who are passionate critical thinkers. You will also engage in thought-provoking literary debates and discussions with your peers and develop your perceptive, close reading and writing skills in relation to many different literary texts and concepts.

Texts you will study across the two years:

- William Shakespeare 'Othello'
- William Shakespeare 'King Richard II'
- F. Scott Fitzgerald 'The Great Gatsby'
- Khaled Hosseini 'The Kite Runner'
- William Blake 'Songs of Innocence and Experience'
- Henrik Ibsen 'A Doll's House'

Unique opportunities

All English Literature students are offered a wide range of exciting extra-curricular opportunities. These have included international trips to both New York and Berlin, which have enabled students to gain an independent insight into key settings for their set texts and wider reading materials. Learners have also enjoyed a trip to the Theatre Royal in Norwich to observe a matinee performance of 'The Kite Runner' and a trip to the Globe Theatre in London to watch a performance of Shakespeare's 'Othello'.

How am I assessed?

Assessment takes place at the end of the first year through one full internal written examination, lasting 2.5 hours. There are then two externally assessed written papers at the end of the second year, which will account for 80% of the overall A Level grade, alongside two non-examination assessments, which will account for the remaining 20%.

Is it suitable for you?

If you have a passion for the written word, curiosity for characters, enthusiasm for diverse text choices, and creative thinking this course is for you. To succeed on the course, you must be open to different views and interpretations of literary texts and, above all, have a genuine passion for reading.

What next?

A Level English Literature will provide you with a range of skills for careers which require effective communication and analytical skills. Career paths include journalism, law, writing, teaching, publishing, editing and PR, to name a few.



A Level Environmental Science

Entry requirements

A minimum of a grade 5 must have been achieved in GCSE English Language, GCSE Maths and GCSE Biology or GCSE Chemistry (or 5.5 for combined science).

What will I learn?

This course will give you a deeper understanding of the world we live in and allow you to develop a variety of key skills that will equip you on your journey to working in science.

You will learn about living and physical environments, energy resources, pollution, biological resources and sustainability. You will also develop key skills including communication, teamwork and critical thinking.

Environmental Science is a heavily practical subject that will see you being out in the field collecting data and in labs carrying out experiments on a regular basis. This is the ideal subject for students looking to understand issues such as climate change and other human impacts on the natural world.

This course goes well with subjects such as geography, biology, physics and maths.

Unique opportunities

During this course you will get the opportunity to visit a wide range of fieldwork locations to learn about the environment and conservation from expert organisations such as Norfolk Wildlife Trust. You will also get the opportunity to attend conferences on biodiversity and climate change when available locally.

How am I assessed?

You will be assessed through two exams at the end of the two-years course and practical skills. 10% of the overall assessment will involve demonstrating mathematical skills and at least 15% of the overall assessment will test your knowledge, skills and understanding through practical work.

Is it suitable for you?

This course is an excellent choice for students interested in the sustainability of our planet and how humans are impacting the world around us.

What next?

This course will help you develop a variety of key skills that will allow you to study degree level courses in a range of related subjects and other science courses.

This course can also help you to work in environmental and ecological consultancy or working in labs performing tests and experiments. You could go on to work for organisations such as the Environment Agency or Natural England.



A Level Film Studies

Entry requirements

A minimum of a grade 5 must have been achieved in GCSE English Language. If GCSE Film Studies has been taken, a minimum of a grade 5 must have been achieved.

What will I learn?

This course encourages you to watch, analyse, discuss and write about films from different perspectives: from a textual and aesthetic level, through to analysing the range of meanings generated by film in different social and historical contexts and how they articulate our world to us. Critical approaches to films will engage you with a range of philosophical debates around cinema: from psychoanalytical to postmodernist.

Following the Eduqas syllabus, you will focus on The Hollywood film history (Alien, Night of the Living Dead, Vertigo) and movements (German Expressionism), along with the opportunity to study a range of critically acclaimed contemporary films such as: Get Out, Promising Young Woman, Under the Skin, Little Women, Joker, and Trainspotting. European and world cinema: Pan's Labyrinth, Portrait of a Lady on Fire, Roma, and Parasite. Documentary and experimental film: Exit Through the Gift Shop (by Banksy), and David Lynch's Mullholland Drive.

Alongside this you will learn to apply what you have learnt by shooting and editing tasks throughout the year. Workshops in creative writing, cinematography, lighting, sound, and editing will hone your film production skills so that in the second year you will produce either a short film, or screenplay with photographed storyboard, as part of your coursework.

Unique opportunities

Every two years we run a residential trip to New York with excursions to the Museum of Moving Image, NBC studio Tours, Radio City, and a tour of Film and TV locations. On the other years we run a residential trip to the Berlin Film Festival where in addition to film museums and historical sites, you will go to screenings and Q&A sessions, and red-carpet star spotting (previous stars spotted include John Malkovich and Steven Spielberg).

How am I assessed?

You will be assessed through project work and written examinations. Written exams make up 70% of the final grade whilst the remaining 30% will be coursework that focuses on completing either a short film or screenplay.

Is it suitable for you?

If you love film and are open to studying a wide range of different types of films from blockbusters, indie, foreign language films and experimental cinema, this course is for you.

You will need to have good analytical skills and an ability to apply these to the world around you. Good writing and communication skills are also essential as there is a lot of discussion and essay writing. Most importantly you will be creative, as the course involves creative writing and filmmaking.

What next?

You can go on to study a range of degree level courses in subjects such as film making, VFX or other arts subjects. You could go on to study critical subjects such as English, politics or sociology.

This course can also assist you in your progression to a wide range of careers in the creative industries.

A Level Further Mathematics

Entry requirements

A minimum of 6 GCSEs at a grade 4 or above must have been achieved. A minimum of a grade 7 must have been achieved in GCSE Maths. Please note: A Level Further Maths must be taken with A Level Maths unless A Level Maths has already been achieved.

What will I learn?

This course will broaden and deepen the knowledge that you will gain when studying A Level Mathematics which must be taken alongside this course.

You will further develop your mathematical skills, be introduced to new topics which are vital if you are intending to study a mathematics degree and directly apply them to solving problems. You will see how the subject can be used to show what is happening and what might happen in different real life situations.

You will cover the compulsory core (pure) mathematics unit and two or three optional units in areas such as pure mathematics, statistics and mechanics. Please note, options may vary from year to year depending on demand.

How am I assessed?

Assessment is through four written exams at the end of the second year. These are made up of shorter questions and longer questions that require you to put your problem solving skills into practice.

Is it suitable for you?

You will need to have a strong understanding of GCSE level mathematics and want to do mathematics every day.

The course includes deep concepts that require you to put in the effort to understand them. To succeed, you will need to think clearly and logically and, most importantly, persevere when you can't immediately see the solution.

What next?

This subject is essential if you want to go on to degree level courses rich in mathematics. It can also lead you to degrees in other subjects such as science, economics, engineering or computing.

The skills you will learn during the course will be useful in a wide range of careers including science, engineering, computing and management.

A Level Geography

Entry requirements

A minimum of a grade 5 must have been achieved in GCSE English Language. A minimum of a grade 4 must have been achieved in GCSE Maths. If GCSE Geography has been taken, a minimum of a grade 5 must have been achieved.

What will I learn?

Geography is the study of the world around us. Through your A Level studies, you will learn the theoretical basis of physical and human geography. This will enable you to identify how people and the environment interact and the issues that arise from these interactions such as sustainability, globalisation and climate change.

During the course, you will focus on a variety of topics based on physical geography and human geography. These include water and carbon cycles, coastal landscapes, diseases, migration and conflict. You will also take part in activities based on geography investigation and develop geographical skills that will see you conducting fieldwork, investigating data collected in the field and developing cartographic, graphical, statistical and ICT skills.

Unique opportunities

You will complete four days of fieldwork over the two years. These include trips to the Norfolk coast, Norwich and towns within Norfolk. There is also the opportunity for trips further afield, previous trips have been to Iceland, the Lake District, and London.

How am I assessed?

You will have three examinations at the end of the second year. You will also complete an individual investigation which must include data collected in the field.

Is it suitable for you?

You will enjoy this subject if you have an active interest in the world around you. To do well, you will need good English and Maths skills and the ability to interpret a variety of information such as data, maps and images.

What next?

An A Level in Geography will help to prepare you for a wide range of degree level courses and has been identified by selective universities as one of the subjects they prefer applicants to have studied at A Level.

The skills you will develop during this course will also help you move on to a variety of careers in areas such as conservation and environmental management, town planning, teaching or international development. These skills will also be useful if you're interested in working in the voluntary sector on conservation and humanitarian projects.

A Level History

Entry requirements

A minimum of a grade 5 must have been achieved in GCSE English Language. If GCSE History has been taken, a minimum of a grade 5 must have been achieved.

What will I learn?

A Level History covers a variety of modern European topics including many events which have shaped the world we live in today.

During your course, you will focus on a range of topics including Germany and West Germany from 1918-89, the rise and fall of fascism in Italy from 1911-46, the British experience of warfare from 1790-1918 and the historical controversy of why the First World War broke out in 1914.

This course helps to explain our present and collective past as a story, or a series of stories, where the content shifts according to the storyteller.

Unique opportunities

You will have the opportunity to go on lecture trips and hear professional historians give information and answer questions about their specialist areas of historical expertise.

How am I assessed?

You will be assessed with a series of essays throughout the course and, ultimately, through exams and coursework in the second year.

Is it suitable for you?

You will be successful in history if you have a natural interest in understanding historical events and can look at key events from different perspectives. You will be looking at source material of a quite complex nature and you need to be able to understand and evaluate the arguments contained within primary and secondary sources and utilise these effectively in your essay writing.

What next?

A Level History will prepare you for a wide range of degree courses such as history, politics or law. However, skills such as how to logically interpret and evaluate evidence that you will learn during the course, will be useful in a wide range of other subjects. History is one of the subjects selective universities prefer applicants to have studied.

Skills developed during this course will also be invaluable in numerous careers such as civil service, law, journalism, teaching, archaeology and museum work.

A Level Mathematics

Entry requirements

A minimum of a grade 6 must have been achieved in GCSE Maths.

What will I learn?

This course will not only allow you to develop new mathematical skills, but will also show you how to use Maths to solve problems. You will see how the subject can be used to show what is happening and what might happen in different real life situations.

You will cover three main topics during the course. These will be pure mathematics, statistics and mechanics.

How am I assessed?

You will be assessed through three exams at the end of the second year. These are made up of shorter questions and longer questions that will require you to put your problem solving skills into practice.

Is it suitable for you?

A Level Mathematics can be challenging so resilience and commitment is essential. To succeed, you will need to be able to think clearly and logically. Most importantly, you will need to persevere when you can't immediately see the solution to a problem.

What next?

Successful completion of this course can lead to a variety of degree level courses in subjects such as mathematics, science, economics, engineering or computing. However, skills such as clear and logical thinking, which you will develop during this course, will be useful in a range of other subject areas. Mathematics is one of the subjects selective universities prefer applicants to have studied.

Skills developed during this course will also be useful in a wide range of careers in areas such as science, engineering, computing and management.

A Level Media Studies

Entry requirements

A minimum of a grade 5 must have been achieved in GCSE English Language. If GCSE Media Studies has been taken, a minimum of a grade 5 must have been achieved.

What will I learn?

This course will allow you to appreciate how important the media is in our lives, both as consumers and producers, through the analysis of contemporary, global and historical media.

During the course, you will study nine media forms: television, film, radio, newspapers, magazines, advertising & marketing, online, social & participatory media, video games and music videos. This study will involve analysing and understanding the various forms by applying the concepts of representation, audience, media language and industry.

Alongside this, this course will allow you to develop practical production skills by using our excellent media resources, including high quality digital cameras, lighting kits and sound equipment, to create your own media product. You will also learn how to use Adobe Creative Cloud software including Photoshop, Premiere Pro and InDesign which is essential for careers in the media and related industries.

Unique opportunities

Every two years, we run a residential trip to New York with trips to European destinations, such as Paris and Amsterdam, running every other year.

Students have enjoyed day trips to a local cinema to attend free screenings as part of the INTO Film Festival, the Harry Potter Studio Tour, British Film Institute study days and discussions and workshops at the Norwich University of the Arts.

How am I assessed?

Assessment is through exams, which make up 70% of your overall grade, and coursework which makes up 30% of your overall grade. Exams will take place at the end of the second year.

Is it suitable for you?

This course is ideal if you're interested in the media, its content and related organisations. You will need to be creative and well organised to complete your practical work and enjoy analysing how meaning is constructed in media products.

What next?

Successful completion of this course will help support your progression to university level study or professional qualifications in a wide range of subject areas. These include media production, media studies, film studies, digital film production, journalism, advertising/marketing, television production, events and exhibition management.

This course will also help you develop a variety of skills such as creative media production, time management, critical analysis and interpretation and debating, that can be useful in a wide range of careers.



A Level Photography

Entry requirements

A minimum of a grade 4 must have been achieved in GCSE English Language. If an art-based GCSE has been taken, a minimum of a grade 5 must have been achieved. We will consider applicants with a suitable portfolio of evidence if the above has not been achieved.

What will I learn?

You will learn manual camera controls, studio lighting, take advantage of digital editing and analogue darkroom facilities to make photographic prints, whilst learning how to express yourself and communicate through visual methods.

You will explore a range of well-established photographers and artists, making connections between produced work and your ideas. You will also refine skills in communication, collaboration, creativity and critical thinking; preparing you for progression to higher education or the world of work.

The course is taught in a well-equipped specialist room with high-spec PCs, professional printers and industry standard photographic equipment. You will also have access to our traditional darkroom and our collection of 35mm, medium format and large format analogue cameras.

Essential materials for the course are provided, including DSLRs – though there is an advantage to owning your own.

The course is supported and taught by a team of lecturers and technicians who are themselves practicing creatives and have had established careers within the creative industry. This is a perfect opportunity for anyone who wishes to begin their journey into becoming an early career artist.

Unique opportunities

You will have the opportunity to visit galleries and exhibitions both locally and nationally. Previously, these have included Tate Modern, Victoria and Albert, Royal Academy, Sainsbury's Centre for Visual Arts and Norwich Castle Museum. You will also be invited to join us on a yearly residential trip to a city renowned for its artistic heritage. Recent destinations include Berlin, Amsterdam, Paris and New York.

We have strong industry links and recognise the value of experiencing the creative industries. We welcome a range of visiting guest speakers from exciting university course leaders and professional creatives and, at the end of the course, you will showcase your work at our annual Art and Design Show, with potential for interim exhibitions throughout.

How am I assessed?

You will be assessed through a range of practical work including experiments contained in a work journal, finished pieces of coursework and a response to a theme set by the exam board. You will also complete a written personal study investigating ideas in photography.

Is it suitable for you?

This course is ideal if you are curious, independent, initiative and have an eye for a good picture. To be successful, you need to be willing to develop ideas and investigate and analyse images. You will also need to be persistent and hard-working.

What next?

Successful completion of this course can allow you to study a range of art and design related courses including Art Foundation and degree level courses in related subjects at college, art school or university. Students have progressed on to prestigious university level courses.

A Level Physics

Entry requirements

A minimum of a grade 6 must have been achieved in GCSE Maths and GCSE Physics (or 6.6 in combined science).

What will I learn?

Physics is a fascinating subject that examines how the real world (and the rest of the universe) works. It asks about everything, from what existed before the Big Bang to how cars can use less petrol.

This course combines the theoretical study of physics and practical laboratory work that will allow you to analyse data. You will focus on a variety of topics including measurements and their errors, particles and radiation, waves, mechanics and materials, electricity and nuclear physics.

Unique opportunities

You will have many opportunities to learn and practise new skills through hands-on experiments using a wide range of equipment. You will also have the opportunity to watch many demonstrations, including the giant capacitor and the mysteries of the chocolate chip muffin.

How am I assessed?

You will be assessed through three written exams at the end of the two year course. This will include questions on both theory and practical work. A separate certificate confirming your practical skills can also be achieved in addition to your A Level.

Is it suitable for you?

This course is ideal if you can think logically, critically and imaginatively and are willing to work hard. It will help if you enjoy and are good at mathematics (especially algebra) as this course includes some mathematical concepts and theories.

A Level Physics can be challenging and you will need to persevere when you cannot immediately see the solution to a problem.

What next?

Successful completion of this course can help you progress on to study degree level courses in a variety of subjects including science, meteorology, geophysics, computing or engineering. Physics has been identified by selective universities as one of the subjects they prefer applicants to have studied at A Level.

Studying physics can also open up a variety of career opportunities in areas including science, computing and engineering. Skills such as thinking clearly and logically, which you will develop during the course, will also be useful in a wide range of other careers.



A Level Politics

Entry requirements

A minimum of a grade 5 must have been achieved in GCSE English Language, and it is preferable that all essay-based subjects taken are at this level.

What will I learn?

A Level Politics will help you to understand the world around you better. In the first year, you will study how people participate in politics and the UK political system. In year two, you will study political ideas behind politics and the areas of agreement and disagreement between ideologies such as liberalism, conservatism and socialism, as well as global politics, which looks at power within international relations and how the governing of global issues such as conflict and the environment is changing. Studying politics will also help you to develop your skills in analysis, evaluation and written communication.

Unique opportunities

You will have the chance to attend an A Level student conference in Westminster where a number of prominent politicians will talk on topics relevant to your course and answer any questions you have. Recent speakers have included Jeremy Corbyn, Jacob Rees-Mogg and Sajid Javid.

You will also be able to attend talks from guest speakers from the worlds of politics, law and journalism who visit the college during the year, such as the Law Society.

How am I assessed?

You will be assessed through three examinations that will be sat at the end of the second year. Each exam will assess your responses to essay style questions. You are graded based on your knowledge, analysis and evaluation. There will also be a variety of internal assessments throughout the course.

Is it suitable for you?

Politics will suit you if you have an interest in current affairs and how society works. You need to be open to discussing different perspectives on things and communicating this through essay writing – good essay writers get the best grades. It is also a subject you will be able to do much better in if you have an interest in current affairs.

What next?

This course will help you progress on to study a range of degree level courses in subjects such as politics, international relations, history and law. Skills such as analysing and evaluating information, discussion and communicating in writing will also be useful in a wide range of other subjects as well such as English, philosophy and business.

A Level Politics gives you knowledge that would be useful for a career in politics but also develops skills which can help with careers in areas ranging from the civil service and law to management and journalism.



A Level Psychology

Entry requirements

A minimum of a grade 5 must have been achieved in GCSE English Language, GCSE Maths and a GCSE Science subject. If GCSE Psychology has been taken, a minimum of a grade 5 must have been achieved.

What will I learn?

Psychology seeks to answer questions about why people behave as they do, how they think and how they feel. You will look at these questions using a variety of scientific methods such as experiments, interviews and questionnaires.

During your first year, you will study memory, attachment between children and their parents, social influence, approaches in psychology, abnormal behaviour and research methods. In your second year, you will study issues and debates in psychology, gender development, schizophrenia, forensic psychology and advanced research methods.

This course will introduce you to a wide range of studies into the human experience.

Unique opportunities

In addition to being taught by experienced subject specialists, there may be opportunities to extend your learning by attending psychology conferences and specialist talks.

How am I assessed?

You will be assessed through exams, there is no coursework. In the exams, you will be asked to complete short answer questions and essay style questions. You will also be tested on how you interpret data.

Is it suitable for you?

This popular course is ideal if you are keen to engage with a new subject and be taught by experienced, enthusiastic subject specialists. To do well you will need to be able to remember factual information, interpret questions and be able to write concisely. At least 10% of the marks in exams are for mathematical questions so you should be comfortable with basic mathematical skills.

What next?

Successful completion of this course can help you progress on to study a degree level course at college or university in subjects related to psychology. You can also progress on to study related courses such as sports coaching, social sciences and neuroscience.

You can look to progress on to work in related areas such as teaching, business social work or police. Alongside this, you can also progress on to higher level apprenticeships and employment.

A Level Religious Studies

(Philosophy & Ethics)

Entry requirements

A minimum of a grade 5 must have been achieved in GCSE English Language. If GCSE Religious Studies/Philosophy and Ethics has been taken, a minimum of a grade 5 must have been achieved.

About the course

Religious Studies is a rigorous subject that will challenge you both academically and personally. You will be involved in learning about engaging topics through a range of activities including debate and discussion, as well as independent research and reading. The course is split into three parts: philosophy of religion, ethics, and the developments of thought in a major world religion.

What will I learn?

In the philosophy of religion we look at God and whether it's possible that such an idea/being could ever exist (or ever not exist!), the meaning of religious language and whether to believe in religious experiences and miracles.

In ethics, we examine the meaning of right and wrong and apply philosophical ideas about ethics to controversial real world scenarios including euthanasia and animal rights. We ask questions about whether ethical theories can help us know how to behave and if people can live by these theories.

In the developments of religious thought, we examine Buddhism. You will critically engage in the study of religion to examine and debate the teachings of Buddhism and how these form the basis of Buddhist practice, such as meditation and moral principles. We will also look into Buddhist beliefs such as rebirth and karma: are these concepts 'real' or a metaphor for understanding life?

Unique opportunities

This course will really engage you in thinking about and discussing some of the 'big questions' in life – it may very well change the way that you think! As part of our study developments of religious thought, you may have the opportunity to explore religious thought first-hand through a visit to a Buddhist temple and meeting a Buddhist.

How am I assessed?

The course is assessed through two exams at the end of the second year. All questions are essay based.

Is it suitable for you?

The course is suitable for you if you have a genuine desire to question what you think you know (and how you know it). You need to be open to seeing things from different perspectives, but not shy to be critical of different perspectives. It also helps if you like to read, critically engage with difficult material, think very logically and put your ideas down in words in a way that is convincing to others.

What next?

Religious Studies is on many universities' preferred subject lists making it a valuable course when applying to university, especially when considering arts and social science subjects.

A degree in Religious Studies or Philosophy can take you in a wide variety of directions, from journalism and law to youth work, social work and teaching.

A Level Sociology

Entry requirements

A minimum of a grade 5 must have been achieved in GCSE English Language. If GCSE Sociology has been taken, a minimum of a grade 5 must have been achieved.

What will I learn?

Sociology is the study of society from a range of different perspectives. During this course you will look critically at different features of society such as family, education, beliefs and crime which will open your mind to new ideas and question your own experiences. There is no right and wrong in sociology, only different points of view.

You will learn to compare different ways of understanding society. You will also be encouraged to question the organisation of society and understand people's experiences in different social positions and groups. This will allow you to become more articulate and fluent in expressing your ideas and opinions.

Classes will include lively and stimulating sociological discussion and debates based on a variety of topical visual materials, news articles, interactive textbooks and more.

Unique opportunities

Almost everything that happens in society can be studied to develop an awareness of sociology outside the classroom. We encourage our students to watch TV shows, films, read books and online articles as part of their independent learning.

How am I assessed?

You will be assessed through three written examinations at the end of the second year. You will also be assessed throughout the course via essay writing and teacher assessments of your contributions to class discussion.

Is it suitable for you?

Sociology is an academically rigorous subject. To succeed, you will need to enjoy reading and writing, be prepared to question common sense understanding and have a keen interest in society and social issues.

What next?

This course can help you progress onto studying degree level courses at university in sociology or other subjects including politics, law, history, social work, education, social policy or criminology.

This subject can also help you to progress into a wide range of careers such as policing, law, teaching, the civil service, and social work.

A Level Textiles

Entry requirements

A minimum of a grade 4 must have been achieved in GCSE English Language. If an art-based GCSE has been taken, a minimum of a grade 5 must have been achieved. We will consider applicants with a suitable portfolio of evidence if the above has not been achieved.

What will I learn?

On this course you will develop your ability to think and work as a textile artist. Through exploring a range of activities and processes, you will consider how textiles can use visual language. You will have the opportunity to make wearable or non-wearable items, but the emphasis will always be on what you can communicate through the work you make.

Drawing is a key component of the course, using a range of materials, such as ink, collage and machine embroidery. You will learn practical skills in printing, dyeing, hand and machine stitching, fabric manipulation, weaving and felt and paper making. These skills will then allow you to interpret and express ideas.

There is a strong element of contextual research and analysis and you will be encouraged to research, analyse and respond to the work of other artists.

Unique opportunities

As part of the course, you will be encouraged to visit galleries and exhibitions both locally and nationally. You will also have chance to visit a city renowned for its artistic heritage. Recent destinations have included Berlin and New York.

At the end of each year, you will have the opportunity to showcase your work to the public at our annual Visual Arts Show.

How am I assessed?

You will be assessed through a range of practical work including creative experimentation contained in a sketchbook, finished pieces of coursework and a response to a theme set by the exam board.

You will also complete a written personal study investigating ideas in textiles.

Is it suitable for you?

This course is suitable for you if you have a good visual sense, inquisitive nature, good work ethic and an interest in cloth, colour and design. You will also need to be able to discuss your ideas and work.

To achieve the best grade possible, you will need to enjoy exploring a range of creative ideas and taking risks in your work.

What next?

Successful completion of this course can allow you to study a range of art and design related courses including Art Foundation and degree level courses in related subjects at college, art school or university.

This course can also assist you in your progression to a wide range of careers in art and design and other creative industries. Strong design based training will also allow you to develop a variety of valuable transferable skills including creative idea development, problem solving, contextual interpretation, visual communication, team working and presentation skills that can be applied to a number of other career options.

EPQ Extended Project Qualification

About EPQ

The EPQ is a one year course available to second year A Level students that is designed to help you become a skilled researcher by discovering information and evaluating its importance and credibility.

You will then apply these core research skills in producing either a 5,000 word report on a subject of your choice or produce an artefact such as a piece of artwork, music or video. If you choose to complete a practical project, you will need to produce a report of around 1,000 words and complete a detailed production log as you go to show how you carried out your project.

What will I learn?

The process of completing the EPQ will help you develop a variety of skills that will be essential in degree level studies and/or future employment. These skills include project management, searching and collecting information, evaluating information, data analysis, referencing and citation and report writing and presentation. You will also learn the importance of peer review process.

Unique opportunities

The exciting thing about the EPQ is that you can use it to explore anything you would like to investigate in more depth or to pursue a creative project.

Examples of previous EPQs include how to build a working electric guitar out of Lego, an investigation into how the cosmetic industry has detrimentally effected women's psychological wellbeing, and the history and key developments in the sport of snowboarding.

How am I assessed?

You will be assessed on your 5000 word report and a production log. If you are doing a practical project, you will be assessed on your artefact, 1,000 word report and production log.

Is it suitable for you?

You will enjoy the EPQ if you are interested in studying a particular topic of interest in more depth, can work independently and can organise your time effectively.

What next?

If you are looking to apply for a degree level course at university, college or art/drama school, the EPQ will give you extra UCAS points and demonstrate that you have developed valuable independent research skills.



City College Norwich Courses



**CITY
COLLEGE
NORWICH**

Take a look at the exciting options available to you at City College Norwich:

A Levels

Art
Biology
Business
Chemistry
Drama & Theatre Studies
English Language
English Language & Literature
English Literature
Environmental Science
Film Studies
Further Mathematics
Geography
History
Mathematics
Media Studies
Photography
Physics
Politics
Psychology
Religious Studies
(Philosophy & Ethics)
Sociology
Textiles

Apprenticeships

Accounting
Bricklaying
Business Administration
Carpentry and Joinery
Construction Management
Customer Service
Data Analyst
Dental Nurse
Early Years Educator
Electrical
Engineering
General Farm Worker
Hairdressing

Healthcare
Hospitality
Human Resources
IT
Land-Based Engineering
Management
Marketing
Motor Vehicle
Network Engineer
Plumbing
Property Maintenance
Teaching
Teaching Assistant

Art Foundation & Pre Degree

Pre-Degree Foundation Diplomas are designed to provide you with a broad range of skills and experiences prior to embarking on a university level degree:

Art Foundation & The Media
Learning Company

Business, Management & Administration

Business
Management & Administration

Childcare & Early Years

Assisting Teaching
Caring for Children
Early Years Educator
Early Years Practitioner
Education and Childcare
Education and Early Years

Construction & Building Services

Bricklaying
Carpentry and Joinery
Design, Surveying and Planning
Electrical
Plumbing

Creative Arts

Architecture and 3D Design
Art & Design
Creative Media Production &
Technology
Digital Art & Animation
Fashion Textiles
Fashion, Business and Retail
Fine Art
Games Design & Development
Graphic Design and Illustration
Photography

Engineering

Automotive and Engineering
Automotive Maintenance
Engineering
Light Vehicle Maintenance
and Repair
Maintenance, Installation
and Repair

ESOL (English for Speakers of Other Languages)

These qualifications are widely recognised by employers and assist with progression into further education, employment and everyday life.

Visit ccn.ac.uk/ESOL
to find out more.

Gcses for 16-18 year olds - Academic Progression

Specifically designed to help you progress on to the next stage of your education and are split into pathways appropriate to your next steps:

Academic Progression 3-4 GCSE Programme

Academic Progression Insight

Visit ccn.ac.uk/gcse to find out more.

Hairdressing, Beauty Therapy & Make Up Artistry

Barbering

Beauty Therapy

Hairdressing

Media Make Up Artistry

Theatrical, Special Effects & Media Make Up Artistry

Health & Social Care

Health and Science

Health and Social Care

Supporting Healthcare - Adult

Nursing

Supporting Healthcare -

Supporting Mental Health

Hospitality & Catering

Cookery

Hospitality and Catering

Professional Cookery

Inclusive Learning

These courses help you to progress to your next steps through our bespoke small group programmes.

Visit: ccn.ac.uk/inclusive-learning to find out more.

Information Technology & Computing

Digital

Digital Production, Design and Development

Digital Support Services Infrastructure

Performing Arts & Production

Acting for Stage and Screen

Dance

Media, Broadcast and

Production

Music Performance and

Production

Musical Theatre

Science

Our Science courses are available at Easton College.

Sport & Outdoor Leadership

Our Sport and Outdoor Leadership courses are available at Easton College.

Travel & Tourism

Travel & Tourism

Uniformed Services

Our Uniformed Services courses are available at Easton College.

Discuss your options with our friendly Advice Shop

Our advisers offer free advice and guidance to help you make the right choice.

Contact our advisers in the Advice Shop on **01603 773 773** or information@ccn.ac.uk



Paston College Courses



Paston College has a strong history of high achievement which sees students progress on to university, employment and apprenticeships. We offer expert teaching, guidance and support to help ensure you achieve your aspirations.

Take a look at the exciting options available and choose the right course for you!

A Level programmes

Art & Design - Fine Art
Biology
Business
Chemistry
Drama & Theatre Studies
English Language & Literature
English Literature
Environmental Science
Film Studies
French
Further Mathematics
Geography
Graphic Communication
History
History of Art
Law
Mathematics
Media Studies
Philosophy, Religion & Ethics
Photography
Physical Education
Physics
Politics
Psychology
Sociology
Textile Design

Career focused courses

Level 2 Media Production
Level 2 Vocational Studies
Level 3 Art and Design
Level 3 Computing
Level 3 Creative Media Production
Level 3 Criminology
Level 3 Health and Social Care
Level 3 Sport & Exercise Science

Inclusive Learning

Multi Enterprise
Ticket Paston

T Level

Business
Education & Early Years
Management and Administration:
Team Leadership and Management

Discuss your options with our friendly Advice Shop

Our advisers offer free
advice and guidance to
help you make the
right choice.

Contact our advisers in
the Advice Shop at Paston
College on 01692 668 080
or pastoninfo@ccn.ac.uk





Easton College Courses



Take a look at the exciting options available to you at Easton College:

Access to Higher Education

Criminal Justice & Policing
Land Based Studies

Agriculture

Agriculture
Land Based Studies

Agricultural Engineering

Land Based Technology

Animal Studies

Animal Care
Animal Management
Animal Nursing
Animal Science
Land Based Studies (Animal)

Forestry & Arboriculture

Tree and Woodland Management
and Maintenance - Arboriculture

Construction

Construction Multi Skills

Degrees & Higher Education

Animal Science
Professional Policing

Sport, Health and Exercise Science
Wildlife and Conservation
Zoology

Environmental Conservation & Countryside Management

Environmental Conservation and
Countryside Management
Land and Wildlife Management

Equine Studies

Equine Care
Equine Management
Work-based Horse Care

Floristry

Floristry

Horticulture

Horticulture

Inclusive Learning

These courses help you to
progress to your next steps
through our bespoke small
group programmes delivered
by a team of dedicated staff.

Visit: [easton.ac.uk
/inclusive-learning](http://easton.ac.uk/inclusive-learning)
to find out more.

Outdoor Leadership

Outdoor Leadership

Sciences

Laboratory Science

Sport

Fitness Services
Performance and Excellence
Sport
Sport and Exercise Science
Sport Coaching and
Development

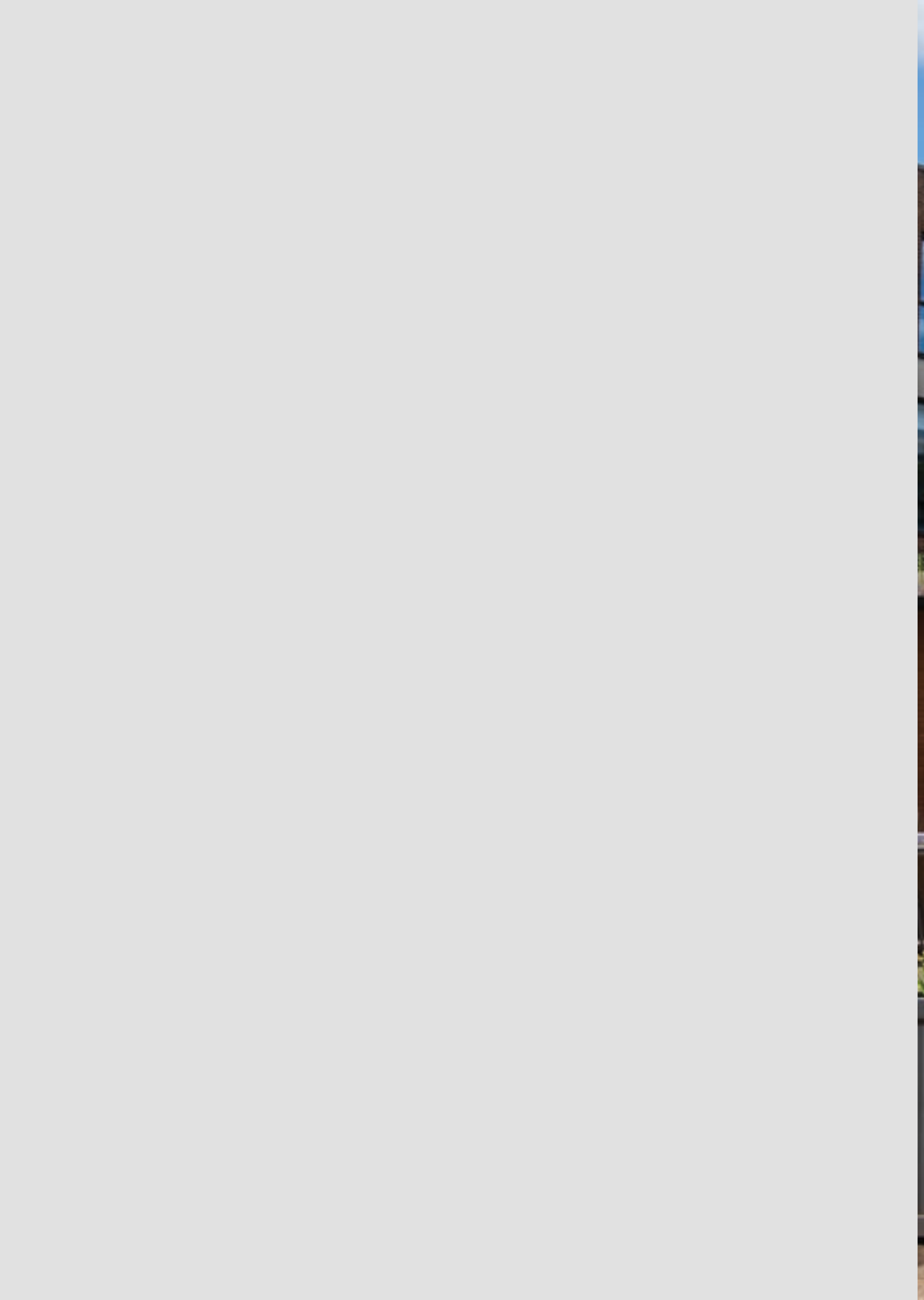
Uniformed Services

Uniformed Public Services

Apprenticeships

Bricklaying
Carpentry and Joinery
General Farm Worker
Land-Based Service Engineering
Livestock Technician
Property Maintenance







Easton College Open Events

11 October 2024 - 5pm - 7:30pm

12 October 2024 - 10am - 1pm

28 June 2025 - 10am - 1pm

City College Norwich Open Events

4 October 2024 - 5pm - 7:30pm

5 October 2024 - 10am - 1pm

25 January 2025 - A Level Taster Day

21 June 2025 - 10am - 1pm

2 July 2025 - A Level Taster Day

Paston College Open Events

26 September 2024 - 4:30pm - 7pm

9 November 2024 - 10am - 1pm

19 June 2025 - 4:30pm - 7pm

Contact us

City College Norwich Sixth Form

City College Norwich

Ipswich Road

Norwich

NR2 2LJ

t: +44 (0)1603 773 311

e: information@ccn.ac.uk

www.ccn.ac.uk/a-levels

Find us on social media



@norwichcollege



@citycollegenorwich



citycollegenorwich